

Goat anti-Chicken IgY (H+L) Cross-Adsorbed Secondary Antibody, Alexa Fluor™ Plus 647

Product Details	
Size	1 mg
Species Reactivity	Chicken
Host/Isotype	Goat / IgG
Class	Polyclonal
Type	Secondary Antibody
Conjugate	Alexa Fluor™ Plus 647
Excitation/Emission Max	658/675 nm
Immunogen	Purified Chicken IgY, Heavy and Light chains
Form	Liquid
Concentration	2 mg/mL
Purification	Affinity chromatography
Storage buffer	proprietary buffer, pH 6.5
Contains	0.016% Methylisothiazolone, 0.016% Bromonitrodioxane
Storage conditions	4° C, store in dark
RRID	AB_2762845

Applications	Tested Dilution	Publications
Western Blot (WB)	0.1-0.4 µg/mL	-
Immunocytochemistry (ICC/IF)	1-10 µg/mL	-

Product Specific Information

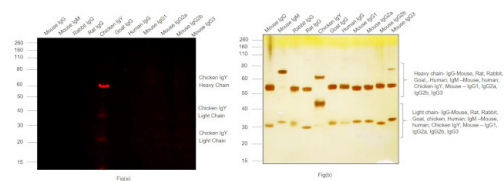
To minimize cross-reactivity, the goat anti-chicken IgY whole antibodies have been affinity-purified and cross-adsorbed against chicken serum containing non-immunoglobulin chicken serum proteins. Cross-adsorption or pre-adsorption is a purification step to increase specificity of the antibody resulting in higher sensitivity and less background staining. The secondary antibody solution is passed through a column matrix containing immobilized serum proteins from potentially cross-reactive species. Only the nonspecific-binding secondary antibodies are captured in the column, and the highly specific secondaries flow through. The benefits of this extra step are apparent in multiplexing/multicolor-staining experiments (e.g., flow cytometry) where there is potential cross-reactivity with other primary antibodies or in tissue/cell fluorescent staining experiments where there may be the presence of endogenous immunoglobulins.^{^M}

^{^M}

Using conjugate solutions: Centrifuge the protein conjugate solution briefly in a microcentrifuge before use; add only the supernatant to the experiment. This step will help eliminate any protein aggregates that may have formed during storage, thereby reducing nonspecific background staining. Because staining protocols vary with application, the appropriate dilution of antibody should be determined empirically.^{^M}

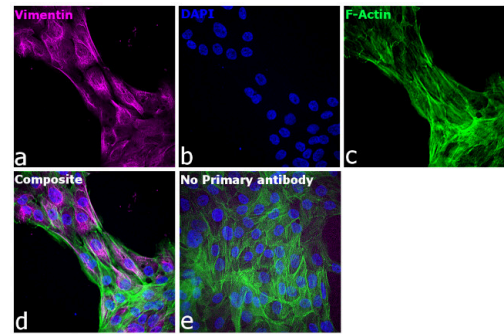
^{^M}

Specificity: This antibody binds to heavy chains on chicken IgY and light chains on all chicken immunoglobulins. This antibody does not bind non-immunoglobulin chicken serum proteins.



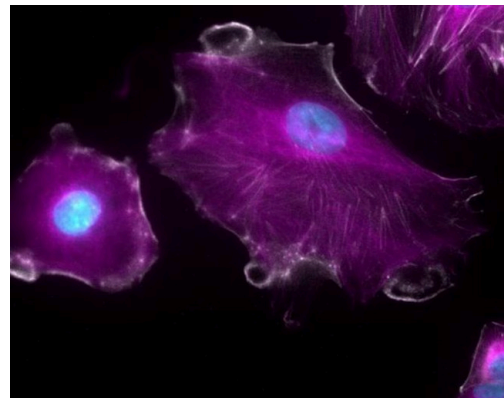
Chicken IgY (H+L) Cross-Adsorbed Secondary Antibody (A32933)

Specificity of secondary antibody was demonstrated by specific detection of the target immunoglobulin. Antibody specificity was demonstrated by specific detection of Chicken IgY. Protein bands at ~68, 42 and 22 kDa corresponding to Chicken IgY Heavy and Light Chains were observed in Chicken IgY but not in other species using Goat anti-Chicken IgY (H+L) Cross-Adsorbed Secondary Antibody, Alexa Fluor Plus 647 (Product # A32933) in Western Blot. Relative expression. {RE}



Chicken IgY (H+L) Cross-Adsorbed Secondary Antibody (A32933) in ICC/IF

Immunofluorescence analysis of Goat anti-Chicken IgY (H+L) Cross-Adsorbed Secondary Antibody, Alexa Fluor Plus 647 (Product # A32933) was performed using MCF10A cells stained with Vimentin Polyclonal Antibody (Product # PA1-10003). The cells were fixed with 4% paraformaldehyde for 10 minutes, permeabilized with 0.1% Triton™ X-100 for 10 minutes, blocked with 2% BSA for 1 hour and labeled with primary antibody (1:200 dilution in 0.1% BSA) for 3 hours at room temperature. Goat anti-Chicken IgY (H+L) Cross-Adsorbed Secondary Antibody, Alexa Fluor Plus 647 (Product # A32933, 1:2000 dilution) in 0.1% BSA in PBS for 45 minutes at room temperature, was used for detection of Vimentin in the cytoplasm (Panel a: purple). Nuclei (Panel b: blue) were stained with Hoechst33342 (Product # H1399). Alexa Fluor™ 488 Phalloidin (Product # A12379, 1:300) (Panel c: green). Panel d represents the composite image. Nonspecific staining was not observed with secondary antibody alone (panel e). The images were captured at 60X magnification.



Chicken IgY (H+L) Cross-Adsorbed Secondary Antibody (A32933) in ICC/IF

Immunofluorescent analysis of tubulin in A549 cells. The cells were fixed with 4% formaldehyde for 20 mins, permeabilized with 0.5% Triton X-100 in PBS for 20 mins, washed 3X in PBS and blocked with 3% BSA in PBS for 30 mins at RT. Cells were stained with a tubulin antibody at a dilution of 1:500 in 3% BSA in PBS over night at 4C, washed 3X in PBS and then incubated with Invitrogen Alexa Fluor Plus 647 goat anti-chicken IgY secondary antibody (Product # A32933) prepared in 3% BSA in PBS at a dilution of 1:500 for 1 hr at RT in the presence of NucBlue Live ReadyProbes Reagent (Product # R37605). The image contains overlay of tubulin (purple) and nuclei (blue). Images were taken on an EVOS FL Auto 2 Imaging System (Product # AMAFD2000) with an Olympus 40X Super Apochromat objective (Product # AMEP4754) at 40X magnification. Actin was stained using Alexa Fluor Plus Phalloidin (Product # A30105).

View more figures on thermofisher.cn

80 References

Maternal high-fat diet programs offspring airway hyperinnervation and hyperresponsiveness. JCI Insight (2025)

YAP-driven malignant reprogramming of oral epithelial stem cells at single cell resolution. Nat Commun (2025)

CCR2 restricts IFN- production by hippocampal CD8 TRM cells that impair learning and memory during recovery from WNV encephalitis. J Neuroinflammation (2024)

Knockout of the V-ATPase interacting protein Tldc2 in B-type kidney intercalated cells impairs urine alkalinization bioRxiv (2024)

Sensory neuron LKB1 mediates ovarian and reproductive function. Sci Rep (2024)

For Research Use Only. Not for use in diagnostic procedures. Not for resale without express authorization. Products are warranted to operate or perform substantially in conformance with published Product specifications in effect at the time of sale, as set forth in the Production documentation, specifications and/or accompanying package inserts ("Documentation"). No claim of suitability for use in applications regulated by FDA is made. The warranty provided herein is valid only when used by properly trained individuals. Unless otherwise stated in the Documentation, this warranty is limited to one year from date of shipment when the Product is subjected to normal, proper and intended usage. This warranty does not extend to anyone other than the Buyer. Any model or sample furnished to Buyer is merely illustrative of the general type and quality of goods and does not represent that any Product will conform to such model or sample. NO OTHER WARRANTIES, EXPRESS OR IMPLIED, ARE GRANTED INCLUDING WITHOUT LIMITATION, IMPLIED WARRANTIES OF MERCHANTABILITY, FITNESS FOR ANY PARTICULAR PURPOSE, OR NON-INFRINGEMENT. BUYER'S EXCLUSIVE REMEDY FOR NON-CONFORMING PRODUCTS DURING THE WARRANTY PERIOD IS LIMITED TO REPAIR, REPLACEMENT OF OR REFUND FOR THE NON-CONFORMING PRODUCT(S) AT SELLER'S SOLE OPTION. THERE IS NO OBLIGATION TO REPAIR, REPLACE OR REFUND FOR PRODUCTS AS THE RESULT OF (I) ACCIDENT, DISASTER OR EVENT OF FORCE MAJEURE, (II) MISUSE, FAULT OR NEGLIGENCE OF OR BY BUYER, (III) USE OF THE PRODUCTS IN A MANNER FOR WHICH THEY WERE NOT DESIGNED, OR (IV) IMPROPER STORAGE AND HANDLING OF THE PRODUCTS. Unless otherwise expressly stated on the Product or in the documentation accompanying the Product, the Product is intended for research only and is not to be used for any other purpose, including without limitation, unauthorized commercial uses, in vitro diagnostic uses, ex vivo or in vivo therapeutic uses, or any type of consumption by or application to human or animals.