

Goat anti-Mouse IgG (H+L) Highly Cross-Adsorbed Secondary Antibody, HRP

Product Details	
Size	1 mg
Species Reactivity	Mouse
Host/Isotype	Goat / IgG
Class	Polyclonal
Type	Secondary Antibody
Conjugate	HRP
Immunogen	Gamma Immunoglobins Heavy and Light chains
Form	Lyophilized
Concentration	2.5 mg/mL
Purification	Affinity chromatography
Storage buffer	PBS, pH 7.2, with 1% BSA
Contains	0.1% ProClin 150
Storage conditions	Store at 4°C short term. For long term storage, store at -20°C, avoiding freeze/thaw cycles.
RRID	AB_2534751

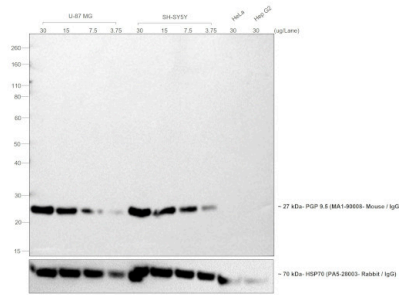
Applications	Tested Dilution	Publications
Western Blot (WB)	1:10,000-1:200,000	0 Publication
Immunohistochemistry (IHC)	1:500-1:20,000	-
ELISA (ELISA)	1:500-1:20,000	-

Product Specific Information

Rehydrate with 1.1 mL of deionized water and let stand 30 minutes at room temperature to dissolve. (Product has been overfilled to ensure complete recovery.) Centrifuge to remove any particulates. Prepare fresh working dilution daily. Store lyophilized material at 2-8 °C. For long term storage after reconstitution, dilute with 50% glycerol and store at -20 °C as a liquid. Based on Immunoelectrophoresis, no reactivity is observed to: non-immunoglobulin mouse serum proteins, bovine, goat, human, rabbit or rat IgG.

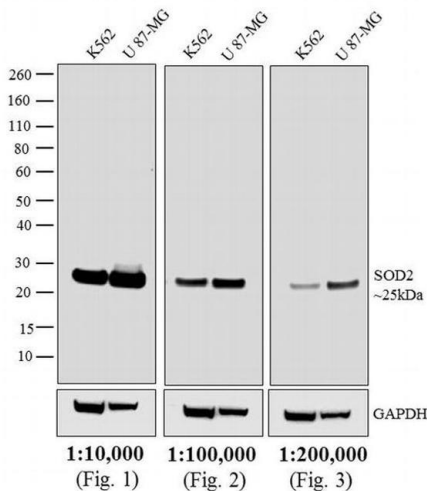
Product Images For Goat anti-Mouse IgG (H+L) Highly Cross-Adsorbed Secondary Antibody, HRP

Mouse IgG (H+L) Highly Cross-Adsorbed Secondary Antibody (A16078) in WB



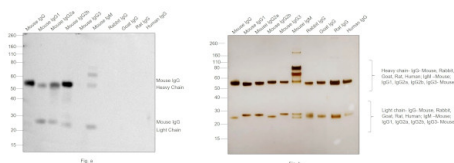
Chemiluminescent western blot was performed using Goat anti-Mouse IgG (H+L) Highly Cross-Adsorbed Secondary Antibody, HRP (Product # A16078). Whole cell extracts of U-87 MG (Lane 1, 2, 3, 4), SH-SY5Y (Lane 5, 6, 7, 8), HeLa (Lane 9), Hep G2 (Lane 10) were electrophoresed using NuPAGE™ 4-12% Bis-Tris Protein Gel (Product # NP0322BOX). Resolved proteins were transferred onto a nitrocellulose membrane (Product # IB23001) by iBlot® 2 Dry Blotting System (Product # IB21001). The blot was probed with PGP9.5 Monoclonal Antibody (13C4) (Product # MA1-90008). Secondary antibody (Product # A16078, 1:50,000) was used for detection of PGP9.5 by chemiluminescence with SuperSignal™ West Pico PLUS Chemiluminescent Substrate (Product # 34580) using the iBright™ FL1500 (Product # A44115). Goat anti-Mouse IgG (H+L) Highly Cross-Adsorbed Secondary Antibody, HRP (Product # A16078) specifically detects the PGP9.5 mouse primary antibody.

Mouse IgG (H+L) Highly Cross-Adsorbed Secondary Antibody (A16078) in WB



Western blot analysis was performed on whole cell extracts (30 µg lysate) of K-562 (Lane 1) and U-87 MG (Lane 2). The blots were probed with Anti-SOD2 Mouse Monoclonal Antibody (Product # MA1-106, 0.25 µg/mL) and detected by chemiluminescence using Goat anti-Mouse IgG (H+L) Highly Cross-Adsorbed Secondary Antibody, HRP (Product # A16078) at dilutions 1:10,000 (Fig. 1), 1:100,000 (Fig. 2) and 1:200,000 (Fig. 3). A 25 kDa band corresponding to SOD2 was observed. Known quantity of protein samples were electrophoresed using Novex® NuPAGE®12 % Bis-Tris gel (Product # NP0342BOX), XCell SureLock™ Electrophoresis System (Product # EI0002) and Novex® Sharp Pre-Stained Protein Standard (Product # LC5800). Resolved proteins were then transferred onto a nitrocellulose membrane with iBlot® 2 Dry Blotting System (Product # IB21001). The membrane was probed with the relevant primary and secondary antibody after blocking with 5 % skimmed milk. Chemiluminescent detection was performed using Pierce™ ECL Western Blotting Substrate (Product # 32106).

Mouse IgG (H+L) Highly Cross-Adsorbed Secondary Antibody (A16078) in WB



Western blot was performed using Goat anti-Mouse IgG (H+L) Highly Cross-Adsorbed Secondary Antibody, HRP (Product # A16078) and ~55 kDa, 25 kDa bands corresponding to Mouse IgG Heavy Chain and Light Chain were observed in Mouse IgG, Mouse IgG1, Mouse IgG2a, Mouse IgG2b, Mouse IgM but not in Mouse IgG3, Rabbit IgG, Goat IgG, Rat IgG and Human IgG. Purified protein (100 ng) of Mouse IgG (Lane 1), Mouse IgG1 (Lane 2), Mouse IgG2a (Lane 3), Mouse IgG2b (Lane 4), Mouse IgG3 (Lane 5), Mouse IgM (Lane 6), Rabbit IgG (Lane 7), Goat IgG (Lane 8), Rat IgG (Lane 9), Human IgG (Lane 10) (Fig. a) were electrophoresed using NuPAGE™ 4-12% Bis-Tris Protein Gel (Product # NP0321BOX). Resolved proteins were then transferred onto a nitrocellulose membrane (Product # IB23001) by iBlot® 2 Dry Blotting System (Product # IB21001). The blot was probed with Goat anti-Mouse IgG (H+L) Highly Cross-Adsorbed Secondary Antibody, HRP (Product # A16078, 1:10,000) and detected using the iBright™ FL1500 (Product # A44115). Silver staining was performed to establish equivalent loading of purified proteins using the Pierce™ Silver Stain Kit (Product # 24612) (Fig. b). This antibody shows cross-reactivity with Mouse IgM.

View more figures on thermofisher.cn

74 References

Lack of dominant-negative activity for tumor-related ZNRF3 missense mutations at endogenous levels. *Oncogene* (2024)

Interpretable machine learning uncovers epithelial transcriptional rewiring and a role for Gelsolin in COPD. *JCI Insight* (2024)

A high-throughput Cyclin D-CDK4 NanoBiT assay facilitates identification and characterisation of antisense oligonucleotide-based CDK4 inhibitors *Research Square* (2024)

Global profiling of protein complex dynamics with an experimental library of protein interaction markers. *Nat Biotechnol* (2024)

The RNA-binding protein EIF4A3 promotes axon development by direct control of the cytoskeleton. *Cell Rep* (2024)

For Research Use Only. Not for use in diagnostic procedures. Not for resale without express authorization. Products are warranted to operate or perform substantially in conformance with published Product specifications in effect at the time of sale, as set forth in the Production documentation, specifications and/or accompanying package inserts ("Documentation"). No claim of suitability for use in applications regulated by FDA is made. The warranty provided herein is valid only when used by properly trained individuals. Unless otherwise stated in the Documentation, this warranty is limited to one year from date of shipment when the Product is subjected to normal, proper and intended usage. This warranty does not extend to anyone other than the Buyer. Any model or sample furnished to Buyer is merely illustrative of the general type and quality of goods and does not represent that any Product will conform to such model or sample. NO OTHER WARRANTIES, EXPRESS OR IMPLIED, ARE GRANTED INCLUDING WITHOUT LIMITATION, IMPLIED WARRANTIES OF MERCHANTABILITY, FITNESS FOR ANY PARTICULAR PURPOSE, OR NON INFRINGEMENT. BUYER'S EXCLUSIVE REMEDY FOR NON-CONFORMING PRODUCTS DURING THE WARRANTY PERIOD IS LIMITED TO REPAIR, REPLACEMENT OF OR REFUND FOR THE NON-CONFORMING PRODUCT(S) AT SELLER'S SOLE OPTION. THERE IS NO OBLIGATION TO REPAIR, REPLACE OR REFUND FOR PRODUCTS AS THE RESULT OF (I) ACCIDENT, DISASTER OR EVENT OF FORCE MAJEURE, (II) MISUSE, FAULT OR NEGLIGENCE OF OR BY BUYER, (III) USE OF THE PRODUCTS IN A MANNER FOR WHICH THEY WERE NOT DESIGNED, OR (IV) IMPROPER STORAGE AND HANDLING OF THE PRODUCTS. Unless otherwise expressly stated on the Product or in the documentation accompanying the Product, the Product is intended for research only and is not to be used for any other purpose, including without limitation, unauthorized commercial uses, in vitro diagnostic uses, ex vivo or in vivo therapeutic uses, or any type of consumption by or application to human or animals.