

Donkey anti-Goat IgG (H+L) Highly Cross-Adsorbed Secondary Antibody, Alexa Fluor™ Plus 647

Product Details	
Size	1 mg
Species Reactivity	Goat
Host/Isotype	Donkey / IgG
Class	Polyclonal
Type	Secondary Antibody
Conjugate	Alexa Fluor™ Plus 647
Excitation/Emission Max	658/675 nm
Immunogen	Gamma Immunoglobins Heavy and Light chains
Form	Liquid
Concentration	2 mg/mL
Purification	Affinity chromatography
Storage buffer	proprietary buffer, pH 6.5
Contains	0.016% Methylisothiazolone, 0.016% Bromonitrodioxane
Storage conditions	4° C, store in dark
RRID	AB_2762840

Applications	Tested Dilution	Publications
Western Blot (WB)	0.1-0.4 µg/mL	-
Immunocytochemistry (ICC/IF)	1-10 µg/mL	0 Publication
Miscellaneous PubMed (Misc)	-	0 Publication

Product Specific Information

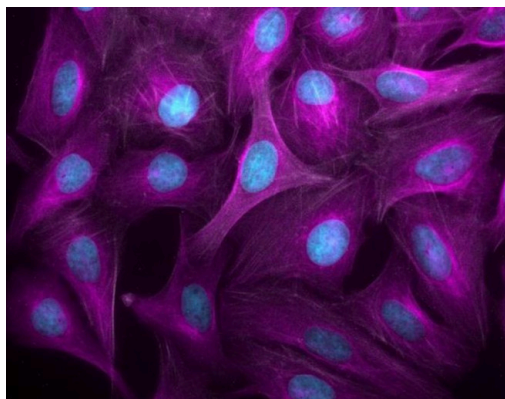
To minimize cross-reactivity, the donkey anti-goat IgG whole antibodies have been cross-adsorbed against IgG from human, mouse, rabbit, and rat, as well as non-immunoglobulin goat serum. Cross-adsorption or pre-adsorption is a purification step to increase specificity of the antibody resulting in less background staining and cross-reactivity. The secondary antibody solution is passed through a column matrix containing immobilized serum proteins from potentially cross-reactive species. Only the nonspecific-binding secondary antibodies are captured in the column, and the highly specific secondaries flow through. Further passages through additional columns result in highly cross-adsorbed preparations of secondary antibody. The benefits of these extra steps are apparent in multiplexing/multicolor-staining experiments where there is potential cross-reactivity with other primary antibodies or in tissue/cell fluorescent staining experiments where there may be the presence of endogenous immunoglobulins.^{^M}

^{^M}

Using conjugate solutions: Centrifuge the protein conjugate solution briefly in a microcentrifuge before use; add only the supernatant to the experiment. This step will help eliminate any protein aggregates that may have formed during storage, thereby reducing nonspecific background staining. Because staining protocols vary with application, the appropriate dilution of antibody should be determined empirically.^{^M}

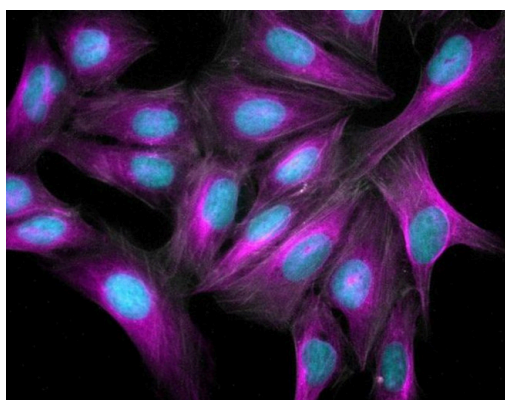
^{^M}

Specificity: This antibody binds to heavy chains on goat IgG and light chains on all goat immunoglobulins. This antibody does not bind non-immunoglobulin goat serum proteins or IgG from human, mouse, rabbit or rat.



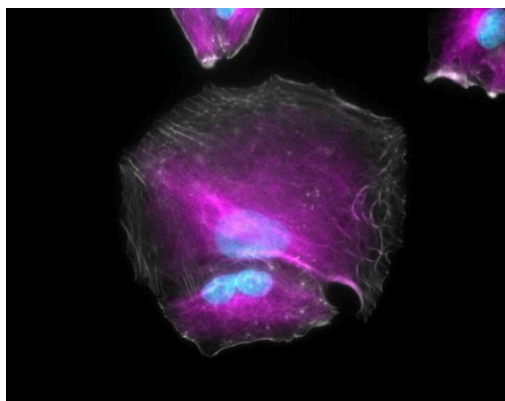
Goat IgG (H+L) Highly Cross-Adsorbed Secondary Antibody (A32849) in ICC /IF

Immunofluorescent analysis of tubulin in U2OS cells. The cells were fixed with 4% formaldehyde for 20 mins, permeabilized with 0.5% Triton X-100 in PBS for 20 mins, washed 3X in PBS and blocked with 3% BSA in PBS for 30 mins at RT. Cells were stained with a tubulin antibody at a dilution of 1:500 in 3% BSA in PBS over night at 4C, washed 3X in PBS and then incubated with Invitrogen Alexa Fluor Plus 647 donkey anti-goat IgG secondary antibody (Product # A32849) prepared in 3% BSA in PBS at a dilution of 1:500 for 1 hr at RT in the presence of NucBlue Live ReadyProbes Reagent (Product # R37605). The image contains overlay of tubulin (purple) and nuclei (blue). Images were taken on an EVOS FL Auto 2 Imaging System (Product # AMAFD2000) with an Olympus 40X Super Apochromat objective (Product # AMEP4754) at 40X magnification. Actin was stained using Alexa Fluor Plus Phalloidin (Product # A30105).



Goat IgG (H+L) Highly Cross-Adsorbed Secondary Antibody (A32849) in ICC /IF

Immunofluorescent analysis of tubulin in U2OS cells. The cells were fixed with 4% formaldehyde for 20 mins, permeabilized with 0.5% Triton X-100 in PBS for 20 mins, washed 3X in PBS and blocked with 3% BSA in PBS for 30 mins at RT. Cells were stained with a tubulin antibody at a dilution of 1:500 in 3% BSA in PBS over night at 4C, washed 3X in PBS and then incubated with Invitrogen Alexa Fluor Plus 647 donkey anti-goat IgG secondary antibody (Product # A32849) prepared in 3% BSA in PBS at a dilution of 1:500 for 1 hr at RT in the presence of NucBlue Live ReadyProbes Reagent (Product # R37605). The image contains overlay of tubulin (purple) and nuclei (blue). Images were taken on an EVOS FL Auto 2 Imaging System (Product # AMAFD2000) with an Olympus 40X Super Apochromat objective (Product # AMEP4754) at 40X magnification. Actin was stained using Alexa Fluor Plus Phalloidin (Product # A30105).



Goat IgG (H+L) Highly Cross-Adsorbed Secondary Antibody (A32849) in ICC /IF

Immunofluorescent analysis of tubulin in A549 cells. The cells were fixed with 4% formaldehyde for 20 mins, permeabilized with 0.5% Triton X-100 in PBS for 20 mins, washed 3X in PBS and blocked with 3% BSA in PBS for 30 mins at RT. Cells were stained with a tubulin antibody at a dilution of 1:500 in 3% BSA in PBS over night at 4C, washed 3X in PBS and then incubated with Invitrogen Alexa Fluor Plus 647 donkey anti-goat IgG secondary antibody (Product # A32849) prepared in 3% BSA in PBS at a dilution of 1:500 for 1 hr at RT in the presence of NucBlue Live ReadyProbes Reagent (Product # R37605). The image contains overlay of tubulin (purple) and nuclei (blue). Images were taken on an EVOS FL Auto 2 Imaging System (Product # AMAFD2000) with an Olympus 40X Super Apochromat objective (Product # AMEP4754) at 40X magnification. Actin was stained using Alexa Fluor Plus Phalloidin (Product # A30105).

View more figures on thermofisher.cn

Generation of a genetically engineered porcine melanoma model featuring oncogenic control through conditional Cre recombination. Sci Rep (2025)

PTPN1/2 inhibition promotes muscle stem cell differentiation in Duchenne muscular dystrophy. Life Sci Alliance (2025)

Airway-derived emphysema-specific alveolar type II cells exhibit impaired regenerative potential in COPD. Eur Respir J (2024)

Suppression of dystroglycan function accompanies pancreatic acinar-to-ductal metaplasia and favours dysplasia development. J Pathol (2024)

Specialized post-arterial capillaries facilitate adult bone remodelling. Nat Cell Biol (2024)

For Research Use Only. Not for use in diagnostic procedures. Not for resale without express authorization. Products are warranted to operate or perform substantially in conformance with published Product specifications in effect at the time of sale, as set forth in the Production documentation, specifications and/or accompanying package inserts ("Documentation"). No claim of suitability for use in applications regulated by FDA is made. The warranty provided herein is valid only when used by properly trained individuals. Unless otherwise stated in the Documentation, this warranty is limited to one year from date of shipment when the Product is subjected to normal, proper and intended usage. This warranty does not extend to anyone other than the Buyer. Any model or sample furnished to Buyer is merely illustrative of the general type and quality of goods and does not represent that any Product will conform to such model or sample. NO OTHER WARRANTIES, EXPRESS OR IMPLIED, ARE GRANTED INCLUDING WITHOUT LIMITATION, IMPLIED WARRANTIES OF MERCHANTABILITY, FITNESS FOR ANY PARTICULAR PURPOSE, OR NON INFRINGEMENT. BUYER'S EXCLUSIVE REMEDY FOR NON-CONFORMING PRODUCTS DURING THE WARRANTY PERIOD IS LIMITED TO REPAIR, REPLACEMENT OF OR REFUND FOR THE NON-CONFORMING PRODUCT(S) AT SELLER'S SOLE OPTION. THERE IS NO OBLIGATION TO REPAIR, REPLACE OR REFUND FOR PRODUCTS AS THE RESULT OF (I) ACCIDENT, DISASTER OR EVENT OF FORCE MAJEURE, (II) MISUSE, FAULT OR NEGLIGENCE OF OR BY BUYER, (III) USE OF THE PRODUCTS IN A MANNER FOR WHICH THEY WERE NOT DESIGNED, OR (IV) IMPROPER STORAGE AND HANDLING OF THE PRODUCTS. Unless otherwise expressly stated on the Product or in the documentation accompanying the Product, the Product is intended for research only and is not to be used for any other purpose, including without limitation, unauthorized commercial uses, in vitro diagnostic uses, ex vivo or in vivo therapeutic uses, or any type of consumption by or application to human or animals.