

Goat anti-Rabbit IgG (H+L) Cross-Adsorbed Secondary Antibody, HRP

Product Details	
Size	1 mg
Species Reactivity	Rabbit
Host/Isotype	Goat / IgG
Class	Polyclonal
Type	Secondary Antibody
Conjugate	HRP
Immunogen	Purified Rabbit IgG, whole molecule
Form	Lyophilized
Concentration	2.5 mg/mL
Purification	Affinity chromatography
Storage buffer	PBS, pH 7.2, with 1% BSA
Contains	0.1% ProClin 150
Storage conditions	Store at 4°C short term. For long term storage, store at -20°C, avoiding freeze/thaw cycles.
RRID	AB_2534776

Applications	Tested Dilution	Publications
Western Blot (WB)	1:500-1:20,000	0 Publication
Immunohistochemistry (IHC)	1:500-1:20,000	-
ELISA (ELISA)	1:500-1:20,000	-
Miscellaneous PubMed (Misc)	-	0 Publication

Product Specific Information

Rehydrate with 1.1 mL of deionized water and let stand 30 minutes at room temperature to dissolve. (Product has been overfilled to ensure complete recovery.) Centrifuge to remove any particulates. Prepare fresh working dilution daily. Store lyophilized material at 2-8 °C. For long term storage after reconstitution, dilute with 50% glycerol and store at -20 °C as a liquid.

^M

^M

Based on Immunoelectrophoresis, no reactivity is observed to: non-immunoglobulin rabbit serum proteins, serum proteins from bovine, human, or mouse , IgG from human or mouse.^M

^M

Based on IEP, this antibody reacts with: heavy (gamma) chains on rabbit IgG; light chains on all rabbit immunoglobulins.^M

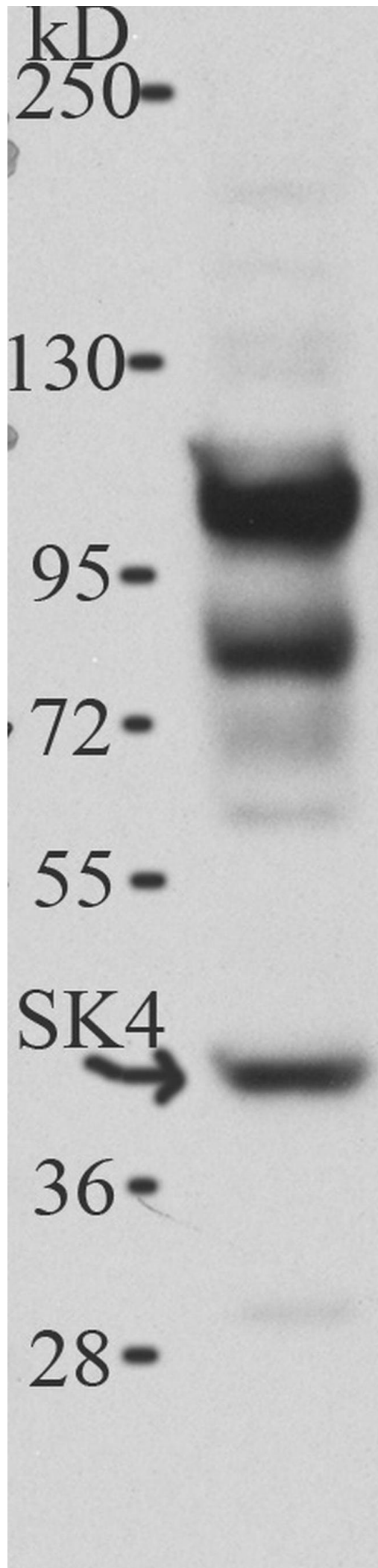
^M

Affinity purified antibody is > 95% based on SDS-PAGE.

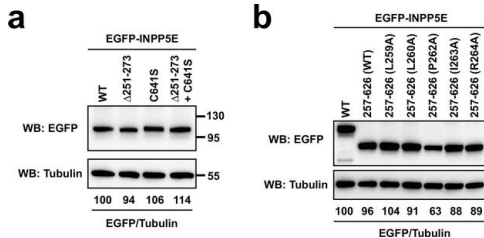
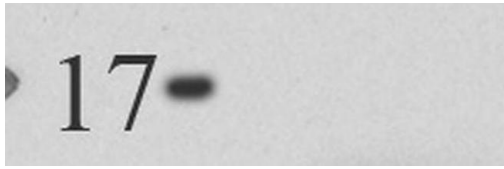
Product Images For Goat anti-Rabbit IgG (H+L) Cross-Adsorbed Secondary Antibody, HRP

Rabbit IgG (H+L) Cross-Adsorbed Secondary Antibody (A16104) in WB

Western blot analysis of KCNN4/KCa3.1/SK4 was performed by loading whole cell lysates from mouse kidney mCCDcl1 cells onto a 4-20% Tris-Glycine polyacrylamide gel. Proteins were transferred to PVDF membrane using the G2 Fast Blotter (Product # 62288) and blocked with 3% non-fat milk for at least 1



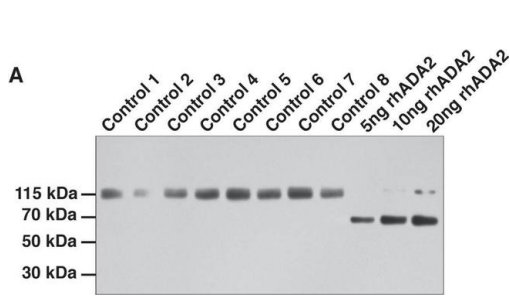
hour at room temperature. SK4 was detected using a SK4 polyclonal antibody (Product # PA5-33875) at a dilution of 1:2000 in blocking buffer overnight at 4°C on a rocking platform, followed by a goat anti-rabbit IgG-HRP secondary antibody (Product # A16104) at a dilution of 1:2,000 for at least 1 hour at room temperature. Chemiluminescent detection was performed using SuperSignal West Pico (Product # 34078) and the myECL Imager (Product # 62236). Note: Data courtesy of our Innovators Program.



Rabbit IgG (H+L) Cross-Adsorbed Secondary Antibody (A16104) in WB

Expression levels of EGFP-INPP5E constructs from Figure 3.(a) Constructs from Figure 3a-c were expressed in HEK293T cells. Lysates were analyzed by SDS-PAGE and immunoblotting with the indicated antibodies. Molecular weight markers in kilodaltons are shown on the right. The numbers under the tubulin blots are EGFP/Tubulin band intensity ratios, normalized so that WT equals 100%. (b) Same was done for the indicated constructs from Figure 3d-g. Figure 3-figure supplement 2-source data 1. Uncropped immunoblots from Figure 3-figure supplement 2. Relevant bands are inside rectangles. See Figure 3-figure supplement 2 for more details. Figure 3-figure supplement 2-source data 2. Uncropped immunoblot from Figure 3-figure supplement 2 (WB: EGFP). Figure 3-figure supplement 2-source data 3. Uncropped immunoblot from Figure 3-figure supplement 2 (WB: Tubulin). Figure 3-figure supplement 2-source data 4. Uncropped immunoblot from Figure 3-figure supplement 2 (WB: EGFP). Figure 3-figure supplement 2-source data 5. Uncropped immunoblot from Figure 3-figure supplement 2 (WB: Tubulin). Uncropped immunoblots from Figure 3-figure supplement 2. Relevant bands are inside rectangles. See Figure 3-figure supplement 2 for more details. Uncropped immunoblot from Figure 3-figure supplement 2 (WB: EGFP). Uncropped immunoblot from Figure 3-figure supplement 2 (WB: Tubulin). Uncropped immunoblot from Figure 3-figure supplement 2 (WB: EGFP). Uncropped immunoblot from F...

Image collected and cropped by CiteAb from the following publication (<https://pubmed.ncbi.nlm.nih.gov/36063381>), licensed under a CC BY license.



Rabbit IgG (H+L) Cross-Adsorbed Secondary Antibody (A16104) in WB

Quantitation of plasma ADA2 protein. a Representative western blot of ADA2 in plasma (Control 1-8) and recombinant human (rh) ADA2 (5, 10, 20 ng rhADA2). b Representative standard curve of rhADA2 (y-axis: Area (square units); x-axis: ADA2 (ng)). c ADA2 activity (y-axis: ADA2 activity (U/L)) compared to ADA2 protein concentration (x-axis: ADA2 concentration (μg/mL)) for each adult and pediatric healthy control (n = 99, age = 5 months-45 yrs) and d for controls > 5 yrs of age (n = 64). Outliers are denoted by open circles and were excluded from statistical analyses. Image collected and cropped by CiteAb from the following publication (<https://pubmed.ncbi.nlm.nih.gov/32650798>), licensed under a CC BY license.

View more figures on thermofisher.cn

PfMORC protein regulates chromatin accessibility and transcriptional repression in the human malaria parasite, *Plasmodium falciparum*. *Elife* (2024)

OLIGONUCLEOTIDES TARGETING THE 3' SPLICE SITE DOWNSTREAM OF A MICROEXON AS AN INNOVATIVE THERAPY FOR AUTISM *bioRxiv* (2024)

Identification of the proliferative activity of germline progenitor cells in the adult ovary of the bat *Artibeus jamaicensis*. *Zygote* (2024)

Metformin Alleviates Inflammation and Induces Mitophagy in Human Retinal Pigment Epithelium Cells Suffering from Mitochondrial Damage. *Cells* (2024)

The nucleolar phase of signal recognition particle assembly. *Life Sci Alliance* (2024)

For Research Use Only. Not for use in diagnostic procedures. Not for resale without express authorization. Products are warranted to operate or perform substantially in conformance with published Product specifications in effect at the time of sale, as set forth in the Production documentation, specifications and/or accompanying package inserts ("Documentation"). No claim of suitability for use in applications regulated by FDA is made. The warranty provided herein is valid only when used by properly trained individuals. Unless otherwise stated in the Documentation, this warranty is limited to one year from date of shipment when the Product is subjected to normal, proper and intended usage. This warranty does not extend to anyone other than the Buyer. Any model or sample furnished to Buyer is merely illustrative of the general type and quality of goods and does not represent that any Product will conform to such model or sample. NO OTHER WARRANTIES, EXPRESS OR IMPLIED, ARE GRANTED INCLUDING WITHOUT LIMITATION, IMPLIED WARRANTIES OF MERCHANTABILITY, FITNESS FOR ANY PARTICULAR PURPOSE, OR NON-INFRINGEMENT. BUYER'S EXCLUSIVE REMEDY FOR NON-CONFORMING PRODUCTS DURING THE WARRANTY PERIOD IS LIMITED TO REPAIR, REPLACEMENT OF OR REFUND FOR THE NON-CONFORMING PRODUCT(S) AT SELLER'S SOLE OPTION. THERE IS NO OBLIGATION TO REPAIR, REPLACE OR REFUND FOR PRODUCTS AS THE RESULT OF (I) ACCIDENT, DISASTER OR EVENT OF FORCE MAJEURE, (II) MISUSE, FAULT OR NEGLIGENCE OF OR BY BUYER, (III) USE OF THE PRODUCTS IN A MANNER FOR WHICH THEY WERE NOT DESIGNED, OR (IV) IMPROPER STORAGE AND HANDLING OF THE PRODUCTS. Unless otherwise expressly stated on the Product or in the documentation accompanying the Product, the Product is intended for research only and is not to be used for any other purpose, including without limitation, unauthorized commercial uses, in vitro diagnostic uses, ex vivo or in vivo therapeutic uses, or any type of consumption by or application to human or animals.