

Donkey anti-Mouse IgG (H+L) Highly Cross-Adsorbed Secondary Antibody, Alexa Fluor™ Plus 555

Product Details	
Size	1 mg
Species Reactivity	Mouse
Host/Isotype	Donkey / IgG
Class	Polyclonal
Type	Secondary Antibody
Conjugate	Alexa Fluor™ Plus 555
Excitation/Emission Max	558/572 nm
Immunogen	Gamma Immunoglobins Heavy and Light chains
Form	Liquid
Concentration	2 mg/mL
Purification	Affinity chromatography
Storage buffer	proprietary buffer, pH 6.5
Contains	0.016% Methylisothiazolone, 0.016% Bromonitrodioxane
Storage conditions	4° C, store in dark
RRID	AB_2762848

Applications	Tested Dilution	Publications
Western Blot (WB)	0.1-0.4 µg/mL	-
Immunohistochemistry (IHC)	-	0 Publication
Immunocytochemistry (ICC/IF)	0.1-0.4 µg/mL	-

Product Specific Information

To minimize cross-reactivity, the donkey anti-mouse IgG whole antibodies have been cross-adsorbed against IgG from bovine, goat, chicken, guinea pig, hamster, horse, sheep, rabbit, rat, and human. Cross-adsorption or pre-adsorption is a purification step to increase specificity of the antibody resulting in less background staining and cross-reactivity. The secondary antibody solution is passed through a column matrix containing immobilized serum proteins from potentially cross-reactive species. Only the nonspecific-binding secondary antibodies are captured in the column, and the highly specific secondaries flow through. Further passages through additional columns result in highly cross-adsorbed preparations of secondary antibody. The benefits of these extra steps are apparent in multiplexing/multicolor-staining experiments where there is potential cross-reactivity with other primary antibodies or in tissue/cell fluorescent staining experiments where there may be the presence of endogenous immunoglobulins.^{^M}

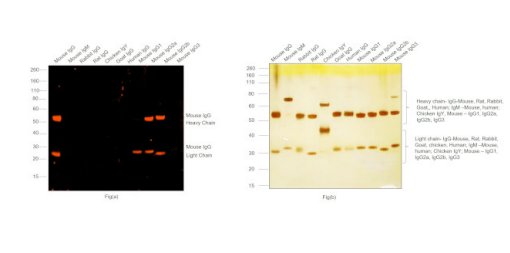
^{^M}

Using conjugate solutions: Centrifuge the protein conjugate solution briefly in a microcentrifuge before use; add only the supernatant to the experiment. This step will help eliminate any protein aggregates that may have formed during storage, thereby reducing nonspecific background staining. Because staining protocols vary with application, the appropriate dilution of antibody should be determined empirically.^{^M}

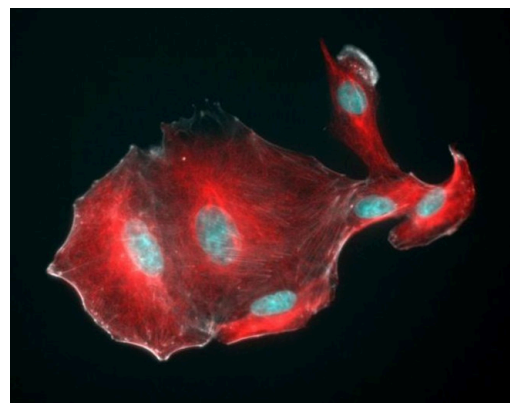
^{^M}

Specificity: This antibody binds to heavy chains on mouse IgG and light chains on all mouse immunoglobulins. This antibody does not bind non-immunoglobulin mouse serum proteins or IgG from bovine, chicken, goat, guinea pig, hamster, horse, human, rabbit, rat or sheep.

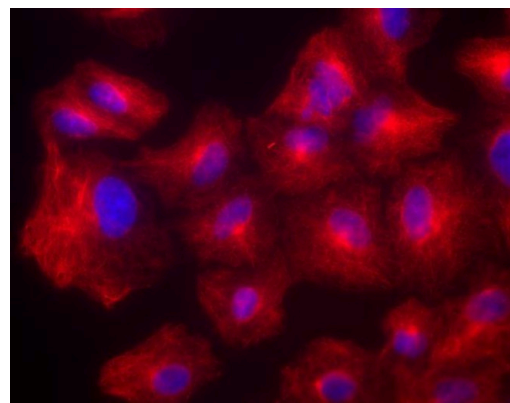
Product Images For Donkey anti-Mouse IgG (H+L) Highly Cross-Adsorbed Secondary Antibody, Alexa Fluor™ Plus 555



Mouse IgG (H+L) Highly Cross-Adsorbed Secondary Antibody (A32773)
Specificity of secondary antibody was demonstrated by specific detection of the target immunoglobulin. Antibody specificity was demonstrated by specific detection of Mouse IgG. A band at ~50 and 25 kDa corresponding to Mouse IgG Heavy and Light Chain was observed in Mouse IgG, IgG1, IgG2a, IgG2b but not in other species using Donkey anti-Mouse IgG (H+L) Highly Cross-Adsorbed Secondary Antibody, Alexa Fluor Plus 555 (Product # A32773) in Western Blot. {RE}



Mouse IgG (H+L) Highly Cross-Adsorbed Secondary Antibody (A32773) in ICC/IF
Immunofluorescent analysis of tubulin in A549 cells. The cells were fixed with 4% formaldehyde for 20 mins, permeabilized with 0.5% Triton X-100 in PBS for 20 mins, washed 3X in PBS and blocked with 3% BSA in PBS for 30 mins at RT. Cells were stained with a tubulin antibody at a dilution of 1:2000 in 3% BSA in PBS for 1 hr at RT, washed 3X in PBS and then incubated with Invitrogen Alexa Fluor Plus 555 donkey anti-mouse IgG secondary antibody (Product # A32773) prepared in 3% BSA in PBS at a dilution of 1:1000 for 1 hr at RT in the presence of NucBlue Live ReadyProbes Reagent (Product # R37605). The image contains overlay of tubulin (red) and nuclei (blue). Images were taken on an EVOS FL Auto 2 Imaging System (Product # AMAFD2000) with an Olympus 40X Super Apochromat objective (Product # AMEP4754) at 40X magnification. Actin was stained using Alexa Fluor Plus Phalloidin (Product # A30105)



Mouse IgG (H+L) Highly Cross-Adsorbed Secondary Antibody (A32773) in ICC/IF
Immunofluorescent analysis of tubulin in A549 cells. The cells were fixed with 4% formaldehyde for 20 mins, permeabilized with 0.5% Triton X-100 in PBS for 20 mins, washed 3X in PBS and blocked with 3% BSA in PBS for 30 mins at RT. Cells were stained with a tubulin antibody at a dilution of 1:2000 in 3% BSA in PBS for 1 hr at RT, washed 3X in PBS and then incubated with Invitrogen Alexa Fluor Plus 555 donkey anti-mouse IgG secondary antibody (Product # A32773) prepared in 3% BSA in PBS at a dilution of 1:1000 for 1 hr at RT in the presence of NucBlue Live ReadyProbes Reagent (Product # R37605). The image contains overlay of tubulin (red) and nuclei (blue). Images were taken on an EVOS FL Auto 2 Imaging System (Product # AMAFD2000) with an Olympus 40X Super Apochromat objective (Product # AMEP4754) at 40X magnification.

[View more figures on thermofisher.cn](https://thermofisher.cn)

127 References

Ancestry-linked stromal variations impact breast epithelial cell invasion bioRxiv (2024)

Parallel labeled-line organization of sympathetic outflow for selective organ regulation in mice. Nat Commun (2024)

Perisomatic Synaptic Targeting by Cholecystinin-Basket Interneurons through NrCAM and Ankyrin B bioRxiv (2024)

Dectin-1 induces TRPV1 sensitization and contributes to visceral hypersensitivity of irritable bowel syndrome in male mice. Eur J Pain (2024)

Local stimulation of pyramidal neurons in deep cortical layers of anesthetized rats enhances cortical visual information processing. Sci Rep (2024)

For Research Use Only. Not for use in diagnostic procedures. Not for resale without express authorization. Products are warranted to operate or perform substantially in conformance with published Product specifications in effect at the time of sale, as set forth in the Production documentation, specifications and/or accompanying package inserts ("Documentation"). No claim of suitability for use in applications regulated by FDA is made. The warranty provided herein is valid only when used by properly trained individuals. Unless otherwise stated in the Documentation, this warranty is limited to one year from date of shipment when the Product is subjected to normal, proper and intended usage. This warranty does not extend to anyone other than the Buyer. Any model or sample furnished to Buyer is merely illustrative of the general type and quality of goods and does not represent that any Product will conform to such model or sample. NO OTHER WARRANTIES, EXPRESS OR IMPLIED, ARE GRANTED INCLUDING WITHOUT LIMITATION, IMPLIED WARRANTIES OF MERCHANTABILITY, FITNESS FOR ANY PARTICULAR PURPOSE, OR NON INFRINGEMENT. BUYER'S EXCLUSIVE REMEDY FOR NON-CONFORMING PRODUCTS DURING THE WARRANTY PERIOD IS LIMITED TO REPAIR, REPLACEMENT OF OR REFUND FOR THE NON-CONFORMING PRODUCT(S) AT SELLER'S SOLE OPTION. THERE IS NO OBLIGATION TO REPAIR, REPLACE OR REFUND FOR PRODUCTS AS THE RESULT OF (i) ACCIDENT, DISASTER OR EVENT OF FORCE MAJEURE, (ii) MISUSE, FAULT OR NEGLIGENCE OF OR BY BUYER, (iii) USE OF THE PRODUCTS IN A MANNER FOR WHICH THEY WERE NOT DESIGNED, OR (iv) IMPROPER STORAGE AND HANDLING OF THE PRODUCTS. Unless otherwise expressly stated on the Product or in the documentation accompanying the Product, the Product is intended for research only and is not to be used for any other purpose, including without limitation, unauthorized commercial uses, in vitro diagnostic uses, ex vivo or in vivo therapeutic uses, or any type of consumption by or application to human or animals.