

Mouse IL-10 Instant ELISA

Enzyme-linked Immunosorbent Assay for quantitative detection of mouse IL-10

Catalog Number BMS614INST

Pub. No. MAN0016894 Rev. A.0 (30)

WARNING! Read the Safety Data Sheets (SDSs) and follow the handling instructions. Wear appropriate protective eyewear, clothing, and gloves. Safety Data Sheets (SDSs) are available from thermofisher.com/support.

Product description

The Mouse IL-10 Instant ELISA is an enzyme-linked immunosorbent assay for the quantitative detection of mouse IL-10.

Interleukin-10 is a pleiotropic cytokine playing an important role as a regulator of lymphoid and myeloid cell function. Due to the ability of IL-10 to block cytokine synthesis and several accessory cell functions of macrophages, T-cells and NK cells. In addition, IL-10 participates in regulating proliferation and differentiation of B-cells, mast cells and thymocytes.

The murine IL-10 exhibits strong DNA and amino acid sequence homology to the human IL-10 and an open reading frame in the Epstein-Barr virus genome, BCRF1 which shares many of the cellular cytokine's biological activities and may therefore play a role in the host-virus interaction.

Principles of the test

An anti-mouse IL-10 coating antibody is adsorbed onto microwells. Mouse IL-10 present in the sample or standard binds to antibodies adsorbed to the microwells; a biotin-conjugated anti-mouse IL-10 antibody binds to mouse IL-10 captured by the first antibody. Streptavidin-HRP binds to the biotin conjugated anti-mouse IL-10.

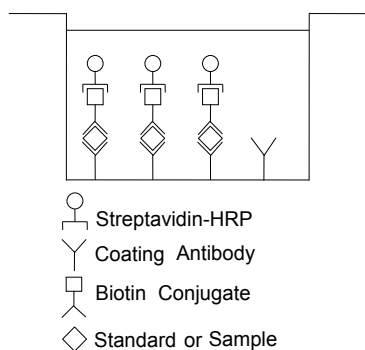


Fig. 1 First incubation

Following incubation unbound biotin conjugated antimouse IL-10 and Streptavidin-HRP is removed during a wash step, and substrate solution reactive with HRP is added to the wells.

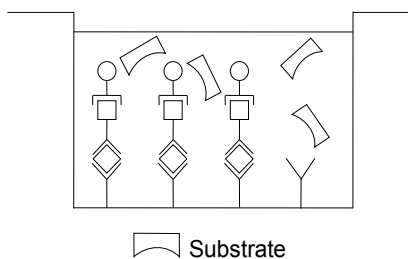


Fig. 2 Second incubation

A colored product is formed in proportion to the amount of soluble mouse IL-10 present in the sample. The reaction is terminated by addition of acid and absorbance is measured at 450 nm. A standard curve is prepared from 7 mouse IL-10 standard dilutions and mouse IL-10 sample concentration determined.

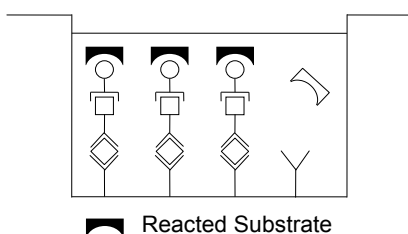


Fig. 3 Stop reaction

Reagents provided

Reagents for mouse IL-10 instant ELISA BMS614INST (128 tests)

- 1 aluminum pouch with a Microwell Plate coated with monoclonal antibody to mouse IL-10, Biotin-Conjugate (anti-mouse IL-10 monoclonal antibody), Streptavidin-HRP and Sample Diluent, lyophilized
- 2 aluminum pouches with a mouse IL-10 Standard curve (colored)
- 1 bottle (25 mL) Wash Buffer Concentrate 20x (PBS with 1% Tween™ 20)
- 1 vial (12 mL) Sample Diluent (Use when an external predilution of the samples is needed)
- 1 vial (15 mL) Substrate Solution (tetramethyl-benzidine)
- 1 vial (15 mL) Stop Solution (1M Phosphoric acid)
- 2 Adhesive Films

Storage instructions

Store ELISA plate and Standard curves or whole kit at -20°C. The plate and the standard curves can also be removed, stored at -20°C, remaining kit reagents can be stored between 2° and 8°C. Expiry of the kit and reagents is stated on labels.

The expiry of the kit components can only be guaranteed if the components are stored properly, and if, in case of repeated use of one component, the reagent is not contaminated by the first handling.

Specimen collection

Cell culture supernatant, serum and plasma (EDTA, citrate) were tested with this assay. Other biological samples might be suitable for use in the assay. Remove serum or plasma from the clot or cells as soon as possible after clotting and separation.

Samples containing a visible precipitate must be clarified prior to use in the assay. Do not use grossly hemolyzed or lipemic specimens.

Samples must be stored frozen at -20°C to avoid loss of bioactive mouse IL-10. If samples are to be run within 24 hours, they may be stored at 2° to 8°C (refer to "Performance characteristics" on page 4).

Avoid repeated freeze-thaw cycles. Prior to assay, the frozen sample should be brought to room temperature slowly and mixed gently.

Materials required but not provided

- 5 mL and 10 mL graduated pipettes
- 5 µL to 1000 µL adjustable single channel micropipettes with disposable tips
- adjustable multichannel micropipettes (for volumes between 50 µL and 500 µL) with disposable tips
- Multichannel micropipette reservoir
- Beakers, flasks, cylinders necessary for preparation of reagents
- Device for delivery of wash solution (multichannel wash bottle or automatic wash system)
- Microwell strip reader capable of reading at 450 nm (620 nm as optional reference wave length)
- Glass-distilled or deionized water
- Statistical calculator with program to perform linear regression analysis

Precautions for use

- All chemicals should be considered as potentially hazardous. We therefore recommend that this product is handled only by those persons who have been trained in laboratory techniques and that it is used in accordance with the principles of good laboratory practice. Wear suitable protective clothing such as laboratory overalls, safety glasses, and gloves. Care should be taken to avoid contact with skin or eyes. In the case of contact with skin or eyes wash immediately with water. See material safety data sheet(s) and/or safety statements(s) for specific advice.
- Reagents are intended for research use only and are not for use in diagnostic or therapeutic procedures.
- Do not mix or substitute reagents with those from other lots or other sources.
- Do not use kit reagents beyond expiration date on label.
- Do not expose kit reagents to strong light during storage or incubation.
- Do not pipet by mouth.
- Do not eat or smoke in areas where kit reagents or samples are handled.
- Avoid contact of skin or mucous membranes with kit reagents or samples.
- Rubber or disposable latex gloves should be worn while handling kit reagents or samples.
- Avoid contact of substrate solution with oxidizing agents and metal.
- Avoid splashing or generation of aerosols.
- To avoid microbial contamination or cross-contamination of reagents or samples that may invalidate the test, use disposable pipette tips and/or pipettes.
- Use clean, dedicated reagent trays for dispensing substrate reagent.
- Glass-distilled water or deionized water must be used for reagent preparation.
- Substrate solution must be at room temperature prior to use.

- Decontaminate and dispose samples and all potentially contaminated materials as if they could contain infectious agents. The preferred method of decontamination is autoclaving for a minimum of 1 hour at 121.5°C.
- Liquid wastes not containing acid and neutralized waste may be mixed with sodium hypochlorite in volumes such that the final mixture contains 1.0% sodium hypochlorite. Allow 30 minutes for effective decontamination. Liquid waste containing acid must be neutralized prior to the addition of sodium hypochlorite.

Preparation of reagents and samples

Buffer concentrate should be brought to room temperature and diluted before starting the test procedure. If crystals have formed in the buffer concentrate, warm it gently until crystals have completely dissolved.

Wash buffer (1x)

1. Pour entire contents (25 mL) of the Wash Buffer Concentrate (20x) into a clean 500 mL graduated cylinder. Bring to final volume to 500 mL with glass-distilled or deionized water. Mix gently to avoid foaming.
2. Transfer to a clean wash bottle and store at 2° to 25°C. Please note that Wash Buffer (1x) is stable for 30 days.

Test protocol

- Use plate immediately after removal from -20°C!
 - Do not wait until pellets have completely dissolved before applying samples - the binding reaction in the standard strips starts immediately after addition of water!
 - Do not try to dissolve pellets by pipetting up and down in the wells - some parts of the pellet could stick to the tip creating high variation of results.
 - Perform the washing step with at least 400 µL of washing buffer as stated in the manual or fill the wells completely - otherwise any pellet residues sticking to the rim of the well will not be removed and create high variation of results.
 - Allow the washing buffer to sit in the wells for a few seconds before aspiration.
 - Remove covers of the standard strips carefully so that all the lyophilized pellets remain in the wells.
1. Determine the number of Microwell Strips required to test the desired number of samples plus Microwell Strips for blanks and standards (colored). Each sample, standard and blank should be assayed in duplicate. Remove extra Microwell Strips from holder and store in foil bag with the desiccant provided at -20°C sealed tightly. Place Microwell Strips containing the standard curve in position A1/A2 to H1/H2 (see Table 1).

Table 1 Table depicting an example of the arrangement of blanks, standards and samples in the microwell strips:

	1	2	3	4
A	Standard 1 (2500 pg/mL)	Standard 1 (2500 pg/mL)	Sample 1	Sample 1
B	Standard 2 (1250 pg/mL)	Standard 2 (1250 pg/mL)	Sample 2	Sample 2
C	Standard 3 (625 pg/mL)	Standard 3 (625 pg/mL)	Sample 3	Sample 3
D	Standard 4 (312.5 pg/mL)	Standard 4 (312.5 pg/mL)	Sample 4	Sample 4
E	Standard 5 (156.3 pg/mL)	Standard 5 (156.3 pg/mL)	Sample 5	Sample 5
F	Standard 6 (78.1 pg/mL)	Standard 6 (78.1 pg/mL)	Sample 6	Sample 6
G	Standard 7 (39 pg/mL)	Standard 7 (39 pg/mL)	Sample 7	Sample 7
H	Blank	Blank	Sample 8	Sample 8

2. Add **distilled water** to all **standard and blank wells** as indicated on the label of the standard strips (A1, A2 to H1, H2).
3. Add 100 µL of **distilled water** to the **sample wells**.

4. Add 50 μL of each **sample**, in duplicate, to the **designated wells** and mix the contents.
5. Cover with an adhesive film and incubate at room temperature (18°C to 25°C) for 3 hours, on a microplate shaker.
6. Remove adhesive film and empty wells. **Wash** the microwell strips 4 times with approximately 400 μL Wash Buffer per well with thorough aspiration of microwell contents between washes. Allow the Wash Buffer to sit in the wells for about 10 – 15 seconds before aspiration. Take care not to scratch the surface of the microwells.

After the last wash, tap microwell strips on absorbent pad or paper towel to remove excess Wash Buffer. Use the microwell strips immediately after washing or place upside down on a wet absorbent paper for no longer than 15 minutes. Do not allow wells to dry.

7. Pipette 100 μL of **TMB Substrate Solution** to all wells, including the blank wells.
8. Incubate the microwell strips at room temperature (18° to 25°C) for about 10 min. Avoid direct exposure to intense light.

The color development on the plate should be monitored and the substrate reaction stopped (see next point of this protocol) before positive wells are no longer properly recordable. Determination of the ideal time period for color development has to be done individually for each assay.

It is recommended to add the Stop Solution when the highest standard has developed a dark blue color. Alternatively the color development can be monitored by the ELISA reader at 620 nm. The substrate reaction should be stopped as soon as Standard 1 has reached an OD of 0.9 – 0.95.

9. Stop the enzyme reaction by quickly pipetting 100 μL of **Stop Solution** into each well, including the blank wells. It is important that the Stop Solution is spread quickly and uniformly throughout the microwells to completely inactivate the enzyme. Results must be read immediately after the Stop Solution is added or within one hour if the microwell strips are stored at 2 - 8°C in the dark.
10. Read absorbance of each microwell on a spectro-photometer using 450 nm as the primary wave length (optionally 620 nm as the reference wave length; 610 nm to 650 nm is acceptable). Blank the plate reader according to the manufacturer's instructions by using the blank wells. Determine the absorbance of both the samples and the mouse IL-10 standards.

Note: In case of incubation without shaking the obtained O.D. values may be lower than indicated below. Nevertheless the results are still valid.

Calculation of results

- Calculate the average absorbance values for each set of duplicate standards and samples. Duplicates should be within 20 per cent of the mean.
- Create a standard curve by plotting the mean absorbance for each standard concentration on the ordinate against the mouse IL-10 concentration on the abscissa. Draw a best fit curve through the points of the graph (a 5-parameter curve fit is recommended).
- To determine the concentration of circulating mouse IL-10 for each sample, first find the mean absorbance value on the ordinate and extend a horizontal line to the standard curve. At the point of intersection, extend a vertical line to the abscissa and read the corresponding mouse IL-10 concentration.
- **Samples have been diluted 1:2, thus the concentration read from the standard curve must be multiplied by the dilution factor (x 2).**

Note: There is a common dilution factor for samples due to the conjugate which must then be included in the calculation. The samples contribute 100 μL to the final volume per well. These 100 μL are composed of 50 μL of Sample Diluent plus 50 μL of the sample. This is a 1:2 dilution.

The remaining 50 μL to give 150 μL are due to the addition of 50 μL conjugate to all wells.

50 μL Sample Diluent and 50 μL conjugate results in 100 μL reconstitution volume, addition of 50 μL sample (50 μL + 50 μL = 1:2 dilution)

- **Calculation of samples with a concentration exceeding standard 1 may result in incorrect, low mouse IL-10 levels. Such samples require further external predilution according to expected mouse IL-10 values with Sample Diluent in order to precisely quantitate the actual mouse IL-10 level.**
- It is suggested that each testing facility establishes a control sample of known mouse IL-10 concentration and runs this additional control with each assay. If the values obtained are not within the expected range of the control, the assay results may be invalid.
- A representative standard curve is shown in Figure 4. This curve cannot be used to derive test results. Every laboratory must prepare a standard curve for each group of microwell strips assayed.

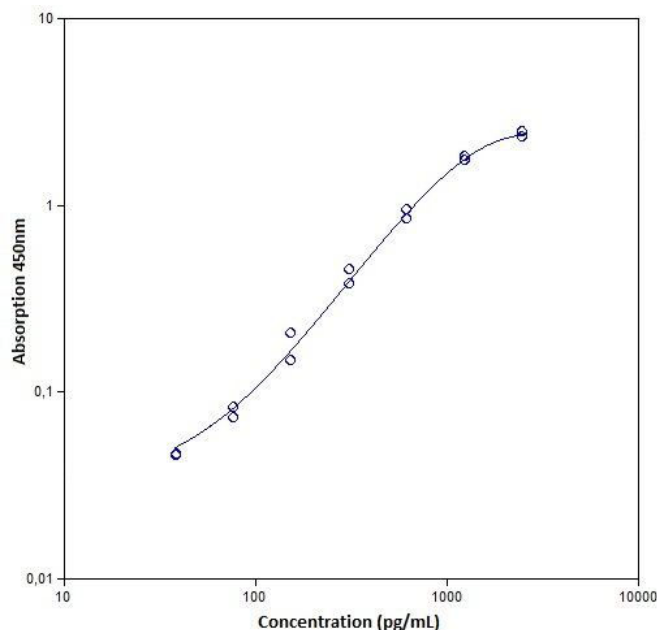


Fig. 4 Representative standard curve for mouse IL-10 Instant ELISA. Mouse IL-10 was diluted in serial 2-fold steps in Sample Diluent. Each symbol represents the mean of 3 parallel titrations. Do not use this standard curve to derive test results. A standard curve must be run for each group of microwell strips assayed.

Table 2 Typical data using the mouse IL-10 Instant ELISA

Measuring wavelength: 450 nm

Reference wavelength: 620 nm

Standard	Mouse IL-10 Concentration (pg/mL)	O.D. (450 nm)	O.D. Mean	C.V. (%)
1	2500	2.452 2.282	2.367	3.6%
2	1250	1.707 1.807	1.757	2.9%
3	625	0.839 0.934	0.886	5.3%
4	312.5	0.373 0.448	0.411	9.1%
5	156.3	0.146 0.202	0.174	15.9%
6	78.1	0.072 0.081	0.077	5.5%
7	39.1	0.046 0.045	0.046	0.8%
Blank	—	0.021 0.017	0.019	9.1%

The OD values of the standard curve may vary according to the conditions of assay performance (e.g. operator, pipetting technique, washing technique or temperature effects). Furthermore shelf life of the kit may affect enzymatic activity and thus color intensity. Values measured are still valid.

Limitations

- Since exact conditions may vary from assay to assay, a standard curve must be established for every run.
- Bacterial or fungal contamination of either screen samples or reagents or cross-contamination between reagents may cause erroneous results.
- Disposable pipette tips, flasks or glassware are preferred, reusable glassware must be washed and thoroughly rinsed of all detergents before use.
- Improper or insufficient washing at any stage of the procedure will result in either false positive or false negative results. Empty wells completely before dispensing fresh wash solution, fill with Wash Buffer as indicated for each wash cycle and do not allow wells to sit uncovered or dry for extended periods.

Performance characteristics

Sensitivity

The limit of detection of mouse IL-10 defined as the analyte concentration resulting in an absorbance significantly higher than that of the dilution medium (mean plus 2 standard deviations) was determined to be 5.28 pg/mL (mean of 6 independent assays).

Reproducibility

Intra-assay

Reproducibility within the assay was evaluated in 3 independent experiments. Each assay was carried out with 6 replicates of 8 serum samples containing different concentrations of mouse IL-10. 2 standard curves were run on each plate. The calculated overall intra-assay coefficient of variation was 6.7%.

Inter-assay

Assay to assay reproducibility within one laboratory was evaluated in 3 independent experiments. Each assay was carried out with 6 replicates of 8 serum samples containing different concentrations of mouse IL-10. 2 standard curves were run on each plate. The calculated overall inter-assay coefficient of variation was 10.1%.

Spike recovery

The spike recovery was evaluated by spiking 4 levels of mouse IL-10 into normal murine serum. Recoveries were determined in 3 independent experiments with 4 replicates each. The unspiked serum was used as blank in these experiments. The overall mean recovery of was 93%.

Dilution parallelism

4 murine serum samples with different levels of mouse IL-10 were analyzed at serial 2 fold dilutions with 4 replicates each. The overall mean recovery was 95%.

Sample stability

Freeze-Thaw stability

Aliquots of serum samples (unspiked or spiked) were stored at -20°C and thawed 5 times, and the mouse IL-10 levels determined.

There was no significant loss of mouse IL-10 immunoreactivity detected by freezing and thawing.

Storage stability

Aliquots of serum samples (spiked or unspiked) were stored at -20°C, 2-8°C, room temperature, and at 37°C, and the mouse IL-10 level determined after 24 hours. There was no significant loss of mouse IL-10 immunoreactivity detected during storage at -20°C, 4°C, and room temperature. Storage at 37°C gives rise to about 50 % loss of IL-10 immunoreactivity.

Specificity

The assay detects both natural and recombinant mouse IL-10. The interference of circulating factors of the immune system was evaluated by spiking these proteins at physiologically relevant concentrations into mouse IL-10 positive serum.

There was no crossreactivity detected.

Expected values

A panel of sera from randomly selected healthy mice was tested for mouse IL-10. There were no detectable mouse IL-10 levels found. Elevated mouse IL-10 levels depend on the type of immunological disorder.

Reagent preparation summary

Wash buffer (1x)

Add **Wash Buffer Concentrate** 20 x (25 mL) to 475 mL distilled water

Test protocol summary

1. Place standard strips in position A1/A2 to H1/H2.
2. Add distilled water, in duplicate, to all standard and blank wells as indicated on the label of the standard strips.
3. Add 100 µL distilled water to sample wells.
4. Add 50 µL sample to designated wells.
5. Cover microwell strips and incubate 3 hours at room temperature (18° to 25°C) on a microplate shaker.
6. Empty and wash microwell strips 4 times with 400 µL Wash Buffer.
7. Add 100 µL of TMB Substrate Solution to all wells including blank wells.
8. Incubate the microwell strips for about 10 minutes at room temperature (18° to 25°C).
9. Add 100 µL Stop Solution to all wells including blank wells.
10. Blank microwell reader and measure color intensity at 450 nm.

Note: Samples have been diluted 1:2, thus the concentration read from the standard curve must be multiplied by the dilution factor (x 2).

Customer and technical support

Visit thermofisher.com/support for the latest in services and support, including:

- Worldwide contact telephone numbers
- Product support, including:
 - Product FAQs
 - Software, patches, and updates
 - Training for many applications and instruments
- Order and web support

- Product documentation, including:
 - User guides, manuals, and protocols
 - Certificates of Analysis
 - Safety Data Sheets (SDSs; also known as MSDSs)

Note: For SDSs for reagents and chemicals from other manufacturers, contact the manufacturer.

Limited product warranty

Life Technologies Corporation and/or its affiliate(s) warrant their products as set forth in the Life Technologies' General Terms and Conditions of Sale found on Life Technologies' website at www.thermofisher.com/us/en/home/global/terms-and-conditions.html. If you have any questions, please contact Life Technologies at www.thermofisher.com/support.



Manufacturer: Bender MedSystems GmbH | Campus Vienna Biocenter 2 | 1030 Vienna, Austria

The information in this guide is subject to change without notice.

DISCLAIMER: TO THE EXTENT ALLOWED BY LAW, THERMO FISHER SCIENTIFIC INC. AND/OR ITS AFFILIATE(S) WILL NOT BE LIABLE FOR SPECIAL, INCIDENTAL, INDIRECT, PUNITIVE, MULTIPLE, OR CONSEQUENTIAL DAMAGES IN CONNECTION WITH OR ARISING FROM THIS DOCUMENT, INCLUDING YOUR USE OF IT.

Important Licensing Information: These products may be covered by one or more Limited Use Label Licenses. By use of these products, you accept the terms and conditions of all applicable Limited Use Label Licenses.

©2018 Thermo Fisher Scientific Inc. All rights reserved. All trademarks are the property of Thermo Fisher Scientific and its subsidiaries unless otherwise specified. All other trademarks are the property of their respective owners.