

# CD281 (TLR1) Monoclonal Antibody (eBioTR23 (TR23)), eFluor™ 660, eBioscience™

Product Details	
Size	100 µg
Species Reactivity	Mouse
Published Species	C. elegans
Host/Isotype	Rat / IgG2a, kappa
Recommended Isotype Control	Rat IgG2a kappa Isotype Control (eBR2a), eFluor™ 660, eBioscience™
Class	Monoclonal
Type	Antibody
Clone	eBioTR23 (TR23)
Conjugate	eFluor™ 660
Excitation/Emission Max	651/668 nm
Form	Liquid
Concentration	0.2 mg/mL
Purification	Affinity chromatography
Storage buffer	PBS, pH 7.2
Contains	0.09% sodium azide
Storage conditions	4°C, store in dark, DO NOT FREEZE!
RRID	AB_2574305

Applications	Tested Dilution	Publications
Flow Cytometry (Flow)	1 µg/test	1 Publication

## Product Specific Information

**Description:** The eBioTR23 monoclonal antibody reacts with mouse Toll-like receptor 1 (TLR1, CD281). TLR1 is an approximately 98 kDa protein belonging to the Toll-like receptor family, and is closely-related to mouse TLR6 in both structure and function. Through the formation of a complex with TLR2, TLR1 is able to bind bacterially-derived triacyl lipopeptides, as well as soluble factors released from *Neisseria meningitidis*. TLR1 is expressed by macrophages and macrophages in TLR1-deficient mice display impaired production of inflammatory cytokines upon stimulation with triacyl lipopeptides and lipoproteins from mycobacteria.

**Applications Reported:** This eBioTR23 (TR23) antibody has been reported for use in flow cytometric analysis.

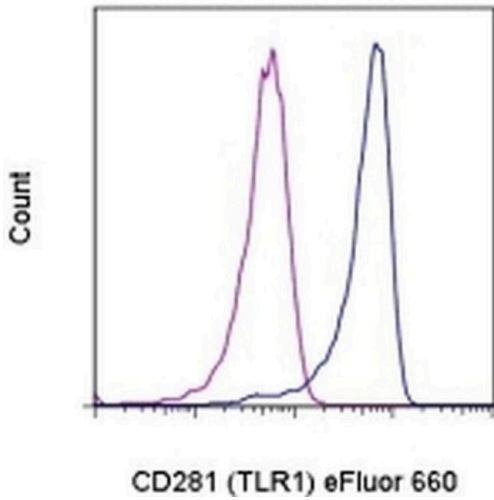
**Applications Tested:** This eBioTR23 (TR23) antibody has been tested by flow cytometric analysis of transfected cells. This can be used at less than or equal to 1 µg per test. A test is defined as the amount (µg) of antibody that will stain a cell sample in a final volume of 100 µL. Cell number should be determined empirically but can range from 10<sup>5</sup> to 10<sup>8</sup> cells/test. It is recommended that the antibody be carefully titrated for optimal performance in the assay of interest.

eFluor® 660 is a replacement for Alexa Fluor® 647. eFluor® 660 emits at 659 nm and is excited with the red laser (633 nm). Please make sure that your instrument is capable of detecting this fluorochrome.

Excitation: 633-647 nm; Emission: 668 nm; Laser: Red Laser.

Filtration: 0.2 µm post-manufacturing filtered.

## Product Images For CD281 (TLR1) Monoclonal Antibody (eBioTR23 (TR23)), eFluor™ 660, eBioscience™



### CD281 (TLR1) Antibody (50-9011-82) in Flow

Staining of TLR1 transfected cells with 0.5 µg of Rat IgG2a K Isotype Control eFluor® 660 (Product # 50-4321-82) (blue histogram) or 0.5 µg of Anti-Mouse CD281 (TLR1) eFluor® 660 (purple histogram). Total viable cells were used for analysis.

## 1 Reference

### Flow Cytometry (1)

Clinical and experimental immunology

#### Peptidoglycan-treated tumor antigen-pulsed dendritic cells impart complete resistance against tumor rechallenge.

"50-9011 was used in Flow cytometry/Cell sorting to indicate that peptidoglycan-activated dendritic cells induce robust host-protective anti-tumour T cells that completely resist tumour growth and recurrence."

Authors: Patidar A, Selvaraj S, Chauhan P, Guzman CA, Ebsensen T, Sarkar A, Chattopadhyay D, Saha B

Year  
2020

Species  
C. elegans

For Research Use Only. Not for use in diagnostic procedures. Not for resale without express authorization. Products are warranted to operate or perform substantially in conformance with published Product specifications in effect at the time of sale, as set forth in the Production documentation, specifications and/or accompanying package inserts ("Documentation"). No claim of suitability for use in applications regulated by FDA is made. The warranty provided herein is valid only when used by properly trained individuals. Unless otherwise stated in the Documentation, this warranty is limited to one year from date of shipment when the Product is subjected to normal, proper and intended usage. This warranty does not extend to anyone other than the Buyer. Any model or sample furnished to Buyer is merely illustrative of the general type and quality of goods and does not represent that any Product will conform to such model or sample. NO OTHER WARRANTIES, EXPRESS OR IMPLIED, ARE GRANTED INCLUDING WITHOUT LIMITATION, IMPLIED WARRANTIES OF MERCHANTABILITY, FITNESS FOR ANY PARTICULAR PURPOSE, OR NON-INFRINGEMENT. BUYER'S EXCLUSIVE REMEDY FOR NON-CONFORMING PRODUCTS DURING THE WARRANTY PERIOD IS LIMITED TO REPAIR, REPLACEMENT OF OR REFUND FOR THE NON-CONFORMING PRODUCT(S) AT SELLER'S SOLE OPTION. THERE IS NO OBLIGATION TO REPAIR, REPLACE OR REFUND FOR PRODUCTS AS THE RESULT OF (I) ACCIDENT, DISASTER OR EVENT OF FORCE MAJEURE, (II) MISUSE, FAULT OR NEGLIGENCE OF OR BY BUYER, (III) USE OF THE PRODUCTS IN A MANNER FOR WHICH THEY WERE NOT DESIGNED, OR (IV) IMPROPER STORAGE AND HANDLING OF THE PRODUCTS. Unless otherwise expressly stated on the Product or in the documentation accompanying the Product, the Product is intended for research only and is not to be used for any other purpose, including without limitation, unauthorized commercial uses, in vitro diagnostic uses, ex vivo or in vivo therapeutic uses, or any type of consumption by or application to human or animals.