

E-cadherin Monoclonal Antibody (HECD-1)

Product Details	
Size	100 µg
Species Reactivity	Guinea pig, Human
Published Species	Dog, Avian, C. elegans, Rat, Fruit fly, Insect, Bovine, Human, Mouse
Host/Isotype	Mouse / IgG1
Class	Monoclonal
Type	Antibody
Clone	HECD-1
Conjugate	Unconjugated
Immunogen	Human breast tumor cell line MCF-7.
Form	Lyophilized
Concentration	2.0 mg/mL
Purification	Ion-exchange chromatography
Storage buffer	PBS, pH 7.4, with 1% BSA
Contains	no preservative
Storage conditions	4°C
RRID	AB_2533003

Applications	Tested Dilution	Publications
Western Blot (WB)	2-10 µg/mL	49 Publications
Immunohistochemistry (IHC)	-	35 Publications
Immunohistochemistry (Paraffin) (IHC (P))	2-10 µg/mL	46 Publications
Immunohistochemistry (Frozen) (IHC (F))	2-10 µg/mL	4 Publications
Immunocytochemistry (ICC/IF)	1 µg/mL	53 Publications
Flow Cytometry (Flow)	1 µg/mL	7 Publications
ELISA (ELISA)	2-10 µg/mL	1 Publication
Immunoprecipitation (IP)	-	3 Publications
Neutralization (Neu)	-	1 Publication
Inhibition Assays (Inhibition)	100 µg/mL	3 Publications
Affinity Purification (AP)	-	1 Publication
Miscellaneous PubMed (Misc)	-	96 Publications

Product Specific Information

Source: Monoclonal antibody was obtained by fusing the P3-X63-Ag8-U1 mouse myeloma cell line with spleen cells of BALB/c mouse after immunization with human breast tumor cell line MCF-7.

Specificity: This antibody specifically reacts with human E-cadherin. This antibody inhibits E-cadherin dependent cell-cell contact.

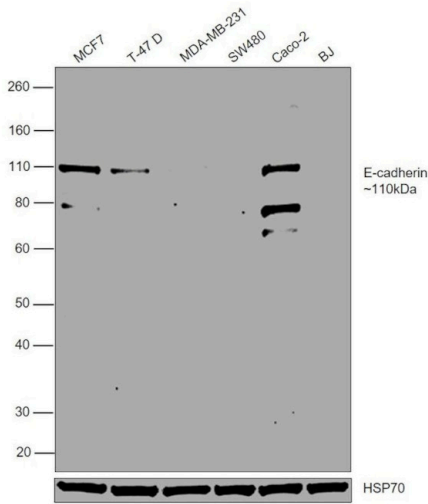
Cross reactivity: This antibody reacts with guinea pig E-cadherin. This antibody does not react with bovine, dog, rat or chicken E-cadherin.

Storage: 4°C This product does not contain preservative. The stock solution (2.0 mg/mL) should be stored in aliquots at -20°C for 1 year, or should be stored at 4°C for 6 months after adding 0.1% sodium azide. Avoid repeated freeze-thaw cycles. Diluted antibody should not be stored.

Reconstitution: Dissolve the lyophilized antibody in 50 µL of distilled water (final concentration: 2.0 mg/mL). This solution can be used as a stock solution. If dilution is necessary for your application, dilute the stock solution with the following Dilution solution just prior to use. When the entire amount of antibody is to be used over a short time period, it may be dissolved directly in 500 µL or more of the Dilution solution. Be sure to store the antibody at a minimum concentration of 2.0 mg/mL. A lower antibody concentration may result in decreased stability. Reconstituted antibody solution should contain 0.1% sodium azide as a preservative when stored at 4°C.

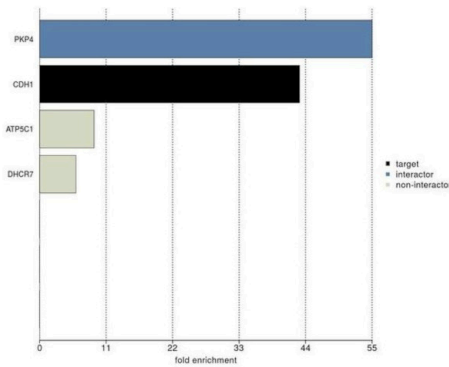
Ca²⁺ should be contained in all the buffers to stabilize cadherin antigen.

Product Images For E-cadherin Monoclonal Antibody (HECD-1)



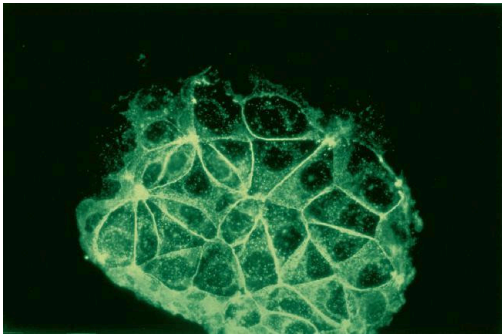
E-cadherin Antibody (13-1700)

Antibody specificity was demonstrated by detection of differential basal expression of the target across the cell lines tested owing to their inherent genetic constitution. Relative expression of E-cadherin was observed in all tested cell lines except MDA-MB-231, SW480 and BJ using Anti-E-cadherin Monoclonal Antibody (HECD-1) (Product # 13-1700) in Western Blot. {RE}



E-cadherin Antibody (13-1700)

IP-MS enrichment of CDH1 (LFQ intensity): CDH1 was enriched 43-fold from MCF7 lysate compared to background proteins, using the optimized IP-MS workflow with Pierce MS-Compatible Magnetic IP Kit protein A/G (Product # 90409) and CDH1 antibody (Product # 13-1700). The STRING database (www.string-db.org) was used to identify the protein interactor list. See more information on IP-MS verification of antibody selectivity. {IP-MS}



E-cadherin Antibody (13-1700) in ICC/IF

Immunofluorescence staining of MCF-7 cells using Mouse E-Cadherin Monoclonal Antibody, clone HECD-1 (Product # 13-1700).

View more figures on thermofisher.cn

Western Blot (49)

Genesis (New York, N.Y. : 2000)

CircSCNN1A inhibits the proliferation, migration and invasion of renal cell carcinoma cells by decreasing CLDN8 expression through miR-590-5p.

"13-1700 was used in Western Blotting to elucidate the precise function and underlying mechanism of circSCNN1A in renal cell carcinoma progression."

Authors: Guo T,Xiong W,Liu C,Zhu L,Xie L

Year
2024

Species
Human

Dilution
1:1,000

Journal of experimental & clinical cancer research : CR

Mesothelin promotes brain metastasis of non-small cell lung cancer by activating MET.

"13-1700 was used in Western Blotting to demonstrate that Mesothelin plays a critical role in Brain metastasis BM of non-small cell lung cancer NSCLC by modulating the JNK/MET signalling network and thus, provides a potential novel therapeutic target for preventing BM in NSCLC patients."

Authors: Xia S,Duan W,Xu M,Li M,Tang M,Wei S,Lin M,Li E,Liu W,Wang Q

Year
2024

Species
C. elegans

Dilution
1:500

[View more WB references on thermofisher.cn](#)

Immunohistochemistry (35)

Stem cell research & therapy

Mesenchymal stem cell aggregation mediated by integrin 4/VCAM-1 after intrathecal transplantation in MCAO rats.

"13-1700 was used in Immunohistochemistry to investigate the impacts of intrathecal administration of mesenchymal stem cells (MSCs) on cerebrospinal fluid (CSF) flow."

Authors: Ran Y,Dong Y,Li Y,Xie J,Zeng S,Liang C,Dai W,Tang W,Wu Y,Yu S

Year
2022

Species
Rat

iScience

Molecular dynamics and functional characterization of I37R-CFTR lasso mutation provide insights into channel gating activity.

"13-1700 was used in Immunohistochemistry to characterise 137R, a mutation located in the lasso motif of the CFTR chloride channel, by therotyping several CFTR modulators from both potentiator and corrector classes."

Authors: Wong SL,Awatade NT,Astore MA,Allan KM,Carnell MJ,Slapetova I,Chen PC,Capraro A,Fawcett LK,Whan RM,Griffith R,Ooi CY,Kuyucak S,Jaffe A,Waters SA

Year
2022

Species
Human

Dilution
1:250

[View more IHC references on thermofisher.cn](#)

More applications with references on thermofisher.cn

IHC (P) (46)

IHC (F) (4)

ICC/IF (53)

Flow (7)

ELISA (1)

IP (3)

Neu (1)

Inhibition (3)

AP (1)

Misc (96)

For Research Use Only. Not for use in diagnostic procedures. Not for resale without express authorization. Products are warranted to operate or perform substantially in conformance with published Product specifications in effect at the time of sale, as set forth in the Production documentation, specifications and/or accompanying package inserts ("Documentation"). No claim of suitability for use in applications regulated by FDA is made. The warranty provided herein is valid only when used by properly trained individuals. Unless otherwise stated in the Documentation, this warranty is limited to one year from date of shipment when the Product is subjected to normal, proper and intended usage. This warranty does not extend to anyone other than the Buyer. Any model or sample furnished to Buyer is merely illustrative of the general type and quality of goods and does not represent that any Product will conform to such model or sample. NO OTHER WARRANTIES, EXPRESS OR IMPLIED, ARE GRANTED INCLUDING WITHOUT LIMITATION, IMPLIED WARRANTIES OF MERCHANTABILITY, FITNESS FOR ANY PARTICULAR PURPOSE, OR NON INFRINGEMENT. BUYER'S EXCLUSIVE REMEDY FOR NON-CONFORMING PRODUCTS DURING THE WARRANTY PERIOD IS LIMITED TO REPAIR, REPLACEMENT OF OR REFUND FOR THE NON-CONFORMING PRODUCT(S) AT SELLER'S SOLE OPTION. THERE IS NO OBLIGATION TO REPAIR, REPLACE OR REFUND FOR PRODUCTS AS THE RESULT OF (I) ACCIDENT, DISASTER OR EVENT OF FORCE MAJEURE, (II) MISUSE, FAULT OR NEGLIGENCE OF OR BY BUYER, (III) USE OF THE PRODUCTS IN A MANNER FOR WHICH THEY WERE NOT DESIGNED, OR (IV) IMPROPER STORAGE AND HANDLING OF THE PRODUCTS. Unless otherwise expressly stated on the Product or in the documentation accompanying the Product, the Product is intended for research only and is not to be used for any other purpose, including without limitation, unauthorized commercial uses, in vitro diagnostic uses, ex vivo or in vivo therapeutic uses, or any type of consumption by or application to human or animals.