

KDEL Polyclonal Antibody, Alexa Fluor™ 488

Product Details

Size	50 µL
Species Reactivity	Hamster, Human, Mouse, Rat
Published Species	Human
Host/Isotype	Rabbit / IgG
Class	Polyclonal
Type	Antibody
Conjugate	Alexa Fluor™ 488
Excitation/Emission Max	499/520 nm
Immunogen	Synthetic peptide corresponding to residues C T(643) G E E D T S E K D E L(654) of rat GRP94
Form	Liquid
Concentration	1 mg/mL
Purification	Antigen affinity chromatography
Storage buffer	PBS, pH 7.4, with 1mg/mL BSA
Contains	0.05% sodium azide
Storage conditions	4°C, store in dark, DO NOT FREEZE!
RRID	AB_2662647

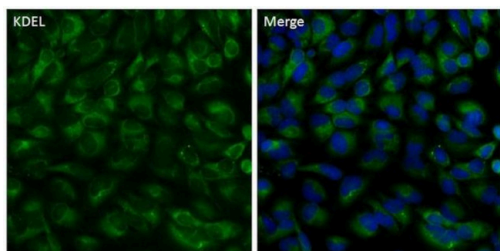
Applications	Tested Dilution	Publications
Western Blot (WB)	-	2 Publications
Immunohistochemistry (IHC)	-	1 Publication
Immunocytochemistry (ICC/IF)	1-10 µg/mL	1 Publication

Product Specific Information

PA1013A488 detects KDEL from human, rat, mouse and hamster.

The PA1013A488 immunogen is a synthetic peptide corresponding to residues C T(643) G E E D T S E K D E L(654) of rat GRP94.

Product Images For KDEL Polyclonal Antibody, Alexa Fluor™ 488



KDEL Antibody (PA1-013-A488) in ICC/IF

Immunofluorescent analysis of KDEL/ER (green) in HeLa cells. The cells were permeabilized with 0.1% Triton X-100 in TBS for 15 minutes, and blocked with 3% Blocker BSA in PBS (Product # 37525) for 30 minutes at room temperature. Cells were stained with a KDEL/ER Rabbit polyclonal antibody, AlexaFluor 488 conjugate (Product # PA1-013-A488), at a concentration of 10 µg/mL in blocking buffer for at least 1 hour at room temperature protected from light. Nuclei (blue) were stained with Hoechst 33342 dye (Product # 62249) at a dilution of 1:10,000 in blocking buffer. Images were taken on a Thermo Scientific ToxInsight Instrument at 20X magnification.

[View more figures on thermofisher.cn](https://thermofisher.cn)

4 References

Western Blot (2)

The Journal of biological chemistry

Primary murine airway smooth muscle cells exposed to poly(I,C) or tunicamycin synthesize a leukocyte-adhesive hyaluronan matrix.

"Published figure using KDEL polyclonal antibody (Product # PA1-013-A488) in Western Blot"

Authors: Lauer ME, Mukhopadhyay D, Fulop C, de la Motte CA, Majors AK, Hascall VC

Year
2009

The Journal of biological chemistry

Differentiated murine airway epithelial cells synthesize a leukocyte-adhesive hyaluronan matrix in response to endoplasmic reticulum stress.

"Published figure using KDEL polyclonal antibody (Product # PA1-013-A488) in Western Blot"

Authors: Lauer ME, Erzurum SC, Mukhopadhyay D, Vasani A, Drazba J, Wang A, Fulop C, Hascall VC

Year
2008

Immunohistochemistry (1)

The Journal of biological chemistry

Hyaluronan Rafts on Airway Epithelial Cells.

"Published figure using KDEL polyclonal antibody (Product # PA1-013-A488) in Immunofluorescence"

Authors: Abbadi A, Lauer M, Swaidani S, Wang A, Hascall V

Year
2016

Immunocytochemistry (1)

Cancers

CircFISH: A Novel Method for the Simultaneous Imaging of Linear and Circular RNAs.

"PA1-013-A488 was used in Immunocytochemistry to present circFISH as a versatile method for the simultaneous visualization and quantification of the distribution and localization of linear and circular RNA in fixed cells and tissue samples."

Authors: Koppula A, Abdelgawad A, Guarnerio J, Batish M, Parashar V

Year
2022

Species
Human

For Research Use Only. Not for use in diagnostic procedures. Not for resale without express authorization. Products are warranted to operate or perform substantially in conformance with published Product specifications in effect at the time of sale, as set forth in the Production documentation, specifications and/or accompanying package inserts ("Documentation"). No claim of suitability for use in applications regulated by FDA is made. The warranty provided herein is valid only when used by properly trained individuals. Unless otherwise stated in the Documentation, this warranty is limited to one year from date of shipment when the Product is subjected to normal, proper and intended usage. This warranty does not extend to anyone other than the Buyer. Any model or sample furnished to Buyer is merely illustrative of the general type and quality of goods and does not represent that any Product will conform to such model or sample. NO OTHER WARRANTIES, EXPRESS OR IMPLIED, ARE GRANTED INCLUDING WITHOUT LIMITATION, IMPLIED WARRANTIES OF MERCHANTABILITY, FITNESS FOR ANY PARTICULAR PURPOSE, OR NON INFRINGEMENT. BUYER'S EXCLUSIVE REMEDY FOR NON-CONFORMING PRODUCTS DURING THE WARRANTY PERIOD IS LIMITED TO REPAIR, REPLACEMENT OF OR REFUND FOR THE NON-CONFORMING PRODUCT(S) AT SELLER'S SOLE OPTION. THERE IS NO OBLIGATION TO REPAIR, REPLACE OR REFUND FOR PRODUCTS AS THE RESULT OF (I) ACCIDENT, DISASTER OR EVENT OF FORCE MAJEURE, (II) MISUSE, FAULT OR NEGLIGENCE OF OR BY BUYER, (III) USE OF THE PRODUCTS IN A MANNER FOR WHICH THEY WERE NOT DESIGNED, OR (IV) IMPROPER STORAGE AND HANDLING OF THE PRODUCTS. Unless otherwise expressly stated on the Product or in the documentation accompanying the Product, the Product is intended for research only and is not to be used for any other purpose, including without limitation, unauthorized commercial uses, in vitro diagnostic uses, ex vivo or in vivo therapeutic uses, or any type of consumption by or application to human or animals.