

Bcl-2 Monoclonal Antibody (10C4), eFluor™ 660, eBioscience™

Product Details	
Size	100 Tests
Species Reactivity	Mouse, Rat
Host/Isotype	Mouse / IgG1, kappa
Recommended Isotype Control	Mouse IgG1 kappa Isotype Control (P3.6.2.8.1), eFluor™ 660, eBioscience™
Class	Monoclonal
Type	Antibody
Clone	10C4
Conjugate	eFluor™ 660
Excitation/Emission Max	651/668 nm
Form	Liquid
Concentration	5 µL/Test
Purification	Affinity chromatography
Storage buffer	PBS, pH 7.2, with BSA
Contains	0.09% sodium azide
Storage conditions	4°C, store in dark, DO NOT FREEZE!
RRID	AB_2574274

Applications	Tested Dilution	Publications
Flow Cytometry (Flow)	5 µL (0.25 µg)/test	1 Publication

Product Specific Information

Description: The 10C4 monoclonal antibody reacts with mouse and rat Bcl-2, also known as B cell lymphoma 2. Bcl-2 is the founding member of the Bcl-2 family of evolutionarily-conserved proteins that regulate cell death/survival. Members of the Bcl-2 family include the pro-apoptotic proteins BAD, Bax, and Bim, and the anti-apoptotic proteins Bcl-2, Bcl-xL, and Mcl-1. Bcl-2 inhibits apoptosis by preventing the release of cytochrome c from the mitochondria. Mutation of Bcl-2 or overexpression of Bcl-2 due to chromosomal translocation has been identified as a contributing factor in numerous cancers. In developing thymocytes, Bcl-2 is expressed at high levels in CD4-CD8- double negative and in CD4+ and CD8+ single positive thymocytes; Bcl-2 expression is greatly diminished in CD4+CD8+ double positive thymocytes.

Applications Reported: This 10C4 antibody has been reported for use in intracellular staining followed by flow cytometric analysis.

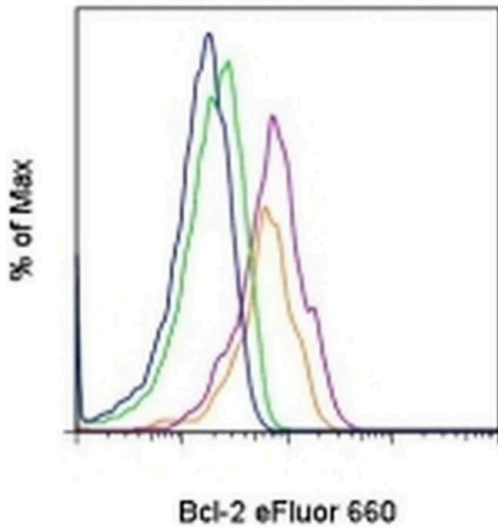
Applications Tested: This 10C4 antibody has been pre-titrated and tested by intracellular flow cytometric analysis of mouse splenocytes and thymocytes using the Intracellular Fixation & Permeabilization Buffer Set (Product # 88-8824-00) and protocol. Please refer to BestProtocols®: Protocol A: Two step protocol for (cytoplasmic) intracellular proteins located under the Resources Tab online. This can be used at 5 µL (0.25 µg) per test. A test is defined as the amount (µg) of antibody that will stain a cell sample in a final volume of 100 µL. Cell number should be determined empirically but can range from 10⁵ to 10⁸ cells/test.

eFluor® 660 is a replacement for Alexa Fluor® 647. eFluor® 660 emits at 659 nm and is excited with the red laser (633 nm). Please make sure that your instrument is capable of detecting this fluorochrome.

Excitation: 633-647 nm; Emission: 668 nm; Laser: Red Laser.

Filtration: 0.2 µm post-manufacturing filtered.

Product Images For Bcl-2 Monoclonal Antibody (10C4), eFluor™ 660, eBioscience™



Bcl-2 Antibody (50-6992-42) in Flow

Mouse thymocytes were surface stained with Anti-Mouse CD4 PE (Product # 12-0042-82) and Anti-Mouse CD8a PerCP-Cyanine5-5 (Product # 45-0081-82) followed by intracellular staining with Anti-Mouse/Rat Bcl-2 eFluor® 660 using the Intracellular Fixation & Permeabilization Buffer Set (Product # 88-8824-00) and protocol. CD4+ single positive (purple histogram), CD8+ single positive (orange histogram), and CD4+CD8+ double positive thymocytes (green histogram) were used for analysis. Mouse IgG1 K isotype control (Product # 50-4714-82) is shown in the blue histogram.

1 Reference

Flow Cytometry (1)

Cell reports

Chronic stress physically spares but functionally impairs innate-like invariant T cells.

"Published figure using Bcl-2 monoclonal antibody (Product # 50-6992-42) in Flow Cytometry"

Authors: Rudak PT, Choi J, Parkins KM, Summers KL, Jackson DN, Foster PJ, Skaro AI, Leslie K, McAlister VC, Kuchroo VK, Inoue W, Lantz O, Haeryfar SMM

Year
2021

For Research Use Only. Not for use in diagnostic procedures. Not for resale without express authorization. Products are warranted to operate or perform substantially in conformance with published Product specifications in effect at the time of sale, as set forth in the Production documentation, specifications and/or accompanying package inserts ("Documentation"). No claim of suitability for use in applications regulated by FDA is made. The warranty provided herein is valid only when used by properly trained individuals. Unless otherwise stated in the Documentation, this warranty is limited to one year from date of shipment when the Product is subjected to normal, proper and intended usage. This warranty does not extend to anyone other than the Buyer. Any model or sample furnished to Buyer is merely illustrative of the general type and quality of goods and does not represent that any Product will conform to such model or sample. NO OTHER WARRANTIES, EXPRESS OR IMPLIED, ARE GRANTED INCLUDING WITHOUT LIMITATION, IMPLIED WARRANTIES OF MERCHANTABILITY, FITNESS FOR ANY PARTICULAR PURPOSE, OR NON-INFRINGEMENT. BUYER'S EXCLUSIVE REMEDY FOR NON-CONFORMING PRODUCTS DURING THE WARRANTY PERIOD IS LIMITED TO REPAIR, REPLACEMENT OF OR REFUND FOR THE NON-CONFORMING PRODUCT(S) AT SELLER'S SOLE OPTION. THERE IS NO OBLIGATION TO REPAIR, REPLACE OR REFUND FOR PRODUCTS AS THE RESULT OF (I) ACCIDENT, DISASTER OR EVENT OF FORCE MAJEURE, (II) MISUSE, FAULT OR NEGLIGENCE OF OR BY BUYER, (III) USE OF THE PRODUCTS IN A MANNER FOR WHICH THEY WERE NOT DESIGNED, OR (IV) IMPROPER STORAGE AND HANDLING OF THE PRODUCTS. Unless otherwise expressly stated on the Product or in the documentation accompanying the Product, the Product is intended for research only and is not to be used for any other purpose, including without limitation, unauthorized commercial uses, in vitro diagnostic uses, ex vivo or in vivo therapeutic uses, or any type of consumption by or application to human or animals.