

Donkey anti-Sheep IgG (H+L) Cross-Adsorbed Secondary Antibody, Alexa Fluor™ 633

Product Details	
Size	1 mg
Species Reactivity	Sheep
Host/Isotype	Donkey / IgG
Class	Polyclonal
Type	Secondary Antibody
Conjugate	Alexa Fluor™ 633
Excitation/Emission Max	631/650 nm
Immunogen	Gamma Immunoglobins Heavy and Light chains
Form	Liquid
Concentration	2 mg/mL
Purification	purified
Storage buffer	PBS, pH 7.5
Contains	5mM sodium azide
Storage conditions	4°C, store in dark
RRID	AB_2535754

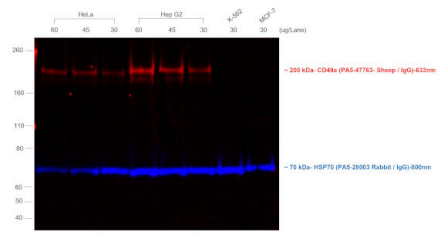
Applications	Tested Dilution	Publications
Western Blot (WB)	1:5,000-1:10,000	-
Immunohistochemistry (IHC)	1-10 µg/mL	0 Publication
Immunocytochemistry (ICC/IF)	1-10 µg/mL	-
Miscellaneous PubMed (Misc)	-	0 Publication

Product Specific Information

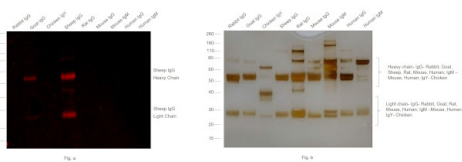
Fluorescence of this long-wavelength Alexa Fluor dye is not visible by looking through a conventional fluorescence microscope.

Product will be shipped at Room Temperature.

Sheep IgG (H+L) Cross-Adsorbed Secondary Antibody (A-21100) in WB
Multiplexed fluorescent western blot was performed using Donkey anti-Sheep IgG (H+L) Cross-Adsorbed Secondary Antibody, Alexa Fluor™ 633 (Product # A-21100). Membrane enriched extracts of HeLa (Lane 1, 2, 3), HepG2 (Lane 4, 5, 6), K-562 (Lane 7) and MCF-7 (Lane 8) were electrophoresed usingNuPAGE™ 3-8% Tris-Acetate Protein Gel (Product # EA03752BOX). Resolved proteins were transferred onto anitrocellulose membrane (Product # IB23001) byiBlot® 2 Dry BlottingSystem (Product # IB21001). The blot was probed with CD49a Polyclonal Antibody (Product # PA5-47763), and HSP70 Polyclonal Antibody (Product # PA5-28003). Secondary antibodies (Product # A-21100, 1:10,000 dilution), and (Product # A32808, 1:20,000 dilution) were used for detection of CD49a and HSP70 respectively. Fluorescent detection was performed usingiBright™ FL1500 (Product # A44115). The anti-sheep secondary antibody (Product # A-21100) specifically detects the sheep primary antibody.



Sheep IgG (H+L) Cross-Adsorbed Secondary Antibody (A-21100) in WB
Western blot was performed using Donkey anti-Sheep IgG (H+L) Cross-Adsorbed Secondary Antibody, Alexa Fluor™ 633 (Product # A-21100) and ~55, 25 kDa bands corresponding to Sheep IgG Heavy Chain and Light Chain were observed in Sheep IgG but not in Rabbit IgG, Chicken IgY, Rat IgG, Mouse IgG, Mouse IgM, Human IgG and Human IgM. Purified protein (500 ng) of Rabbit IgG (Lane 1), Goat IgG (Lane 2), Chicken IgY (Lane 3), Rat IgG (Lane 4), Sheep IgG (Lane 5), Mouse IgG (Lane 6), Mouse IgM (Lane 7), Human IgG (Lane 8), Human IgM (Lane 9) were electrophoresed usingNuPAGE™ 4-12% Bis-Tris Protein Gel (Product # NP0322BOX). Resolved proteins were then transferred onto a nitrocellulose membrane (Product # IB23001) byiBlot® 2 Dry Blotting System (Product # IB21001) and blocked using Blocker™ FL Fluorescent Blocking Buffer (10X) (Product # 37565). The blot was probed with Donkey anti-Sheep IgG (H+L) Cross-Adsorbed Secondary Antibody, Alexa Fluor™ 633 (Product # A-21100, 1:5000 dilution) and detected using theiBright™ FL1500 (Product # A44115). Silver staining was performed to establish equivalent loading of purified proteins using the Pierce™ Silver Stain Kit (Product # 24612) (Fig b). This antibody shows cross-reactivity with Goat IgG.



40 References

Pharmaceutical inhibition of the Chk2 kinase mitigates cone photoreceptor degeneration in an iPSC model of Bardet-Biedl syndrome. iScience (2025)

Maturational Stage-Dependent Contributions of the Cav3.2 T-Type Calcium Channel to Dentate Gyrus Granule Cell Excitability. Eneuro (2025)

Autophagy regulator ATG7 links energy metabolism to tubular cell fate specialization and kidney disease medRxiv (2025)

Initial Molecular Mechanisms of the Pathogenesis of Parkinson's Disease in a Mouse Neurotoxic Model of the Earliest Preclinical Stage of This Disease. Int J Mol Sci (2024)

Developmental metformin exposure does not rescue physiological impairments derived from early exposure to altered maternal metabolic state in offspring mice. Mol Metab (2024)

For Research Use Only. Not for use in diagnostic procedures. Not for resale without express authorization. Products are warranted to operate or perform substantially in conformance with published Product specifications in effect at the time of sale, as set forth in the Production documentation, specifications and/or accompanying package inserts ("Documentation"). No claim of suitability for use in applications regulated by FDA is made. The warranty provided herein is valid only when used by properly trained individuals. Unless otherwise stated in the Documentation, this warranty is limited to one year from date of shipment when the Product is subjected to normal, proper and intended usage. This warranty does not extend to anyone other than the Buyer. Any model or sample furnished to Buyer is merely illustrative of the general type and quality of goods and does not represent that any Product will conform to such model or sample. NO OTHER WARRANTIES, EXPRESS OR IMPLIED, ARE GRANTED INCLUDING WITHOUT LIMITATION, IMPLIED WARRANTIES OF MERCHANTABILITY, FITNESS FOR ANY PARTICULAR PURPOSE, OR NON INFRINGEMENT. BUYER'S EXCLUSIVE REMEDY FOR NON-CONFORMING PRODUCTS DURING THE WARRANTY PERIOD IS LIMITED TO REPAIR, REPLACEMENT OF OR REFUND FOR THE NON-CONFORMING PRODUCT(S) AT SELLER'S SOLE OPTION. THERE IS NO OBLIGATION TO REPAIR, REPLACE OR REFUND FOR PRODUCTS AS THE RESULT OF (I) ACCIDENT, DISASTER OR EVENT OF FORCE MAJEURE, (II) MISUSE, FAULT OR NEGLIGENCE OF OR BY BUYER, (III) USE OF THE PRODUCTS IN A MANNER FOR WHICH THEY WERE NOT DESIGNED, OR (IV) IMPROPER STORAGE AND HANDLING OF THE PRODUCTS. Unless otherwise expressly stated on the Product or in the documentation accompanying the Product, the Product is intended for research only and is not to be used for any other purpose, including without limitation, unauthorized commercial uses, in vitro diagnostic uses, ex vivo or in vivo therapeutic uses, or any type of consumption by or application to human or animals.