

Chicken anti-Rabbit IgG (H+L) Cross-Adsorbed Secondary Antibody, Alexa Fluor™ 594

Product Details	
Size	1 mg
Species Reactivity	Rabbit
Host/Isotype	Chicken / IgY
Class	Polyclonal
Type	Secondary Antibody
Conjugate	Alexa Fluor™ 594
Excitation/Emission Max	590/618 nm
Immunogen	Gamma Immunoglobins Heavy and Light chains
Form	Liquid
Concentration	2 mg/mL
Purification	purified
Storage buffer	PBS, pH 7.5
Contains	5mM sodium azide
Storage conditions	4°C, store in dark
RRID	AB_2535860

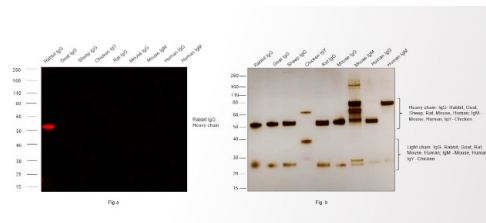
Applications	Tested Dilution	Publications
Western Blot (WB)	1:2,500-1:5,000	0 Publication
Immunohistochemistry (IHC)	1-10 µg/mL	0 Publication
Immunohistochemistry (Frozen) (IHC (F))	-	0 Publication
Immunocytochemistry (ICC/IF)	1:500-1:2,000	0 Publication
Miscellaneous PubMed (Misc)	-	0 Publication

Product Specific Information

This chicken anti-rabbit antibody reacts with IgG heavy chains and all classes of immunoglobulin light chains from rabbit. Chicken secondary antibodies have gained popularity because they demonstrate a lower level of nonspecific binding. Chicken antibodies lack a classic 'Fc' domain and will not bind to protein A or protein G, nor will they bind to mammalian IgG Fc receptors.

Product will be shipped at Room Temperature.

Product Images For Chicken anti-Rabbit IgG (H+L) Cross-Adsorbed Secondary Antibody, Alexa Fluor™ 594

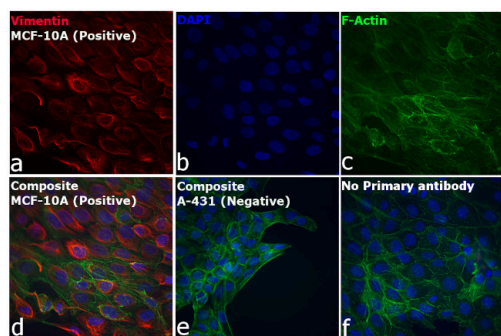


Rabbit IgG (H+L) Cross-Adsorbed Secondary Antibody (A-21442)

Specificity of secondary antibody was demonstrated by specific detection of the target immunoglobulin. Antibody specificity was demonstrated by specific detection of Rabbit IgG. A band at ~55 kDa corresponding to Rabbit IgG Heavy Chain was observed in Rabbit IgG but not in other species using Chicken anti-Rabbit IgG (H+L) Cross-Adsorbed Secondary Antibody, Alexa Fluor™ 594 (Product # A-21442) in Western Blot. {RE}

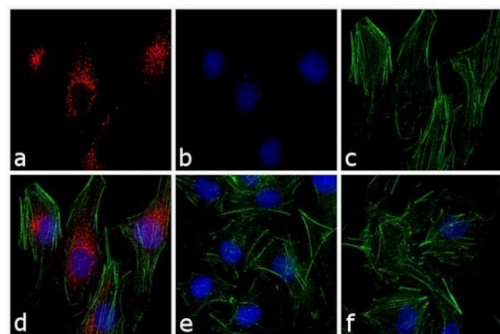
Rabbit IgG (H+L) Cross-Adsorbed Secondary Antibody (A-21442) in ICC/IF

Immunofluorescence analysis of Chicken anti-Rabbit IgG (H+L) Cross-Adsorbed Secondary Antibody, Alexa Fluor 594 (Product # A-21442) was performed using MCF 10A (positive model) and A-431 (negative model) in cells stained with Vimentin Polyclonal antibody (Product # PA5-27231). The cells were fixed with 4% paraformaldehyde for 10 minutes, permeabilized with 0.1% Triton™ X-100 for 10 minutes, blocked with 2% BSA for 1 hour and labeled with 1:500 of primary antibody overnight at 4C. Chicken anti-Rabbit IgG (H+L) Cross-Adsorbed Secondary Antibody, Alexa Fluor 594 (Product # A-21442, 1:2000) in 0.1% BSA in PBS for 1 hour at room temperature, was used for detection of Vimentin in the cytoskeleton (Panel a: Red). Nuclei (Panel b: blue) were stained with Hoechst33342 (Product # H1399). F-actin was stained with Alexa Fluor® 488 Phalloidin (Product # A12379, 1:500) (Panel c: green). Panel d represents the composite image. The specificity of the secondary antibody was proved by the absence of signal in A-431 (negative model for Vimentin) due to no primary antibody binding (Panel e). Non-specific staining was not observed with secondary antibody alone (panel f). The images were captured at 40X magnification in CellInsight CX7 LZR High-Content Screening (HCS) Platform (Product # CX7A1110LZR) and externally deconvoluted (D.Sage et al./Methods 115 (2017) 28–41).



Rabbit IgG (H+L) Cross-Adsorbed Secondary Antibody (A-21442) in ICC/IF

Immunofluorescence analysis of Chicken anti-Rabbit IgG (H+L) Cross-Adsorbed Secondary Antibody, Alexa Fluor 594 was performed using HepG2 cells stained with alpha-1 antitrypsin Rabbit Polyclonal Primary Antibody (Product # PA5-16661). The cells were fixed with 4% paraformaldehyde for 10 minutes, permeabilized with 0.1% Triton™ X-100 for 10 minutes, blocked with 1% BSA for 1 hour and labeled with Rabbit primary antibody (1:250 dilution) for 3 hours at room temperature. Chicken anti-Rabbit IgG (H+L) Cross-Adsorbed Secondary Antibody, Alexa Fluor 594 (Product # A-21442) was used at a concentration of 4 µg/mL in phosphate buffered saline containing 0.2 % BSA for 45 minutes at room temperature, for detection of alpha-1 antitrypsin in the cytoplasm (Panel a: red). Nuclei (Panel b: blue) were stained with DAPI in SlowFade® Gold Antifade Mountant (Product # S36938). F-actin was stained with Alexa Fluor® 488 Phalloidin (Product # A12379, 1:300) (Panel c: green). Panel d represents the composite image. No nonspecific staining was observed with the secondary antibody alone (panel f), or with an isotype control (panel e). The images were captured at 60X magnification.



View more figures on thermofisher.cn

133p53 and 160p53 isoforms of the tumor suppressor protein p53 exert dominant-negative effect primarily by co-aggregation. *Elife* (2025)

Glypican 3 as target therapy to prevent cell migration and proliferation in rhabdomyosarcoma. *Sci Rep* (2025)

The MFN2 Q367H variant reveals a novel pathomechanism connected to mtDNA-mediated inflammation. *Life Sci Alliance* (2025)

ICAM-1/CD18-mediated sequestration of parasitized phagocytes in cortical capillaries promotes neuronal colonization by *Toxoplasma gondii*. *Nat Commun* (2025)

Mating Increases CHST10 Activity in Rat Oviductal Mucosa to Induce the Synthesis of HNK-1 Glycoproteins: Possible Role in Sperm-Oviduct Interactions. *Int J Mol Sci* (2025)

For Research Use Only. Not for use in diagnostic procedures. Not for resale without express authorization. Products are warranted to operate or perform substantially in conformance with published Product specifications in effect at the time of sale, as set forth in the Production documentation, specifications and/or accompanying package inserts ("Documentation"). No claim of suitability for use in applications regulated by FDA is made. The warranty provided herein is valid only when used by properly trained individuals. Unless otherwise stated in the Documentation, this warranty is limited to one year from date of shipment when the Product is subjected to normal, proper and intended usage. This warranty does not extend to anyone other than the Buyer. Any model or sample furnished to Buyer is merely illustrative of the general type and quality of goods and does not represent that any Product will conform to such model or sample. NO OTHER WARRANTIES, EXPRESS OR IMPLIED, ARE GRANTED INCLUDING WITHOUT LIMITATION, IMPLIED WARRANTIES OF MERCHANTABILITY, FITNESS FOR ANY PARTICULAR PURPOSE, OR NON INFRINGEMENT. BUYER'S EXCLUSIVE REMEDY FOR NON-CONFORMING PRODUCTS DURING THE WARRANTY PERIOD IS LIMITED TO REPAIR, REPLACEMENT OF OR REFUND FOR THE NON-CONFORMING PRODUCT(S) AT SELLER'S SOLE OPTION. THERE IS NO OBLIGATION TO REPAIR, REPLACE OR REFUND FOR PRODUCTS AS THE RESULT OF (i) ACCIDENT, DISASTER OR EVENT OF FORCE MAJEURE, (ii) MISUSE, FAULT OR NEGLIGENCE OF OR BY BUYER, (iii) USE OF THE PRODUCTS IN A MANNER FOR WHICH THEY WERE NOT DESIGNED, OR (iv) IMPROPER STORAGE AND HANDLING OF THE PRODUCTS. Unless otherwise expressly stated on the Product or in the documentation accompanying the Product, the Product is intended for research only and is not to be used for any other purpose, including without limitation, unauthorized commercial uses, in vitro diagnostic uses, ex vivo or in vivo therapeutic uses, or any type of consumption by or application to human or animals.