

Rabbit anti-Goat IgG (H+L) Cross-Adsorbed Secondary Antibody, Alexa Fluor™ 647

Product Details	
Size	1 mg
Species Reactivity	Goat
Host/Isotype	Rabbit / IgG
Class	Polyclonal
Type	Secondary Antibody
Conjugate	Alexa Fluor™ 647
Excitation/Emission Max	650/671 nm
Immunogen	Gamma Immunoglobins Heavy and Light chains
Form	Liquid
Concentration	2 mg/mL
Purification	purified
Storage buffer	PBS, pH 7.5
Contains	5mM sodium azide
Storage conditions	4°C, store in dark
RRID	AB_2535863

Applications	Tested Dilution	Publications
Western Blot (WB)	1:5000-1:10,000	-
Immunohistochemistry (IHC)	1-10 µg/mL	-
Immunocytochemistry (ICC/IF)	1-10 µg/mL	0 Publication
Flow Cytometry (Flow)	-	0 Publication
Miscellaneous PubMed (Misc)	-	0 Publication

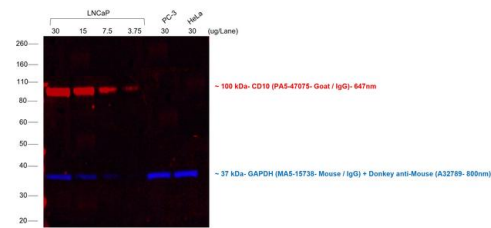
Product Specific Information

Fluorescence of this long-wavelength Alexa Fluor dye is not visible by looking through a conventional fluorescence microscope.

Product will be shipped at Room Temperature.

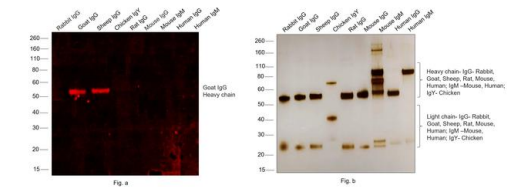
Goat IgG (H+L) Cross-Adsorbed Secondary Antibody (A-21446) in WB

Multiplexed fluorescent western blot was performed using Rabbit anti-Goat IgG (H+L) Cross-Adsorbed Secondary Antibody, Alexa Fluor™ 647 (Product # A-21446). Membrane enriched extracts of LNCap (Lane 1, 2, 3, 4), PC-3 (Lane 5) and HeLa (Lane 6) were electrophoresed using NuPAGE™ 4-12% Bis-Tris Protein Gel (Product # NP0321BOX). Resolved proteins were transferred onto anitrocellulose membrane (Product # IB23001) byiBlot® 2 Dry BlottingSystem (Product # IB21001). The blot was probed with CD10 Polyclonal Antibody (Product # PA5-47075) and GAPDH Loading Control Monoclonal Antibody (GA1R) (Product # MA5-15738). Secondary antibodies (Product # A-21446, 1: 10,000 dilution) and (Product # A32789, 1:20,000 dilution) were used for detection of CD10 and GAPDH respectively. Fluorescent detection was performed usingiBright™FL1500 (Product # A44115). The anti-goat secondary antibody (Product # A-21446) specifically detects the goat primary antibody.



Goat IgG (H+L) Cross-Adsorbed Secondary Antibody (A-21446) in WB

Western blot was performed using Rabbit anti-Goat IgG (H+L) Cross-Adsorbed Secondary Antibody, Alexa Fluor™ 647 (Product # A-21446) and ~50 kDa band corresponding to Goat IgG Heavy Chain was observed in Goat IgG but not in Rabbit IgG, Rat IgG, Chicken IgY, Mouse IgG, Mouse IgM, Human IgG and Human IgM. Purified protein (100 ng) of Rabbit IgG (Lane 1), Goat IgG (Lane 2), Sheep IgG (Lane 3), Chicken IgY (Lane 4), Rat IgG (Lane 5), Mouse IgG (Lane 6), Mouse IgM (Lane 7), Human IgG (Lane 8), Human IgM (Lane 9) (Fig. a) were electrophoresed using NuPAGE™ 4-12% Bis-Tris Protein Gel (Product # NP0321BOX). Resolved proteins were then transferred onto a nitrocellulose membrane (Product # IB23001) by iBlot® 2 Dry Blotting System (Product # IB21001). The blot was probed with Rabbit anti-Goat IgG (H+L) Cross-Adsorbed Secondary Antibody, Alexa Fluor™ 647 (Product # A-21446, 1:5000 dilution) and detected using the iBright™ FL1500 (Product # A44115). Silver staining was performed to establish equivalent loading of purified proteins using the Pierce™ Silver Stain Kit (Product # 24612) (Fig. b). The secondary antibody showed cross reactivity with Sheep IgG.



49 References

GPX3 Overexpression Ameliorates Cardiac Injury Post Myocardial Infarction Through Activating LSD1 /Hif1 Axis. J Cell Mol Med (2025)

Metformin inhibits nuclear egress of chromatin fragments in senescence and aging bioRxiv (2024)

Single-molecule imaging and molecular dynamics simulations reveal early activation of the MET receptor in cells. Nat Commun (2024)

TNF Superfamily Member 14 Drives Post-Influenza Depletion of Alveolar Macrophages Enabling Secondary Pneumococcal Pneumonia bioRxiv (2024)

Immunoengineering can overcome the glycocalyx armour of cancer cells. Nat Mater (2024)

For Research Use Only. Not for use in diagnostic procedures. Not for resale without express authorization. Products are warranted to operate or perform substantially in conformance with published Product specifications in effect at the time of sale, as set forth in the Production documentation, specifications and/or accompanying package inserts ("Documentation"). No claim of suitability for use in applications regulated by FDA is made. The warranty provided herein is valid only when used by properly trained individuals. Unless otherwise stated in the Documentation, this warranty is limited to one year from date of shipment when the Product is subjected to normal, proper and intended usage. This warranty does not extend to anyone other than the Buyer. Any model or sample furnished to Buyer is merely illustrative of the general type and quality of goods and does not represent that any Product will conform to such model or sample. NO OTHER WARRANTIES, EXPRESS OR IMPLIED, ARE GRANTED INCLUDING WITHOUT LIMITATION, IMPLIED WARRANTIES OF MERCHANTABILITY, FITNESS FOR ANY PARTICULAR PURPOSE, OR NON-INFRINGEMENT. BUYER'S EXCLUSIVE REMEDY FOR NON-CONFORMING PRODUCTS DURING THE WARRANTY PERIOD IS LIMITED TO REPAIR, REPLACEMENT OF OR REFUND FOR THE NON-CONFORMING PRODUCT(S) AT SELLER'S SOLE OPTION. THERE IS NO OBLIGATION TO REPAIR, REPLACE OR REFUND FOR PRODUCTS AS THE RESULT OF (I) ACCIDENT, DISASTER OR EVENT OF FORCE MAJEURE, (II) MISUSE, FAULT OR NEGLIGENCE OF OR BY BUYER, (III) USE OF THE PRODUCTS IN A MANNER FOR WHICH THEY WERE NOT DESIGNED, OR (IV) IMPROPER STORAGE AND HANDLING OF THE PRODUCTS. Unless otherwise expressly stated on the Product or in the documentation accompanying the Product, the Product is intended for research only and is not to be used for any other purpose, including without limitation, unauthorized commercial uses, in vitro diagnostic uses, ex vivo or in vivo therapeutic uses, or any type of consumption by or application to human or animals.