

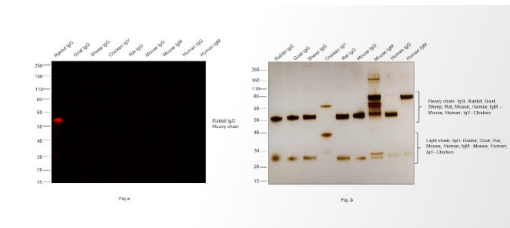
Goat anti-Rabbit IgG (H+L) Highly Cross-Adsorbed Secondary Antibody, Alexa Fluor™ 635

Product Details	
Size	1 mg
Species Reactivity	Rabbit
Host/Isotype	Goat / IgG
Class	Polyclonal
Type	Secondary Antibody
Conjugate	Alexa Fluor™ 635
Excitation/Emission Max	633/648 nm
Immunogen	Gamma Immunoglobins Heavy and Light chains
Form	Liquid
Concentration	2 mg/mL
Purification	purified
Storage buffer	PBS, pH 7.5
Contains	5mM sodium azide
Storage conditions	4°C, store in dark
RRID	AB_2536187

Applications	Tested Dilution	Publications
Western Blot (WB)	1:5,000-1:10,000	-
Immunohistochemistry (IHC)	1-10 µg/mL	-
Immunohistochemistry (Frozen) (IHC (F))	-	0 Publication
Immunocytochemistry (ICC/IF)	4 µg/mL	-
Miscellaneous PubMed (Misc)	-	0 Publication

Product Specific Information

Product will be shipped at Room Temperature.

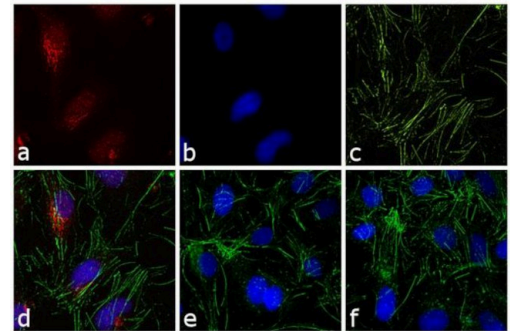


Rabbit IgG (H+L) Highly Cross-Adsorbed Secondary Antibody (A-31577)

Specificity of secondary antibody was demonstrated by specific detection of the target immunoglobulin. Antibody specificity was demonstrated by specific detection of Rabbit IgG. A band at ~55 kDa corresponding to Rabbit IgG Heavy Chain was observed in Rabbit IgG but not in other species using Goat anti-Rabbit IgG (H+L) Highly Cross-Adsorbed Secondary Antibody, Alexa Fluor™ 635 (Product # A-31577) in Western Blot. {RE}

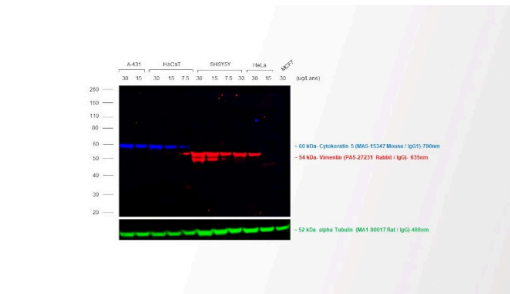
Rabbit IgG (H+L) Highly Cross-Adsorbed Secondary Antibody (A-31577) in ICC/IF

Immunofluorescence analysis of Goat anti-Rabbit IgG (H+L) Secondary Antibody, Alexa Fluor 635 was performed using HepG2 cells stained with alpha-1 antitrypsin Rabbit Polyclonal Primary Antibody (Product # PA5-16661). The cells were fixed with 4% paraformaldehyde for 10 minutes, permeabilized with 0.1% Triton™ X-100 for 10 minutes, blocked with 1% BSA for 1 hour and labeled with Rabbit primary antibody (1:250 dilution) 3 hours at room temperature. Goat anti-Rabbit IgG (H+L) Secondary Antibody, Alexa Fluor 635 (Product # A-31577) was used at a concentration of 4 µg/mL in phosphate buffered saline containing 0.2 % BSA for 45 minutes at room temperature, for detection of alpha-1 antitrypsin in the cytoplasm (Panel a: red). Nuclei (Panel b: blue) were stained with DAPI in SlowFade® Gold Antifade Mountant (Product # S36938). F-actin was stained with Alexa Fluor® 488 Phalloidin (Product # A12379, 1:300) (Panel c: green). Panel d represents the composite image. No nonspecific staining was observed with the secondary antibody alone (panel f), or with an isotype control (panel e). The images were captured at 60X magnification.



Rabbit IgG (H+L) Highly Cross-Adsorbed Secondary Antibody (A-31577) in WB

Multiplexed fluorescent western blot was performed using Goat anti-Rabbit IgG (H+L) Highly Cross-Adsorbed Secondary Antibody, Alexa Fluor 635 (Product # A-31577). Whole cell extracts of A-431 (Lane 1, 2), HaCaT (Lane 3, 4, 5), SH-SY5Y (Lane 6, 7, 8), HeLa (Lane 9, 10) and MCF7 (Lane 11) were electrophoresed usingNuPAGE™ 4-12% Bis-Tris Protein Gel (Product # NP03222BOX). Resolved proteins were transferred onto anitrocellulose membrane (Product # IB23001) byiBlot® 2 Dry BlottingSystem (Product # IB21001). The blot was probed with Cytokeratin 5 Monoclonal Antibody (3E2F1) (Product # MA5-15347), Vimentin Polyclonal Antibody (Product # PA5-27231) and alpha Tubulin Monoclonal Antibody (YL1/2) (Product # MA1-80017). Secondary antibodies (Product # A-11357, 1:20,000), (Product # A-31577, 1:10,000) and (Product # A48269, 1:10,000) were used for detection of Cytokeratin 5, Vimentin and alpha Tubulin respectively. Fluorescent detection was performed usingiBright™FL1500 (Product # A44115). The anti-rabbit secondary antibody (Product # A-31577) specifically detects the rabbit primary antibody.



View more figures on thermofisher.cn

Chronic administration of prebiotics and probiotics prevent pathophysiological hallmarks of Alzheimer's disease in the cortex of APP/PS1 mice. *Front Pharmacol* (2025)

Chronic administration of prebiotics and probiotics ameliorates pathophysiological hallmarks of Alzheimer's disease in a APP/PS1 transgenic mouse model. *Front Pharmacol* (2024)

Increased Homer Activity and NMJ Localization in the Vestibular Lesion het-/- Mouse soleus Muscle. *Int J Mol Sci* (2024)

Optogenetic Determination of Dynamic and Cell-Type-Specific Inhibitory Reversal Potentials. *J Neurosci* (2024)

New orphan disease therapies from the proteome of industrial plasma processing waste- a treatment for aceruloplasminemia. *Commun Biol* (2024)

For Research Use Only. Not for use in diagnostic procedures. Not for resale without express authorization. Products are warranted to operate or perform substantially in conformance with published Product specifications in effect at the time of sale, as set forth in the Production documentation, specifications and/or accompanying package inserts ("Documentation"). No claim of suitability for use in applications regulated by FDA is made. The warranty provided herein is valid only when used by properly trained individuals. Unless otherwise stated in the Documentation, this warranty is limited to one year from date of shipment when the Product is subjected to normal, proper and intended usage. This warranty does not extend to anyone other than the Buyer. Any model or sample furnished to Buyer is merely illustrative of the general type and quality of goods and does not represent that any Product will conform to such model or sample. NO OTHER WARRANTIES, EXPRESS OR IMPLIED, ARE GRANTED INCLUDING WITHOUT LIMITATION, IMPLIED WARRANTIES OF MERCHANTABILITY, FITNESS FOR ANY PARTICULAR PURPOSE, OR NON INFRINGEMENT. BUYER'S EXCLUSIVE REMEDY FOR NON-CONFORMING PRODUCTS DURING THE WARRANTY PERIOD IS LIMITED TO REPAIR, REPLACEMENT OF OR REFUND FOR THE NON-CONFORMING PRODUCT(S) AT SELLER'S SOLE OPTION. THERE IS NO OBLIGATION TO REPAIR, REPLACE OR REFUND FOR PRODUCTS AS THE RESULT OF (i) ACCIDENT, DISASTER OR EVENT OF FORCE MAJEURE, (ii) MISUSE, FAULT OR NEGLIGENCE OF OR BY BUYER, (iii) USE OF THE PRODUCTS IN A MANNER FOR WHICH THEY WERE NOT DESIGNED, OR (iv) IMPROPER STORAGE AND HANDLING OF THE PRODUCTS. Unless otherwise expressly stated on the Product or in the documentation accompanying the Product, the Product is intended for research only and is not to be used for any other purpose, including without limitation, unauthorized commercial uses, in vitro diagnostic uses, ex vivo or in vivo therapeutic uses, or any type of consumption by or application to human or animals.