

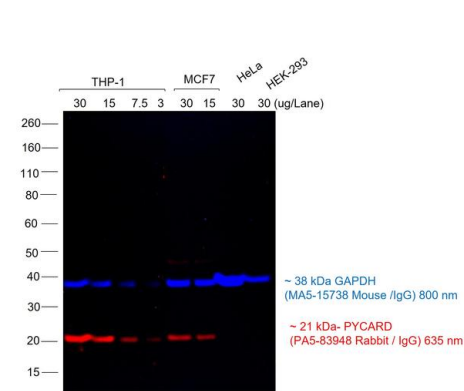
Goat anti-Rabbit IgG (H+L) Cross-Adsorbed Secondary Antibody, Alexa Fluor™ 635

Product Details	
Size	1 mg
Species Reactivity	Rabbit
Host/Isotype	Goat / IgG
Class	Polyclonal
Type	Secondary Antibody
Conjugate	Alexa Fluor™ 635
Excitation/Emission Max	633/648 nm
Immunogen	Gamma Immunoglobins Heavy and Light chains
Form	Liquid
Concentration	2 mg/mL
Purification	purified
Storage buffer	PBS, pH 7.5
Contains	5mM sodium azide
Storage conditions	4°C, store in dark
RRID	AB_2536186

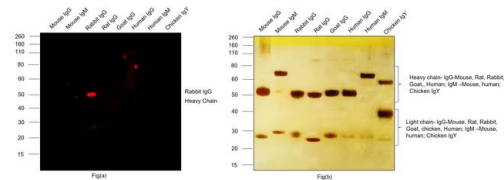
Applications	Tested Dilution	Publications
Western Blot (WB)	1:10,000	0 Publication
Immunohistochemistry (IHC)	-	0 Publication
Immunocytochemistry (ICC/IF)	1-10 µg/mL	0 Publication
Flow Cytometry (Flow)	1-10 µg/mL	0 Publication
ELISA (ELISA)	-	0 Publication
Dot blot (DB)	-	0 Publication
Miscellaneous PubMed (Misc)	-	0 Publication

Product Specific Information

Product will be shipped at Room Temperature.



Rabbit IgG (H+L) Cross-Adsorbed Secondary Antibody (A-31576) in WB
Multiplexed fluorescent western blot was performed using Goat anti-Rabbit IgG (H+L) Cross-Adsorbed Secondary Antibody, Alexa Fluor™ 635 (Product # A-31576). Whole cell extracts of THP-1 (Lane 1, 2, 3, 4), MCF7 (Lane 5, 6), HeLa (Lane 7) and HEK-293 (Lane 8) were electrophoresed using NuPAGE™ 4-12% Bis-Tris Protein Gel (Product # NP03222BOX). Resolved proteins were transferred onto nitrocellulose membrane (Product # IB23001) by iBlot® 2 Dry Blotting System (Product # IB21001). The blot was probed with PYCARD Polyclonal Antibody (Product # PA5-83948) and GAPDH Loading Control Monoclonal Antibody (GA1R) (Product # MA5-15738). Secondary antibodies (Product # A-31576, 1:10000 dilution) and (Product # A32789, 1:20000 dilution) were used for detection of PYCARD and GAPDH respectively. Fluorescent detection was performed using iBrightFL1500 (Product # A44115). The anti-rabbit secondary antibody (Product # A-31576) specifically detects the rabbit primary antibody.



Rabbit IgG (H+L) Cross-Adsorbed Secondary Antibody (A-31576) in WB
Western blot was performed using Goat anti-Rabbit IgG (H+L) Cross-Adsorbed Secondary Antibody, Alexa Fluor™ 635 (Product # A-31576) and ~50 kDa band corresponding to Rabbit IgG Heavy Chain was observed in Rabbit IgG but not in Mouse IgG, Mouse IgM, Goat IgG, Rat IgG, Goat IgG, Human IgG, Human IgM and Chicken IgY. Purified protein (100 ng) of Mouse IgG (Lane 1), Mouse IgM (Lane 2), Rabbit IgG (Lane 3), Rat IgG (Lane 4), Goat IgG (Lane 5), Human IgG (Lane 6), Human IgM (Lane 7) and Chicken IgY (Lane 8) (Fig a) were electrophoresed using NuPAGE™ 4-12% Bis-Tris Protein Gel (Product # NP03222BOX). Resolved proteins were then transferred onto a nitrocellulose membrane (Product # IB23001) by iBlot® 2 Dry Blotting System (Product # IB21001). The blot was probed with Goat anti-Rabbit IgG (H+L) Cross-Adsorbed Secondary Antibody, Alexa Fluor™ 635 (Product # A-31576, 1:2000 dilution) and detected using iBrightFL1500 (Product # A44115). Silver staining was performed to establish equivalent loading of purified proteins using the Pierce™ Silver Stain Kit (Product # 24612) (Fig b).

52 References

Tight Spaces, Tighter Signals: Spatial Constraints as Drivers of Peripheral Myelination. Cells (2025)

Genetically-encoded markers for confocal visualization of single dense core vesicles. Commun Biol (2025)

Spatially-Resolved Organoid Transfection by Porous Silicon-Mediated Optoporation. Adv Mater (2024)

Association cortical areas in the mouse contain a large population of fast-spiking GABAergic neurons that do not express parvalbumin. Eur J Neurosci (2024)

A multifaceted architectural framework of the mouse claustrum complex. J Comp Neurol (2023)

For Research Use Only. Not for use in diagnostic procedures. Not for resale without express authorization. Products are warranted to operate or perform substantially in conformance with published Product specifications in effect at the time of sale, as set forth in the Production documentation, specifications and/or accompanying package inserts ("Documentation"). No claim of suitability for use in applications regulated by FDA is made. The warranty provided herein is valid only when used by properly trained individuals. Unless otherwise stated in the Documentation, this warranty is limited to one year from date of shipment when the Product is subjected to normal, proper and intended usage. This warranty does not extend to anyone other than the Buyer. Any model or sample furnished to Buyer is merely illustrative of the general type and quality of goods and does not represent that any Product will conform to such model or sample. NO OTHER WARRANTIES, EXPRESS OR IMPLIED, ARE GRANTED INCLUDING WITHOUT LIMITATION, IMPLIED WARRANTIES OF MERCHANTABILITY, FITNESS FOR ANY PARTICULAR PURPOSE, OR NON-INFRINGEMENT. BUYER'S EXCLUSIVE REMEDY FOR NON-CONFORMING PRODUCTS DURING THE WARRANTY PERIOD IS LIMITED TO REPAIR, REPLACEMENT OF OR REFUND FOR THE NON-CONFORMING PRODUCT(S) AT SELLER'S SOLE OPTION. THERE IS NO OBLIGATION TO REPAIR, REPLACE OR REFUND FOR PRODUCTS AS THE RESULT OF (i) ACCIDENT, DISASTER OR EVENT OF FORCE MAJEURE, (ii) MISUSE, FAULT OR NEGLIGENCE OF OR BY BUYER, (iii) USE OF THE PRODUCTS IN A MANNER FOR WHICH THEY WERE NOT DESIGNED, OR (iv) IMPROPER STORAGE AND HANDLING OF THE PRODUCTS. Unless otherwise expressly stated on the Product or in the documentation accompanying the Product, the Product is intended for research only and is not to be used for any other purpose, including without limitation, unauthorized commercial uses, in vitro diagnostic uses, ex vivo or in vivo therapeutic uses, or any type of consumption by or application to human or animals.