

# CD31 Monoclonal Antibody (MEM-05), Alexa Fluor™ 488

## Product Details

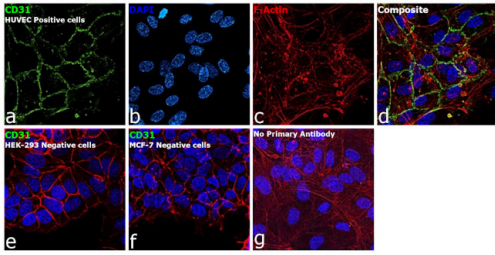
Size	100 Tests
Species Reactivity	Human
Published Species	Human
Host/Isotype	Mouse / IgG1
Class	Monoclonal
Type	Antibody
Clone	MEM-05
Conjugate	Alexa Fluor™ 488
Excitation/Emission Max	499/520 nm
Immunogen	Leukocytes of patient suffering from LGL-type leukaemia
Form	Liquid
Purification	Size-exclusion chromatography
Storage buffer	PBS with 0.2% BSA
Contains	15mM sodium azide
Storage conditions	4°C, store in dark, DO NOT FREEZE!
RRID	AB_2539509

Applications	Tested Dilution	Publications
Western Blot (WB)	Assay-dependent	-
Immunohistochemistry (Paraffin) (IHC (P))	Assay-dependent	-
Immunocytochemistry (ICC/IF)	Assay-dependent	1 Publication
Flow Cytometry (Flow)	4 µLx100 µL whole blood or 10 <sup>6</sup> cells	-

## Product Specific Information

This antibody reacts with an extracellular epitope of CD31 (PECAM-1), a 130-140 kDa type I transmembrane glycoprotein expressed on monocytes, platelets, granulocytes, endothelial cells and stem cells of the myeloid lineage.

## Product Images For CD31 Monoclonal Antibody (MEM-05), Alexa Fluor™ 488

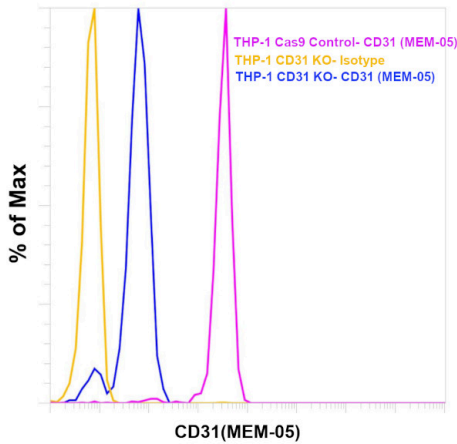


### CD31 Antibody (MA5-18135)

Antibody specificity was demonstrated by detection of differential basal expression of the target across cell models owing to their inherent genetic constitution. Immunofluorescence analysis using Anti-CD31 Monoclonal Antibody (MEM-05), Alexa Fluor 488 (Product # MA5-18135), shows was observed to be high in HUVEC in comparison to low or negative expression in HEK-293 and MCF-7. (doi: <https://doi.org/10.1371/journal.pone.0153837.g001>,<https://doi.org/10.1074/jbc.M001857200>). {RE}

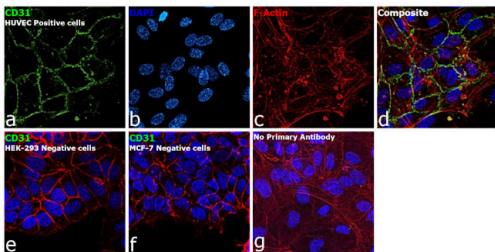
### CD31 Antibody (MA5-18135)

Antibody clone (MEM-05) specificity was demonstrated by CRISPR-Cas9 mediated knockout of target protein. Loss of signal was observed for target protein in CD31 KO cells (blue histogram) compared to the control Cas9 cells (pink histogram) using CD31 antibody (MEM-05). Yellow histogram represents staining with the isotype control. {KO}



### CD31 Antibody (MA5-18135) in ICC/IF

Immunofluorescence analysis of Platelet endothelial cell adhesion molecule was performed using 70% confluent log phase HUVEC cells. The cells were fixed with 4% paraformaldehyde for 10 minutes, permeabilized with 0.1% Triton™ X-100 for 15 minutes, and blocked with 2% BSA for 45 minutes at room temperature. The cells were labeled with CD31 Monoclonal Antibody (MEM-05), Alexa Fluor 488 (Product # MA5-18135) at 1:100 dilution in 0.1% BSA, incubated at 4 degree celsius overnight and then labeled with Donkey anti-Mouse IgG (H+L) Highly Cross-Adsorbed Secondary Antibody, Alexa Fluor Plus 488 (Product # A32766), (1:2000 dilution), for 45 minutes at room temperature (Panel a: Green). Nuclei (Panel b: Blue) were stained with ProLong™ Diamond Antifade Mountant with DAPI (Product # P36962). F-actin (Panel c: Red) was stained with Rhodamine Phalloidin (Product # R415, 1:300 dilution). Panel d represents the merged image showing Cell Junctional localization. Panel e represents no Expression in HEK-293, Panel f no expression in MCF-7 lcells, Panel g represents with no primary antibody to assess background. The images were captured at 60X magnification.



View more figures on [thermofisher.cn](http://thermofisher.cn)

## Immunocytochemistry (1)

### Biomedicines

#### Clonal and Scalable Endothelial Progenitor Cell Lines from Human Pluripotent Stem Cells.

"MA5-18135 was used in Immunocytochemistry to support the finding that hESC-derived clonal eEPC lines are a potential source of scalable therapeutic cells and cell products for treating cardiovascular disease."

Authors: Lee J, Sternberg H, Bignone PA, Murai J, Malik NN, West MD, Larocca D

Year  
2023

Species  
Human

For Research Use Only. Not for use in diagnostic procedures. Not for resale without express authorization. Products are warranted to operate or perform substantially in conformance with published Product specifications in effect at the time of sale, as set forth in the Production documentation, specifications and/or accompanying package inserts ("Documentation"). No claim of suitability for use in applications regulated by FDA is made. The warranty provided herein is valid only when used by properly trained individuals. Unless otherwise stated in the Documentation, this warranty is limited to one year from date of shipment when the Product is subjected to normal, proper and intended usage. This warranty does not extend to anyone other than the Buyer. Any model or sample furnished to Buyer is merely illustrative of the general type and quality of goods and does not represent that any Product will conform to such model or sample. NO OTHER WARRANTIES, EXPRESS OR IMPLIED, ARE GRANTED INCLUDING WITHOUT LIMITATION, IMPLIED WARRANTIES OF MERCHANTABILITY, FITNESS FOR ANY PARTICULAR PURPOSE, OR NON INFRINGEMENT. BUYER'S EXCLUSIVE REMEDY FOR NON-CONFORMING PRODUCTS DURING THE WARRANTY PERIOD IS LIMITED TO REPAIR, REPLACEMENT OF OR REFUND FOR THE NON-CONFORMING PRODUCT(S) AT SELLER'S SOLE OPTION. THERE IS NO OBLIGATION TO REPAIR, REPLACE OR REFUND FOR PRODUCTS AS THE RESULT OF (I) ACCIDENT, DISASTER OR EVENT OF FORCE MAJEURE, (II) MISUSE, FAULT OR NEGLIGENCE OF OR BY BUYER, (III) USE OF THE PRODUCTS IN A MANNER FOR WHICH THEY WERE NOT DESIGNED, OR (IV) IMPROPER STORAGE AND HANDLING OF THE PRODUCTS. Unless otherwise expressly stated on the Product or in the documentation accompanying the Product, the Product is intended for research only and is not to be used for any other purpose, including without limitation, unauthorized commercial uses, in vitro diagnostic uses, ex vivo or in vivo therapeutic uses, or any type of consumption by or application to human or animals.