

CD40 Monoclonal Antibody (LOB7/6)

Product Details	
Size	200 µg
Species Reactivity	Dog, Human
Host/Isotype	Mouse / IgG2a
Class	Monoclonal
Type	Antibody
Clone	LOB7/6
Conjugate	Unconjugated
Immunogen	CD40 Ig(Fc) fusion protein containing the EC region of human CD40 and Fc region of human IgG
Form	Liquid
Concentration	1 mg/mL
Purification	Protein A
Storage buffer	TBS
Contains	<0.1% sodium azide
Storage conditions	Store at 4°C short term. For long term storage, store at -20°C, avoiding freeze/thaw cycles.
RRID	AB_928288

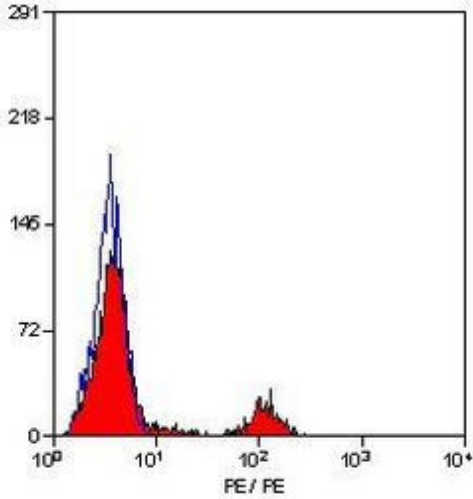
Applications	Tested Dilution	Publications
Immunohistochemistry (Paraffin) (IHC (P))	1-10 µg/mL	-
Immunohistochemistry (Frozen) (IHC (F))	1-10 µg/mL	-
Flow Cytometry (Flow)	20 µg/mL	-
Immunoprecipitation (IP)	Assay-dependent	-

Product Specific Information

This product requires protein digestion pre-treatment of paraffin sections using trypsin or pronase. A suggested positive control for immunohistochemical applications is human tonsil. For FACS analysis, use 10 µL of the suggested working dilution to label 1×10^6 cells in 100 µL.

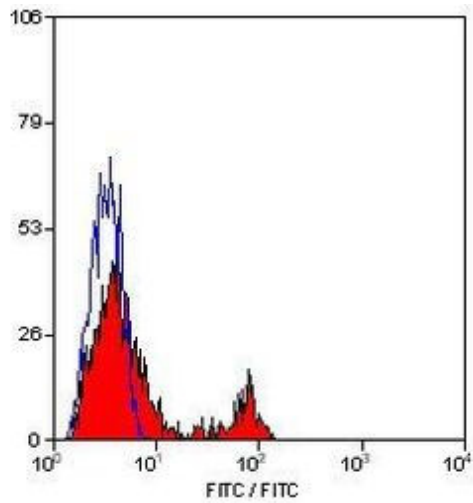
Mouse anti Human CD40 antibody, clone LOB7/6 recognizes the human CD40 cell surface antigen, a 48kDa glycoprotein expressed by B lymphocytes and weakly by some monocytes.

Product Images For CD40 Monoclonal Antibody (LOB7/6)



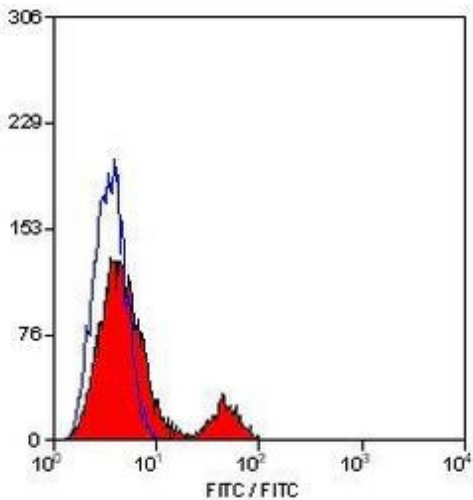
CD40 Antibody (MA1-80926) in Flow

Flow cytometric analysis of human peripheral blood lymphocytes using a CD40 /Bp50 monoclonal antibody (Product # MA1-80926)



CD40 Antibody (MA1-80926) in Flow

Flow cytometric analysis of human peripheral blood lymphocytes using a CD40 /Bp50 monoclonal antibody (Product # MA1-80926)



CD40 Antibody (MA1-80926) in Flow

Flow cytometric analysis of human peripheral blood lymphocytes using a CD40 /Bp50 monoclonal antibody (Product # MA1-80926)

[View more figures on thermofisher.cn](http://thermofisher.cn)

For Research Use Only. Not for use in diagnostic procedures. Not for resale without express authorization. Products are warranted to operate or perform substantially in conformance with published Product specifications in effect at the time of sale, as set forth in the Production documentation, specifications and/or accompanying package inserts ("Documentation"). No claim of suitability for use in applications regulated by FDA is made. The warranty provided herein is valid only when used by properly trained individuals. Unless otherwise stated in the Documentation, this warranty is limited to one year from date of shipment when the Product is subjected to normal, proper and intended usage. This warranty does not extend to anyone other than the Buyer. Any model or sample furnished to Buyer is merely illustrative of the general type and quality of goods and does not represent that any Product will conform to such model or sample. NO OTHER WARRANTIES, EXPRESS OR IMPLIED, ARE GRANTED INCLUDING WITHOUT LIMITATION, IMPLIED WARRANTIES OF MERCHANTABILITY, FITNESS FOR ANY PARTICULAR PURPOSE, OR NON INFRINGEMENT. BUYER'S EXCLUSIVE REMEDY FOR NON-CONFORMING PRODUCTS DURING THE WARRANTY PERIOD IS LIMITED TO REPAIR, REPLACEMENT OF OR REFUND FOR THE NON-CONFORMING PRODUCT(S) AT SELLER'S SOLE OPTION. THERE IS NO OBLIGATION TO REPAIR, REPLACE OR REFUND FOR PRODUCTS AS THE RESULT OF (I) ACCIDENT, DISASTER OR EVENT OF FORCE MAJEURE, (II) MISUSE, FAULT OR NEGLIGENCE OF OR BY BUYER, (III) USE OF THE PRODUCTS IN A MANNER FOR WHICH THEY WERE NOT DESIGNED, OR (IV) IMPROPER STORAGE AND HANDLING OF THE PRODUCTS. Unless otherwise expressly stated on the Product or in the documentation accompanying the Product, the Product is intended for research only and is not to be used for any other purpose, including without limitation, unauthorized commercial uses, in vitro diagnostic uses, ex vivo or in vivo therapeutic uses, or any type of consumption by or application to human or animals.