

Mouse Hematopoietic Lineage Antibody Cocktail, eFluor™ 450, eBioscience™

Product Details	
Size	50 Tests
Species Reactivity	Mouse
Published Species	Mouse, Human
Host/Isotype	Rat
Class	Cocktail
Type	Antibody
Conjugate	eFluor™ 450
Excitation/Emission Max	405/445 nm
Form	Liquid
Concentration	20 µL/Test
Purification	Affinity chromatography
Storage buffer	PBS, pH 7.2, with 0.2% BSA
Contains	0.09% sodium azide
Storage conditions	4°C, store in dark, DO NOT FREEZE!
RRID	AB_10426799

Applications	Tested Dilution	Publications
Immunohistochemistry (IHC)	-	1 Publication
Flow Cytometry (Flow)	20 µL/test	26 Publications

Product Specific Information

Description: The Mouse Hematopoietic Lineage eFluor™ 450 Cocktails contains eFluor™ 450-conjugated antibodies that can be used to identify, enrich and/or deplete cells committed to the T, B, NK, myeloid and erythroid lineages based on the expression of cell surface antigens.

This cocktail contains the following antibodies:

Anti-Mouse CD3 (17A2) eFluor™ 450

Anti-Mouse CD45R (B220) (RA3-6B2) eFluor™ 450

Anti-Mouse CD11b (M1/70) eFluor™ 450

Anti-Mouse TER-119 (TER-119) eFluor™ 450

Anti-Mouse Ly-G6 (Gr-1) (RB6-8C5) eFluor™ 450

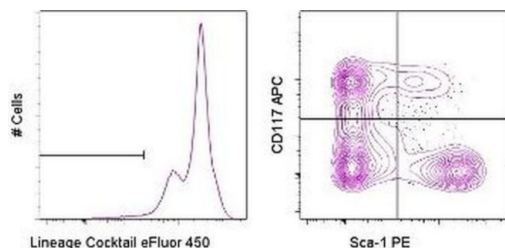
Applications Reported: The Mouse Hematopoietic Lineage eFluor™ 450 Cocktail has been reported for use in flow cytometric analysis.

Applications Tested: The Mouse Hematopoietic Lineage eFluor™ 450 Cocktail has been pre-titrated and tested by flow cytometric analysis of C57Bl/6 bone marrow cells. This can be used at 20 µL per test. A test is defined as the amount (µg) of antibody that will stain a cell sample in a final volume of 100 µL. Cell number should be determined empirically but can range

from 10⁵ to 10⁸ cells/test.

eFluor™ 450 is an alternative to Pacific Blue™. eFluor™ 450 emits at 445 nm and is excited with the Violet laser (405 nm). Please make sure that your instrument is capable of detecting this fluorochrome.

Product Images For Mouse Hematopoietic Lineage Antibody Cocktail, eFluor™ 450, eBioscience™



Mouse Hematopoietic Lineage Antibody (88-7772-72) in Flow
C57BL/6 bone marrow cells were stained with the Mouse Hematopoietic Lineage eFluor® 450 Cocktail, Anti-Mouse CD117 APC (Product # 17-1171-82) and Anti-Mouse Ly-6A/E (Sca-1) PE (Product # 12-5981-82). Viable cells in the lymphocyte gate were used for analysis. Events displayed on the right plot are gated on lineage negative events, as shown on the left histogram.

27 References

Immunohistochemistry (1)

The Journal of experimental medicine

Yeats4 drives ILC lineage commitment via activation of *Lmo4* transcription.

"88-7772 was used in Immunohistochemistry to show that the Yeats4-Lmo4 axis is required for ILC lineage commitment."

Authors: Liu B, Yang L, Zhu X, Li H, Zhu P, Wu J, Lu T, He L, Liu N, Meng S, Zhou L, Ye B, Tian Y, Fan Z

Year
2019

Species
Mouse

Flow Cytometry (26)

Cellular and molecular gastroenterology and hepatology

DR3 Regulates Intestinal Epithelial Homeostasis and Regeneration After Intestinal Barrier Injury.

"88-7772-72 was used in Flow Cytometry to establish a novel function of DR3 in IEC homeostasis and postinjury regeneration independent of its established role in innate lymphoid cells and T-helper cells."

Authors: Shimodaira Y, More SK, Hamade H, Blackwood AY, Abraham JP, Thomas LS, Miller JH, Stamps DT, Castanon SL, Jacob N, Ha CWY, Devkota S, Shih DQ, Targan SR, Michelsen KS

Year
2023

Species
Mouse

Cardiovascular research

Group 2 innate lymphoid cells protect mouse heart from myocardial infarction injury via interleukin 5, eosinophils, and dendritic cells.

"88-7772-72 was used in Flow cytometry/Cell sorting to reveal an indirect cardiac reparative role of ILC2 in post-MI hearts via the IL5, EOS, and DC mechanism."

Authors: Liu T, Meng Z, Liu J, Li J, Zhang Y, Deng Z, Luo S, Wang M, Huang Q, Zhang S, Fendt P, Devouassoux J, Li D, McKenzie ANJ, Nahrendorf M, Libby P, Guo J, Shi GP

Year
2023

Species
Mouse

[View more Flow references on thermofisher.cn](#)

More applications with references on thermofisher.cn

For Research Use Only. Not for use in diagnostic procedures. Not for resale without express authorization. Products are warranted to operate or perform substantially in conformance with published Product specifications in effect at the time of sale, as set forth in the Production documentation, specifications and/or accompanying package inserts ("Documentation"). No claim of suitability for use in applications regulated by FDA is made. The warranty provided herein is valid only when used by properly trained individuals. Unless otherwise stated in the Documentation, this warranty is limited to one year from date of shipment when the Product is subjected to normal, proper and intended usage. This warranty does not extend to anyone other than the Buyer. Any model or sample furnished to Buyer is merely illustrative of the general type and quality of goods and does not represent that any Product will conform to such model or sample. NO OTHER WARRANTIES, EXPRESS OR IMPLIED, ARE GRANTED INCLUDING WITHOUT LIMITATION, IMPLIED WARRANTIES OF MERCHANTABILITY, FITNESS FOR ANY PARTICULAR PURPOSE, OR NON INFRINGEMENT. BUYER'S EXCLUSIVE REMEDY FOR NON-CONFORMING PRODUCTS DURING THE WARRANTY PERIOD IS LIMITED TO REPAIR, REPLACEMENT OF OR REFUND FOR THE NON-CONFORMING PRODUCT(S) AT SELLER'S SOLE OPTION. THERE IS NO OBLIGATION TO REPAIR, REPLACE OR REFUND FOR PRODUCTS AS THE RESULT OF (I) ACCIDENT, DISASTER OR EVENT OF FORCE MAJEURE, (II) MISUSE, FAULT OR NEGLIGENCE OF OR BY BUYER, (III) USE OF THE PRODUCTS IN A MANNER FOR WHICH THEY WERE NOT DESIGNED, OR (IV) IMPROPER STORAGE AND HANDLING OF THE PRODUCTS. Unless otherwise expressly stated on the Product or in the documentation accompanying the Product, the Product is intended for research only and is not to be used for any other purpose, including without limitation, unauthorized commercial uses, in vitro diagnostic uses, ex vivo or in vivo therapeutic uses, or any type of consumption by or application to human or animals.