

CD3 Monoclonal Antibody (OKT3), Alexa Fluor™ 700, eBioscience™

Product Details	
Size	100 Tests
Species Reactivity	Human
Published Species	Human
Host/Isotype	Mouse / IgG2a, kappa
Recommended Isotype Control	Mouse IgG2a kappa Isotype Control (eBM2a), Alexa Fluor™ 700, eBioscience™
Class	Monoclonal
Type	Antibody
Clone	OKT3
Conjugate	Alexa Fluor™ 700
Excitation/Emission Max	696/719 nm
Form	Liquid
Concentration	5 µL/Test
Purification	Affinity chromatography
Storage buffer	PBS, pH 7.2, with BSA
Contains	0.09% sodium azide
Storage conditions	4°C, store in dark, DO NOT FREEZE!
RRID	AB_10714978

Applications	Tested Dilution	Publications
Immunohistochemistry (IHC)	-	2 Publications
Immunocytochemistry (ICC/IF)	-	4 Publications
Flow Cytometry (Flow)	5 µL (0.5 µg)/test	33 Publications
Functional Assay (Functional)	-	1 Publication
Immunomicroscopy (IM)	-	1 Publication
T-Cell Activation (TCA)	-	5 Publications
Miscellaneous PubMed (Misc)	-	2 Publications

Product Specific Information

Description: The OKT3 monoclonal antibody reacts with an epitope on the epsilon-subunit within the human CD3 complex. The OKT3 antibody has been reported to have potent immunosuppressive properties in vivo and has been proven effective in the treatment of renal, heart and liver allograft rejection. The CD3 subunits, gamma, delta, and epsilon chains, are required for proper assembly, trafficking and surface expression of the TCR complex. CD3 is expressed by thymocytes in a developmentally regulated manner and by all mature T cells. Crosslinking of TCR initiates an intracellular biochemical pathway resulting in cellular activation and proliferation.

Applications Reported: This OKT3 antibody has been reported for use in flow cytometric analysis.

Applications Tested: This OKT3 antibody has been pre-titrated and tested by flow cytometric analysis of normal human

peripheral blood cells. This can be used at 5 μ L (0.5 μ g) per test. A test is defined as the amount (μ g) of antibody that will stain a cell sample in a final volume of 100 μ L. Cell number should be determined empirically but can range from 10^5 to 10^8 cells /test.

Alexa Fluor® 700 emits at 723 nm and can be excited with the red laser (633 nm). Most instruments will require a 685 LP mirror and 710/20 filter. Please make sure that your instrument is capable of detecting this fluorochrome.

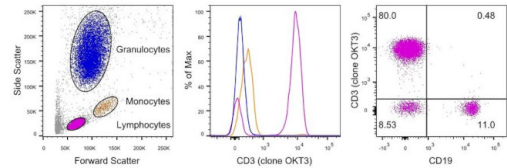
Excitation: 633-647 nm; Emission: 723 nm; Laser: Red Laser.

Filtration: 0.2 μ m post-manufacturing filtered.

Product Images For CD3 Monoclonal Antibody (OKT3), Alexa Fluor™ 700, eBioscience™

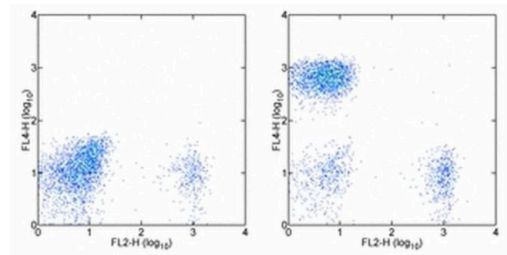
CD3 Antibody (56-0037-42)

Staining of human peripheral blood cells. As expected based on known relative expression patterns, CD3 clone OKT3 stains a subset of lymphocytes (T cells) and does not stain monocytes and granulocytes (middle plot). Additional analysis of lymphocytes shows that CD3 clone OKT3 does not stain any CD19+ B cells (right plot). Details: Normal human whole blood was surface stained with CD3 (clone OKT3) and CD19 (clone HIB19). After staining, red blood cells were lysed using 1-step Fix/Lyse Buffer. Cells in the lymphocyte (purple histogram), monocyte (orange histogram), or granulocyte (blue histogram) gates were used to compare CD3 staining (middle plot). Cells in the lymphocyte gate were used to compare CD3 and CD19 staining (right plot). {RE}



CD3 Antibody (56-0037-42) in Flow

Staining of normal human peripheral blood cells with Anti-Human CD19 PE (Product # 12-0199-80) and Mouse IgG2a K Isotype Control Alexa Fluor® 700 (Product # 56-4724-80) (left) or Anti-Human CD3 Alexa Fluor® 700 (right). Cells in the lymphocyte gate were used for analysis.



View more figures on thermofisher.cn

Immunohistochemistry (2)

<p>Journal of Cancer</p> <p>IL-2 enhanced MHC class I expression in papillary thyroid cancer with Hashimoto's thyroiditis overcomes immune escape <i>in vitro</i>.</p> <p>"Published figure using CD3 monoclonal antibody (Product # 56-0037-42) in Immunohistochemistry"</p> <p>Authors: Hu JQ,Lei BW,Wen D,Ma B,Zhang TT,Lu ZW,Wei WJ,Wang YL,Wang Y,Li DS, Ji QH,Liao T</p>	<p>Year</p> <p>2020</p>
<p>PLoS medicine</p> <p>Expansion of regulatory T cells in patients with Langerhans cell histiocytosis.</p> <p>"Published figure using CD3 monoclonal antibody (Product # 56-0037-42) in Immunohistochemistry"</p> <p>Authors: Senechal B,Elain G,Jeziorski E,Grondin V,Patey-Mariaud de Serre N,Jaubert F,Beldjord K,Lellouch A,Glorion C,Zerah M,Mary P,Barkaoui M,Emile JF,Boccon-Gibod L,Josset P,Debré M,Fischer A,Donadieu J,Geissmann F</p>	<p>Year</p> <p>2007</p>

Immunocytochemistry (4)

<p>Cell reports</p> <p>TCR and Inflammatory Signals Tune Human MAIT Cells to Exert Specific Tissue Repair and Effector Functions.</p> <p>"Published figure using CD3 monoclonal antibody (Product # 56-0037-42) in Immunocytochemistry"</p> <p>Authors: Leng T,Akther HD,Hackstein CP,Powell K,King T,Friedrich M,Christoforidou Z,McCuaig S,Neyazi M,Arancibia-Cárcamo CV,Hagel J,Powrie F,Peres RS,Millar V,Ebner D,Lamichhane R,Ussher J,Hinks TSC,Marchi E,Willberg C,Klenerman P</p>	<p>Year</p> <p>2019</p>
<p>The Journal of clinical investigation</p> <p>Astrocytic tight junctions control inflammatory CNS lesion pathogenesis.</p> <p>"Published figure using CD3 monoclonal antibody (Product # 56-0037-42) in Immunofluorescence"</p> <p>Authors: Horng S,Therattil A,Moyon S,Gordon A,Kim K,Argaw AT,Hara Y,Mariani JN,Sawai S,Flodby P,Crandall ED,Borok Z,Sofroniew MV,Chapouly C,John GR</p>	<p>Year</p> <p>2017</p>

[View more ICC/IF references on thermofisher.cn](#)

More applications with references on thermofisher.cn

- Flow (33)
- Functional (1)
- IM (1)
- TCA (5)
- Misc (2)

For Research Use Only. Not for use in diagnostic procedures. Not for resale without express authorization. Products are warranted to operate or perform substantially in conformance with published Product specifications in effect at the time of sale, as set forth in the Production documentation, specifications and/or accompanying package inserts ("Documentation"). No claim of suitability for use in applications regulated by FDA is made. The warranty provided herein is valid only when used by properly trained individuals. Unless otherwise stated in the Documentation, this warranty is limited to one year from date of shipment when the Product is subjected to normal, proper and intended usage. This warranty does not extend to anyone other than the Buyer. Any model or sample furnished to Buyer is merely illustrative of the general type and quality of goods and does not represent that any Product will conform to such model or sample. NO OTHER WARRANTIES, EXPRESS OR IMPLIED, ARE GRANTED INCLUDING WITHOUT LIMITATION, IMPLIED WARRANTIES OF MERCHANTABILITY, FITNESS FOR ANY PARTICULAR PURPOSE, OR NON-INFRINGEMENT. BUYER'S EXCLUSIVE REMEDY FOR NON-CONFORMING PRODUCTS DURING THE WARRANTY PERIOD IS LIMITED TO REPAIR, REPLACEMENT OF OR REFUND FOR THE NON-CONFORMING PRODUCT(S) AT SELLER'S SOLE OPTION. THERE IS NO OBLIGATION TO REPAIR, REPLACE OR REFUND FOR PRODUCTS AS THE RESULT OF (I) ACCIDENT, DISASTER OR EVENT OF FORCE MAJEURE, (II) MISUSE, FAULT OR NEGLIGENCE OF OR BY BUYER, (III) USE OF THE PRODUCTS IN A MANNER FOR WHICH THEY WERE NOT DESIGNED, OR (IV) IMPROPER STORAGE AND HANDLING OF THE PRODUCTS. Unless otherwise expressly stated on the Product or in the documentation accompanying the Product, the Product is intended for research only and is not to be used for any other purpose, including without limitation, unauthorized commercial uses, in vitro diagnostic uses, ex vivo or in vivo therapeutic uses, or any type of consumption by or application to human or animals.