

Human Hematopoietic Lineage Antibody Cocktail, eFluor™ 450, eBioscience™

Product Details

Size	50 Tests
Species Reactivity	Human
Published Species	Human
Host/Isotype	Mouse
Class	Cocktail
Type	Antibody
Clone	RPA-2.10, OKT3, 61D3, CB16, HIB19, TULY56, HIR2
Conjugate	eFluor™ 450
Excitation/Emission Max	405/445 nm
Form	Liquid
Concentration	20 µL/Test
Purification	Affinity chromatography
Storage buffer	PBS, pH 7.2, with BSA
Contains	0.09% sodium azide
Storage conditions	4°C, store in dark, DO NOT FREEZE!
RRID	AB_2642588

Applications

Tested Dilution

Publications

Flow Cytometry (Flow)	20 µL/test	1 Publication
-----------------------	------------	---------------

Product Specific Information

Description: The Human Hematopoietic Lineage eFluor™ 450 Cocktail contains eFluor™ 450-conjugated antibodies that can be used to identify, enrich and/or deplete cells committed to the T, B, NK, myeloid and erythroid lineages based on their expression of cell surface antigens.

This cocktail contains the following antibodies:

Anti-Human CD2 (RPA-2.10) eFluor™ 450

Anti-Human CD3 (OKT3) eFluor™ 450

Anti-Human CD14 (61D3) eFluor™ 450

Anti-Human CD16 (CB16) eFluor™ 450

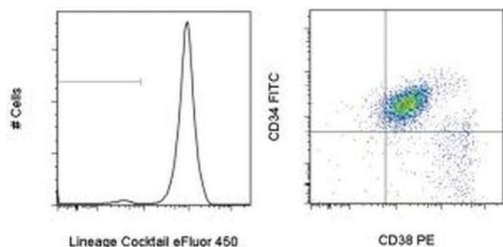
Anti-Human CD19 (HIB19) eFluor™ 450

Anti-Human CD56 (TULY56) eFluor™ 450

Anti-Human CD235a (HIR2) eFluor™ 450

Applications Reported: Human Hematopoietic Lineage eFluor™ 450 Cocktail has been reported for use in flow cytometric analysis.

eFluor™ 450 is an alternative to Pacific Blue™. eFluor™ 450 emits at 445 nm and is excited with the Violet laser (405 nm). Please make sure that your instrument is capable of detecting this fluorochrome.



Normal human peripheral blood cells were stained with Anti-Human CD34 FITC (Product # 11-0349-42), Anti-Human CD38 PE (Product # 12-0388-42), and the Human Hematopoietic Lineage eFluor® 450 Cocktail. Total viable cells were used for analysis. Cells in the right dot plot are gated on lineage negative events, depicted in the left histogram.

For Research Use Only. Not for use in diagnostic procedures. Not for or resale without express authorization. Products are warranted to operate or perform substantially in conformance with published Product specifications in effect at the time of sale, as set forth in the Production documentation, and specifications and/or accompanying package inserts ("Documentation"). No claim of suitability for use in applications regulated by FDA is made. The warranty provided herein is valid only when used by properly trained individuals. Unless otherwise stated in the Documentation, this warranty is limited to one year from date of shipment when the Product is subjected to normal, proper and intended usage. This warranty does not extend to anyone other than the Buyer. Any model or sample furnished to Buyer is merely illustrative of the general type and quality of goods and does not represent that any Product will conform to such model or sample. NO OTHER WARRANTIES, EXPRESS OR IMPLIED, ARE GRANTED INCLUDING WITHOUT LIMITATION, IMPLIED WARRANTIES OF MERCHANTABILITY, FITNESS FOR ANY PARTICULAR PURPOSE, OR NON-INFRINGEMENT. BUYER'S EXCLUSIVE REMEDY FOR NON-CONFORMING PRODUCTS DURING THE WARRANTY PERIOD IS LIMITED TO REPAIR, REPLACEMENT OF OR REFUND FOR THE NON-CONFORMING PRODUCT(S) AT SELLER'S SOLE OPTION. THERE IS NO OBLIGATION TO REPAIR, REPLACE OR REFUND FOR PRODUCTS AS THE RESULT OF (I) ACCIDENT, DISASTER OR EVENT OF FORCE MAJEURE, (II) MISUSE, FAULT OR NEGLIGENCE OF OR BY BUYER, (III) USE OF THE PRODUCTS IN A MANNER FOR WHICH THEY WERE NOT DESIGNED, OR (IV) IMPROPER STORAGE AND HANDLING OF THE PRODUCTS. Unless otherwise expressly stated on the Product or in the documentation accompanying the Product, the Product is intended for research only and is not to be used for any other purpose, including without limitation, unauthorized commercial uses, in vitro diagnostic uses, ex vivo or in vivo therapeutic uses, or any type of consumption by or application to human or animals.