

# Human Hematopoietic Lineage Antibody Cocktail, APC, eBioscience™

Product Details	
Size	50 Tests
Species Reactivity	Human
Published Species	Human
Host/Isotype	Mouse
Class	Cocktail
Type	Antibody
Clone	RPA-2.10, OKT3, 61D3, CB16, HIB19, TULY56, HIR2
Conjugate	APC
Excitation/Emission Max	651/660 nm
Form	Liquid
Concentration	20 µL/Test
Purification	Affinity chromatography
Storage buffer	PBS, pH 7.2, with BSA
Contains	0.09% sodium azide
Storage conditions	4°C, store in dark, DO NOT FREEZE!
RRID	AB_2043865

Applications	Tested Dilution	Publications
Flow Cytometry (Flow)	20 µL/test	5 Publications

## Product Specific Information

Description: The Human Hematopoietic Lineage APC Cocktail contains APC-conjugated antibodies that can be used to identify, enrich and/or deplete cells committed to the T, B, NK, myeloid and erythroid lineages based on their expression of cell surface antigens.

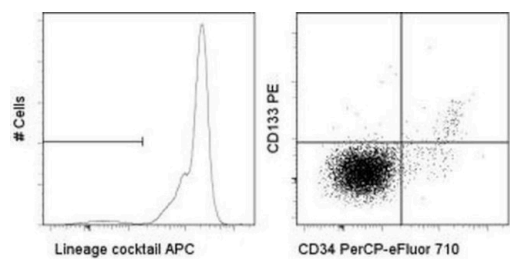
This cocktail contains the following antibodies:

- Anti-Human CD2 (RPA-2.10) APC
- Anti-Human CD3 (OKT3) APC
- Anti-Human CD14 (61D3) APC
- Anti-Human CD16 (CB16) APC
- Anti-Human CD19 (HIB19) APC
- Anti-Human CD56 (TULY56) APC
- Anti-Human CD235a (HIR2) APC

Applications Reported: The Human Hematopoietic Lineage APC Cocktail has been reported for use in flow cytometric analysis.

Applications Tested: The Human Hematopoietic Lineage APC Cocktail has been pre-titrated and tested by flow cytometric analysis of normal human peripheral blood cells. This can be used at 20 µL per test. A test is defined as the amount (µg) of antibody that will stain a cell sample in a final volume of 100 µL. Cell number should be determined empirically but can range from 10<sup>5</sup> to 10<sup>8</sup> cells/test.

Product Images For Human Hematopoietic Lineage Antibody Cocktail, APC, eBioscience™



**Human Hematopoietic Lineage Antibody (22-7776-72) in Flow**  
Normal human peripheral blood cells were stained with Anti-Human CD34 PerCP-eFluor® 710 (Product # 46-0349-42), Anti-Human CD133 PE and the Human Hematopoietic Lineage APC Cocktail. Cells in the lymphocyte gate were used for analysis. Cells in the right dot plot are gated on lineage negative events, depicted in the left histogram.

5 References

Flow Cytometry (5)

<p>STAR protocols</p> <p><b>Characterizing diversity among human oral stem-like cancer cells using flow cytometry.</b></p> <p>"22-7776-72 was used in Flow Cytometry to develop the protocol of flow cytometry for characterizing diversity among oral stem-like cancer cells (SLCCs) using CD44, CD24, and aldehyde dehydrogenase (ALDH) in oral tumors."</p> <p>Authors: Ghosh S,Mitra P,Saha U,Vipparthi K,Singh S</p>	<p>Year 2022</p> <p>Species Human</p> <p>Dilution 1:5</p>
<p>iScience</p> <p><b>Emergence of hybrid states of stem-like cancer cells correlates with poor prognosis in oral cancer.</b></p> <p>"22-7776-72 was used in Flow cytometry/Cell sorting to describe the phenotypic-composition of heterogeneous subpopulations critical for global tumor behavior in oral cancer; which may provide prerequisite knowledge for treatment strategies."</p> <p>Authors: Vipparthi K,Hari K,Chakraborty P,Ghosh S,Patel AK,Ghosh A,Biswas NK,Sharan R,Arun P,Jolly MK,Singh S</p>	<p>Year 2022</p> <p>Species Human</p>

[View more Flow references on thermofisher.cn](#)

More applications with references on thermofisher.cn

For Research Use Only. Not for use in diagnostic procedures. Not for resale without express authorization. Products are warranted to operate or perform substantially in conformance with published Product specifications in effect at the time of sale, as set forth in the Production documentation, specifications and/or accompanying package inserts ("Documentation"). No claim of suitability for use in applications regulated by FDA is made. The warranty provided herein is valid only when used by properly trained individuals. Unless otherwise stated in the Documentation, this warranty is limited to one year from date of shipment when the Product is subjected to normal, proper and intended usage. This warranty does not extend to anyone other than the Buyer. Any model or sample furnished to Buyer is merely illustrative of the general type and quality of goods and does not represent that any Product will conform to such model or sample. NO OTHER WARRANTIES, EXPRESS OR IMPLIED, ARE GRANTED INCLUDING WITHOUT LIMITATION, IMPLIED WARRANTIES OF MERCHANTABILITY, FITNESS FOR ANY PARTICULAR PURPOSE, OR NON-INFRINGEMENT. BUYER'S EXCLUSIVE REMEDY FOR NON-CONFORMING PRODUCTS DURING THE WARRANTY PERIOD IS LIMITED TO REPAIR, REPLACEMENT OF OR REFUND FOR THE NON-CONFORMING PRODUCT(S) AT SELLER'S SOLE OPTION. THERE IS NO OBLIGATION TO REPAIR, REPLACE OR REFUND FOR PRODUCTS AS THE RESULT OF (i) ACCIDENT, DISASTER OR EVENT OF FORCE MAJEURE, (ii) MISUSE, FAULT OR NEGLIGENCE OF OR BY BUYER, (iii) USE OF THE PRODUCTS IN A MANNER FOR WHICH THEY WERE NOT DESIGNED, OR (iv) IMPROPER STORAGE AND HANDLING OF THE PRODUCTS. Unless otherwise expressly stated on the Product or in the documentation accompanying the Product, the Product is intended for research only and is not to be used for any other purpose, including without limitation, unauthorized commercial uses, in vitro diagnostic uses, ex vivo or in vivo therapeutic uses, or any type of consumption by or application to human or animals.