

Ki-67 Monoclonal Antibody (SolA15), FITC, eBioscience™

Product Details	
Size	25 µg
Species Reactivity	Dog, Cynomolgus monkey, Human, Mouse, Non-human primate, Rat
Published Species	Rat, Mouse, Human, Guinea pig
Host/Isotype	Rat / IgG2a, kappa
Recommended Isotype Control	Rat IgG2a kappa Isotype Control (eBR2a), FITC, eBioscience™
Class	Monoclonal
Type	Antibody
Clone	SolA15
Conjugate	FITC
Excitation/Emission Max	498/517 nm
Form	Liquid
Concentration	0.5 mg/mL
Purification	Affinity chromatography
Storage buffer	PBS, pH 7.2
Contains	0.09% sodium azide
Storage conditions	4°C, store in dark, DO NOT FREEZE!
RRID	AB_11151689

Applications	Tested Dilution	Publications
Western Blot (WB)	-	1 Publication
Immunohistochemistry (IHC)	Assay-Dependent	70 Publications
Immunohistochemistry (Paraffin) (IHC (P))	-	3 Publications
Immunohistochemistry (PFA fixed) (IHC (PFA))	-	2 Publications
Immunohistochemistry (Frozen) (IHC (F))	-	1 Publication
Immunocytochemistry (ICC/IF)	10 µg/mL	45 Publications
Flow Cytometry (Flow)	0.25 µg/test	113 Publications
Functional Assay (Functional)	-	1 Publication
Miscellaneous PubMed (Misc)	-	1 Publication

Product Specific Information

Description: The monoclonal antibody SolA15 recognizes mouse and rat Ki-67, a 300 kDa nuclear protein. Ki-67 is present during all active phases of the cell cycle (G1, S, G2, and mitosis), but is absent from resting cells (G0). Ki-67 is detected within the nucleus during interphase but redistributes to the chromosomes during mitosis. Ki-67 is used as a marker for determining the growth fraction of a given population of cells. In studies of tumor cells, the "Ki-67 labeling index" refers to the number of Ki-67 positive cells within the population and this is used to predict outcome of particular cancer types. Ki-67 has been shown to interact with the DNA-bound protein chromobox protein homolog 3 (CBX3) (heterochromatin).

The SolA15 antibody also recognizes human, non-human primate and canine Ki-67.

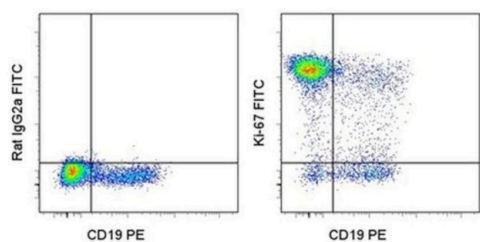
Applications Reported: This SolA15 antibody has been reported for use in intracellular staining followed by flow cytometric analysis, immunohistochemical staining, and immunocytochemistry.

Applications Tested: This SolA15 antibody has been tested by immunocytochemistry on fixed and permeabilized OLN93 cells at less than or equal to 10 µg/mL. It has also been tested by intracellular staining and flow cytometric analysis of stimulated mouse splenocytes using the Foxp3/Transcription Factor Staining Buffer Set (Product # 00-5523-00) and protocol. For flow application this can be used at less than or equal to 0.25 µg per test. A test is defined as the amount (µg) of antibody that will stain a cell sample in a final volume of 100 µL. Cell number should be determined empirically but can range from 10⁵ to 10⁸ cells/test. It is recommended that the antibody be carefully titrated for optimal performance in the assay of interest.

Excitation: 488 nm; Emission: 520 nm; Laser: Blue Laser.

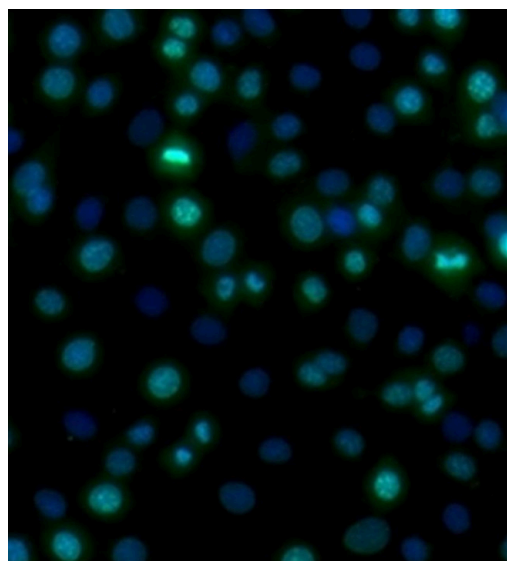
Filtration: 0.2 µm post-manufacturing filtered.

Product Images For Ki-67 Monoclonal Antibody (SolA15), FITC, eBioscience™



Ki-67 Antibody (11-5698-80) in Flow

C57Bl/6 splenocytes stimulated for 2 days with plate-bound Anti-Mouse CD3e Functional Grade Purified (Product # 16-0031-82) were surface stained with Anti-Mouse CD19 PE (Product # 12-0193-82). Cells were then fixed and permeabilized using the Foxp3 Staining Buffer Set (Product # 00-5523-00) and stained intracellularly with 0.125 µg of Rat IgG2a K Isotype Control FITC (Product # 11-4321-42) (left) or 0.125 µg of Anti-Mouse/Rat Ki-67 FITC (right).



Ki-67 Antibody (11-5698-80) in ICC/IF

Immunocytochemistry of fixed and permeabilized OLN93 cells stained with 10 µg/mL of Anti-Mouse/Rat Ki-67 FITC and counterstained with DAPI. Dividing cells are co-stained with Ki-67 (green) and DAPI (blue).

[View more figures on thermofisher.cn](http://thermofisher.cn)

Western Blot (1)

eLife

The cell proliferation antigen Ki-67 organises heterochromatin.

"Published figure using Ki-67 monoclonal antibody (Product # 11-5698-82) in Western Blot"

Authors: Sobecki M, Mrouj K, Camasses A, Parisis N, Nicolas E, Lières D, Gerbe F, Prieto S, Krasinska L, David A, Eguren M, Birling MC, Urbach S, Hem S, Déjardin J, Malumbres M, Jay P, Dulic V, Lafontaine DLj, Feil R, Fisher D

Year
2016

Species
Human
Mouse

Immunohistochemistry (70)

Cellular and molecular life sciences : CMLS

Mesenchyme-derived vertebrate lonesome kinase controls lung organogenesis by altering the matrisome.

"11-5698-82 was used in Immunohistochemistry-immunofluorescence to support a role for mesenchyme-derived VLK in lung development through regulation of matrix dynamics and the resulting modulation of alveolar epithelial cell differentiation."

Authors: Brüttsch SM, Madzharova E, Pantasis S, Wüstemann T, Gurri S, Steenbock H, Gazdhar A, Kuhn G, Angel P, Bellusci S, Brinckmann J, Auf dem Keller U, Werner S, Bordoli MR

Year
2023

Species
Mouse

Scientific reports

Application of an instructive hydrogel accelerates re-epithelialization of xenografted human skin wounds.

"Published figure using Ki-67 monoclonal antibody (Product # 11-5698-82) in Immunohistochemistry"

Authors: Sparks HD, Mandla S, Vizely K, Rosin N, Radisic M, Biernaskie J

Year
2022

[View more IHC references on thermofisher.cn](#)

Immunohistochemistry (Paraffin) (3)

Frontiers in oncology

Radiation Induced Metabolic Alterations Associate With Tumor Aggressiveness and Poor Outcome in Glioblastoma.

"Published figure using Ki-67 monoclonal antibody (Product # 11-5698-82) in Immunocytochemistry"

Authors: Gupta K, Vuckovic I, Zhang S, Xiong Y, Carlson BL, Jacobs J, Olson I, Petterson XM, Macura SI, Sarkaria J, Burns TC

Year
2020

[View more IHC \(P\) references on thermofisher.cn](#)

More applications with references on thermofisher.cn

IHC (PFA) (2)

IHC (F) (1)

ICC/IF (45)

Flow (113)

Functional (1)

Misc (1)

For Research Use Only. Not for use in diagnostic procedures. Not for resale without express authorization. Products are warranted to operate or perform substantially in conformance with published Product specifications in effect at the time of sale, as set forth in the Production documentation, specifications and/or accompanying package inserts ("Documentation"). No claim of suitability for use in applications regulated by FDA is made. The warranty provided herein is valid only when used by properly trained individuals. Unless otherwise stated in the Documentation, this warranty is limited to one year from date of shipment when the Product is subjected to normal, proper and intended usage. This warranty does not extend to anyone other than the Buyer. Any model or sample furnished to Buyer is merely illustrative of the general type and quality of goods and does not represent that any Product will conform to such model or sample. NO OTHER WARRANTIES, EXPRESS OR IMPLIED, ARE GRANTED INCLUDING WITHOUT LIMITATION, IMPLIED WARRANTIES OF MERCHANTABILITY, FITNESS FOR ANY PARTICULAR PURPOSE, OR NON-INFRINGEMENT. BUYER'S EXCLUSIVE REMEDY FOR NON-CONFORMING PRODUCTS DURING THE WARRANTY PERIOD IS LIMITED TO REPAIR, REPLACEMENT OF OR REFUND FOR THE NON-CONFORMING PRODUCT(S) AT SELLER'S SOLE OPTION. THERE IS NO OBLIGATION TO REPAIR, REPLACE OR REFUND FOR PRODUCTS AS THE RESULT OF (I) ACCIDENT, DISASTER OR EVENT OF FORCE MAJEURE, (II) MISUSE, FAULT OR NEGLIGENCE OF OR BY BUYER, (III) USE OF THE PRODUCTS IN A MANNER FOR WHICH THEY WERE NOT DESIGNED, OR (IV) IMPROPER STORAGE AND HANDLING OF THE PRODUCTS. Unless otherwise expressly stated on the Product or in the documentation accompanying the Product, the Product is intended for research only and is not to be used for any other purpose, including without limitation, unauthorized commercial uses, in vitro diagnostic uses, ex vivo or in vivo therapeutic uses, or any type of consumption by or application to human or animals.