

CD25 Monoclonal Antibody (BC96), APC, eBioscience™

Product Details	
Size	25 Tests
Species Reactivity	Human
Published Species	Baboon, Human, Mouse
Host/Isotype	Mouse / IgG1, kappa
Recommended Isotype Control	Mouse IgG1 kappa Isotype Control (P3.6.2.8.1), APC, eBioscience™
Class	Monoclonal
Type	Antibody
Clone	BC96
Conjugate	APC
Excitation/Emission Max	651/660 nm
Form	Liquid
Concentration	5 µL/Test
Purification	Affinity chromatography
Storage buffer	PBS, pH 7.2, with BSA
Contains	0.09% sodium azide
Storage conditions	4°C, store in dark, DO NOT FREEZE!
RRID	AB_1582220

Applications	Tested Dilution	Publications
Flow Cytometry (Flow)	5 µL (0.125 µg)/test	49 Publications

Product Specific Information

Description: The BC96 monoclonal antibody reacts with human CD25, the 55 kDa interleukin-2 receptor alpha chain (IL-2Ralpha). CD25 is expressed by early progenitors of T and B lineage as well as by activated mature T and B lymphocytes. By itself, CD25 binds IL-2 only with low affinity. However, CD25 associates with CD122 (IL-2 receptor beta chain) and CD132 (common gamma chain) to form the high affinity IL-2 receptor. CD25 plays a role in lymphocyte differentiating and activation/proliferation.

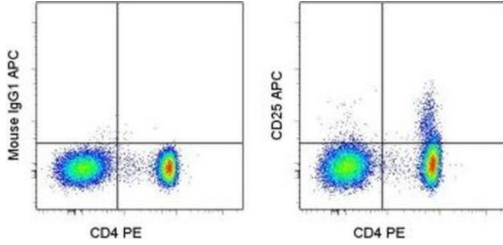
Applications Reported: The BC96 antibody has been reported for use in flow cytometric analysis.

Applications Tested: This BC96 antibody has been pre-titrated and tested by flow cytometric analysis of normal human peripheral blood cells. This can be used at 5 µL (0.125 µg) per test. A test is defined as the amount (µg) of antibody that will stain a cell sample in a final volume of 100 µL. Cell number should be determined empirically but can range from 10⁵ to 10⁸ cells/test.

Excitation: 633-647 nm; Emission: 660 nm; Laser: Red Laser.

Filtration: 0.2 µm post-manufacturing filtered.

Product Images For CD25 Monoclonal Antibody (BC96), APC, eBioscience™



CD25 Antibody (17-0259-41) in Flow

Staining of normal human peripheral blood cells with Anti-Human CD4 PE (Product # 12-0049-42) and Mouse IgG1 kappa Isotype Control APC (Product # 17-4714-81) (left) or Anti-Human CD25 APC (right). Cells in the lymphocyte gate were used for analysis.

49 References

Flow Cytometry (49)

Oncology research

Biological and molecular studies on specific immune cells treated with checkpoint inhibitors for the thera-personal approach of breast cancer patients (*ex-vivo* study).

"17-0259-42 was used in Flow Cytometry to optimize dendritic cell (DC)-based immunotherapy for breast cancer (BC) by co-culturing immune cells (DCs, T cells, tumor-infiltrating lymphocytes, and tumor-infiltrating DCs) treated with anti-PD1 and anti-CTLA4 monoclonal antibodies with autologous breast cancer cells (BCCs), leading to significant upregulation of activation markers on immune cells, downregulation of regulatory T cell markers and key cancer-related genes in BCCs, and changes in protein"

Authors: El-Houseini ME, Arafat MS, El-Husseiny AM, Kasem IM, Kamel MM, El-Habashy AH, Khafagy MM, Radwan EM, Helal MH, Abdellateif MS

Year
2023

Species
Human

Frontiers in immunology

Advanced immunophenotyping: A powerful tool for immune profiling, drug screening, and a personalized treatment approach.

"17-0259-42 was used in Flow cytometry/Cell sorting to investigate the potential of multi-parameter spectral flow cytometry for the identification of patients suffering from autoimmune diseases and its power as an evaluation tool for in vitro drug screening approaches (advanced immunophenotyping)."

Authors: Preglej T, Brinkmann M, Steiner G, Aletaha D, Göschl L, Bonelli M

Year
2023

Species
Human

[View more Flow references on thermofisher.cn](#)

More applications with references on thermofisher.cn

For Research Use Only. Not for use in diagnostic procedures. Not for resale without express authorization. Products are warranted to operate or perform substantially in conformance with published Product specifications in effect at the time of sale, as set forth in the Production documentation, specifications and/or accompanying package inserts ("Documentation"). No claim of suitability for use in applications regulated by FDA is made. The warranty provided herein is valid only when used by properly trained individuals. Unless otherwise stated in the Documentation, this warranty is limited to one year from date of shipment when the Product is subjected to normal, proper and intended usage. This warranty does not extend to anyone other than the Buyer. Any model or sample furnished to Buyer is merely illustrative of the general type and quality of goods and does not represent that any Product will conform to such model or sample. NO OTHER WARRANTIES, EXPRESS OR IMPLIED, ARE GRANTED INCLUDING WITHOUT LIMITATION, IMPLIED WARRANTIES OF MERCHANTABILITY, FITNESS FOR ANY PARTICULAR PURPOSE, OR NON-INFRINGEMENT. BUYER'S EXCLUSIVE REMEDY FOR NON-CONFORMING PRODUCTS DURING THE WARRANTY PERIOD IS LIMITED TO REPAIR, REPLACEMENT OF OR REFUND FOR THE NON-CONFORMING PRODUCT(S) AT SELLER'S SOLE OPTION. THERE IS NO OBLIGATION TO REPAIR, REPLACE OR REFUND FOR PRODUCTS AS THE RESULT OF (I) ACCIDENT, DISASTER OR EVENT OF FORCE MAJEURE, (II) MISUSE, FAULT OR NEGLIGENCE OF OR BY BUYER, (III) USE OF THE PRODUCTS IN A MANNER FOR WHICH THEY WERE NOT DESIGNED, OR (IV) IMPROPER STORAGE AND HANDLING OF THE PRODUCTS. Unless otherwise expressly stated on the Product or in the documentation accompanying the Product, the Product is intended for research only and is not to be used for any other purpose, including without limitation, unauthorized commercial uses, in vitro diagnostic uses, ex vivo or in vivo therapeutic uses, or any type of consumption by or application to human or animals.