

# Rat IgG2a kappa Isotype Control (eBR2a), PE, eBioscience™

## Product Details

Size	100 µg
Host/Isotype	Rat / IgG2a, kappa
Class	Monoclonal
Type	Isotype Control
Clone	eBR2a
Conjugate	PE
Excitation/Emission Max	565/576 nm
Form	Liquid
Concentration	0.2 mg/mL
Purification	Affinity chromatography
Storage buffer	PBS, pH 7.2
Contains	0.09% sodium azide
Storage conditions	4°C, store in dark, DO NOT FREEZE!
RRID	AB_470052

Applications	Tested Dilution	Publications
Immunocytochemistry (ICC/IF)	5 µg/mL	-
Flow Cytometry (Flow)	Assay-Dependent	0 Publication
Control (Ctrl)	Assay-Dependent	0 Publication

## Product Specific Information

**Description:** The monoclonal rat IgG2a, kappa is useful as an isotype control immunoglobulin.

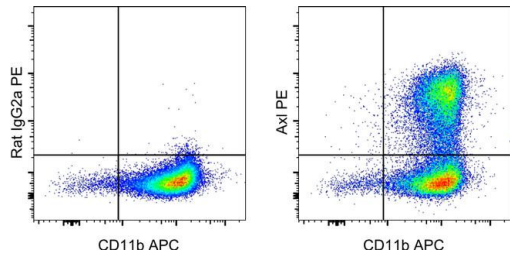
**Applications Reported:** This rat IgG2a isotype control has been reported for use in flow cytometric analysis.

**Applications Tested:** This Rat IgG2a K Isotype Control has been tested by flow cytometric analysis of mouse splenocytes and should be used at the same concentration as the experimental antibody.

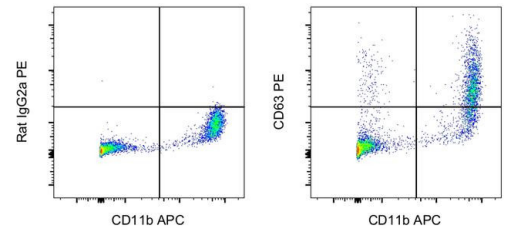
**Excitation:** 488-561 nm; **Emission:** 578 nm; **Laser:** Blue Laser, Green Laser, Yellow-Green Laser.

**Filtration:** 0.2 µm post-manufacturing filtered.

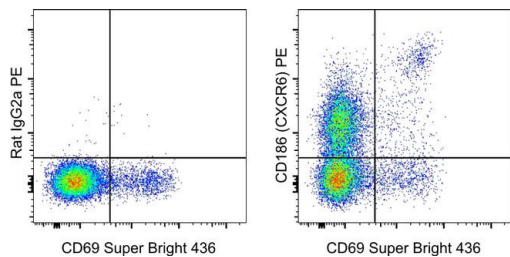
Product Images For Rat IgG2a kappa Isotype Control (eBR2a), PE, eBioscience™



**Rat IgG2a kappa Isotype Control (12-4321-82) in Flow**  
Mouse bone marrow cells were cultured in the presence of GM-CSF for 7 days, Fc blocked with CD16/CD32 Antibody (Product # 14-0161-82) and normal mouse serum, and subsequently stained with CD11b Monoclonal Antibody, APC (Product # 17-0112-82) and 0.06 µg of Rat IgG2a kappa Isotype Control, PE (Product # 12-4321-82) (left) or 0.06 µg of Axl Monoclonal Antibody, PE (right). Total viable cells were used for analysis, as determined by Fixable Viability Dye eFluor 450 (Product # 65-0863-18).



**Rat IgG2a kappa Isotype Control (12-4321-82) in Flow**  
C57BL/6 mouse resident peritoneal exudate cells were surface stained with CD11b Monoclonal Antibody, APC (Product # 17-0112-82). Cells were then stained using the Intracellular Fixation and Permeabilization Buffer Set (Product # 88-8824-00) and protocol with 0.125 µg of Rat IgG2a kappa Isotype Control, PE (Product # 12-4321-82) (left) or 0.125 µg of CD63 Monoclonal Antibody, PE (right). Total viable cells, as determined by Fixable Viability Dye eFluor® 450 (Product # 65-0863-14), were used for analysis.



**Rat IgG2a kappa Isotype Control (12-4321-82) in Flow**  
C57BL/6 mouse splenocytes were stained with CD3 Monoclonal Antibody, FITC (Product # 11-0031-82), CD69 Monoclonal Antibody, Super Bright 436 (Product # 62-0691-82) and 0.5 µg of Rat IgG2a kappa Isotype Control, PE (Product # 12-4321-82) (left) or 0.5 µg of CD186 (CXCR6) Monoclonal Antibody, PE (right). Cells in the CD3+ gate were used for analysis.

[View more figures on thermofisher.cn](#)

160 References

A generalized protocol for the induction of M2-like macrophages from mouse and rat bone marrow mononuclear cells. Biol Methods Protoc (2025)

Trajectories of microbiome-derived bile acids in early life - Insights into the progression to islet autoimmunity medRxiv (2025)

K27-linked ROR $\gamma$ t ubiquitination by Nedd4 potentiates Th17-mediated autoimmunity. J Biomed Sci (2025)

Mapping cells through time and space with moscot. Nature (2025)

IL-33-activated ILC2s induce tertiary lymphoid structures in pancreatic cancer. Nature (2025)

For Research Use Only. Not for use in diagnostic procedures. Not for resale without express authorization. Products are warranted to operate or perform substantially in conformance with published Product specifications in effect at the time of sale, as set forth in the Production documentation, specifications and/or accompanying package inserts ("Documentation"). No claim of suitability for use in applications regulated by FDA is made. The warranty provided herein is valid only when used by properly trained individuals. Unless otherwise stated in the Documentation, this warranty is limited to one year from date of shipment when the Product is subjected to normal, proper and intended usage. This warranty does not extend to anyone other than the Buyer. Any model or sample furnished to Buyer is merely illustrative of the general type and quality of goods and does not represent that any Product will conform to such model or sample. NO OTHER WARRANTIES, EXPRESS OR IMPLIED, ARE GRANTED INCLUDING WITHOUT LIMITATION, IMPLIED WARRANTIES OF MERCHANTABILITY, FITNESS FOR ANY PARTICULAR PURPOSE, OR NON-INFRINGEMENT. BUYER'S EXCLUSIVE REMEDY FOR NON-CONFORMING PRODUCTS DURING THE WARRANTY PERIOD IS LIMITED TO REPAIR, REPLACEMENT OF OR REFUND FOR THE NON-CONFORMING PRODUCT(S) AT SELLER'S SOLE OPTION. THERE IS NO OBLIGATION TO REPAIR, REPLACE OR REFUND FOR PRODUCTS AS THE RESULT OF (i) ACCIDENT, DISASTER OR EVENT OF FORCE MAJEURE, (ii) MISUSE, FAULT OR NEGLIGENCE OF OR BY BUYER, (iii) USE OF THE PRODUCTS IN A MANNER FOR WHICH THEY WERE NOT DESIGNED, OR (iv) IMPROPER STORAGE AND HANDLING OF THE PRODUCTS. Unless otherwise expressly stated on the Product or in the documentation accompanying the Product, the Product is intended for research only and is not to be used for any other purpose, including without limitation, unauthorized commercial uses, in vitro diagnostic uses, ex vivo or in vivo therapeutic uses, or any type of consumption by or application to human or animals.