

# CD150 Monoclonal Antibody (mShad150), PE, eBioscience™

Product Details	
Size	25 µg
Species Reactivity	Mouse
Published Species	Human, Mouse
Host/Isotype	Rat / IgG2b, lambda
Recommended Isotype Control	Rat IgG2b kappa Isotype Control (eB149/10H5), PE, eBioscience™
Class	Monoclonal
Type	Antibody
Clone	mShad150
Conjugate	PE
Excitation/Emission Max	565/576 nm
Form	Liquid
Concentration	0.2 mg/mL
Purification	Affinity chromatography
Storage buffer	PBS, pH 7.2
Contains	0.09% sodium azide
Storage conditions	4°C, store in dark, DO NOT FREEZE!
RRID	AB_1548767

Applications	Tested Dilution	Publications
Flow Cytometry (Flow)	0.125 µg/test	14 Publications

## Product Specific Information

Description: The mShad150 monoclonal antibody reacts with mouse CD150, an ~70 kDa transmembrane glycoprotein also known as Signaling Lymphocyte Activation Molecule (SLAM). CD150 is expressed by T cells, in particular Th1, and B cells; this expression is rapidly upregulated upon activation. Immature thymocytes and dendritic cells also express this antigen. Signaling through SLAM in T cells induces proliferation and augmentation of the interferon-gamma response. Furthermore, SLAM is thought to play a role in adhesion between the T cell and antigen-presenting cell. The mShad150 antibody has been reported to also stain the CD150+CD244-CD48-CD41- population of pluripotent hematopoietic stem cells.

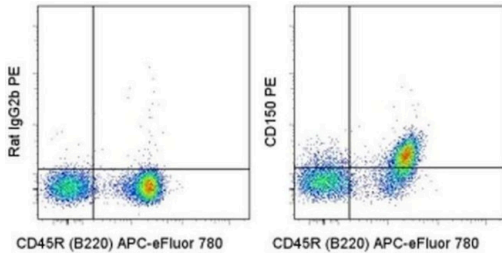
Applications Reported: This mShad150 antibody has been reported for use in flow cytometric analysis.

Applications Tested: This mShad150 antibody has been tested by flow cytometric analysis of mouse splenocytes. This can be used at less than or equal to 0.125 µg per test. A test is defined as the amount (µg) of antibody that will stain a cell sample in a final volume of 100 µL. Cell number should be determined empirically but can range from 10<sup>5</sup> to 10<sup>8</sup> cells/test. It is recommended that the antibody be carefully titrated for optimal performance in the assay of interest.

Excitation: 488-561 nm; Emission: 578 nm; Laser: Blue Laser, Green Laser, Yellow-Green Laser.

Filtration: 0.2 µm post-manufacturing filtered.

## Product Images For CD150 Monoclonal Antibody (mShad150), PE, eBioscience™



### CD150 Antibody (12-1502-80) in Flow

Staining of C57Bl/6 splenocytes with Anti-Human/Mouse CD45R (B220) APC-eFluor® 780 (Product # 47-0452-82) and 0.06 µg of Rat IgG2b K Isotype Control PE (Product # 12-4031-82) (left) or 0.06 µg of Anti-Mouse CD150 PE (right). Total viable cells were used for analysis.

[View more figures on thermofisher.cn](#)

## 14 References

### Flow Cytometry (14)

#### Aging and disease

#### Differential Effects of Endurance Exercise on Musculoskeletal and Hematopoietic Modulation in Old Mice.

"Published figure using CD150 monoclonal antibody (Product # 12-1502-82) in Flow Cytometry"

Authors: Wang Z, Sim HJ, Liu W, Kim JC, Lee JC, Kook SH, Kim SH

Year  
2024

#### iScience

#### Inhibition of SRC-mediated integrin signaling in bone marrow niche enhances hematopoietic stem cell function.

"12-1502-82 was used in Flow Cytometry to establish a role of SRC-mediated integrin signaling in the transcriptional regulation of Sdf-1."

Authors: Roy IM, Anu PV, Zaunz S, Reddi S, Giri AM, Sankar RS, Schouteden S, Huelsken J, Verfaillie CM, Khurana S

Year  
2022

Species  
Human

[View more Flow references on thermofisher.cn](#)

## More applications with references on thermofisher.cn

For Research Use Only. Not for use in diagnostic procedures. Not for resale without express authorization. Products are warranted to operate or perform substantially in conformance with published Product specifications in effect at the time of sale, as set forth in the Production documentation, specifications and/or accompanying package inserts ("Documentation"). No claim of suitability for use in applications regulated by FDA is made. The warranty provided herein is valid only when used by properly trained individuals. Unless otherwise stated in the Documentation, this warranty is limited to one year from date of shipment when the Product is subjected to normal, proper and intended usage. This warranty does not extend to anyone other than the Buyer. Any model or sample furnished to Buyer is merely illustrative of the general type and quality of goods and does not represent that any Product will conform to such model or sample. NO OTHER WARRANTIES, EXPRESS OR IMPLIED, ARE GRANTED INCLUDING WITHOUT LIMITATION, IMPLIED WARRANTIES OF MERCHANTABILITY, FITNESS FOR ANY PARTICULAR PURPOSE, OR NON-INFRINGEMENT. BUYER'S EXCLUSIVE REMEDY FOR NON-CONFORMING PRODUCTS DURING THE WARRANTY PERIOD IS LIMITED TO REPAIR, REPLACEMENT OF OR REFUND FOR THE NON-CONFORMING PRODUCT(S) AT SELLER'S SOLE OPTION. THERE IS NO OBLIGATION TO REPAIR, REPLACE OR REFUND FOR PRODUCTS AS THE RESULT OF (I) ACCIDENT, DISASTER OR EVENT OF FORCE MAJEURE, (II) MISUSE, FAULT OR NEGLIGENCE OF OR BY BUYER, (III) USE OF THE PRODUCTS IN A MANNER FOR WHICH THEY WERE NOT DESIGNED, OR (IV) IMPROPER STORAGE AND HANDLING OF THE PRODUCTS. Unless otherwise expressly stated on the Product or in the documentation accompanying the Product, the Product is intended for research only and is not to be used for any other purpose, including without limitation, unauthorized commercial uses, in vitro diagnostic uses, ex vivo or in vivo therapeutic uses, or any type of consumption by or application to human or animals.