

CD4 Monoclonal Antibody (RPA-T4), PE, eBioscience™

Product Details	
Size	25 Tests
Species Reactivity	Human
Published Species	Mouse, Human
Host/Isotype	Mouse / IgG1, kappa
Recommended Isotype Control	Mouse IgG1 kappa Isotype Control (P3.6.2.8.1), PE, eBioscience™
Class	Monoclonal
Type	Antibody
Clone	RPA-T4
Conjugate	PE
Excitation/Emission Max	565/576 nm
Form	Liquid
Concentration	5 µL/Test
Purification	Affinity chromatography
Storage buffer	PBS, pH 7.2, with BSA
Contains	0.09% sodium azide
Storage conditions	4°C, store in dark, DO NOT FREEZE!
RRID	AB_1582250

Applications	Tested Dilution	Publications
Flow Cytometry (Flow)	5 µL (0.5 µg)/test	66 Publications

Product Specific Information

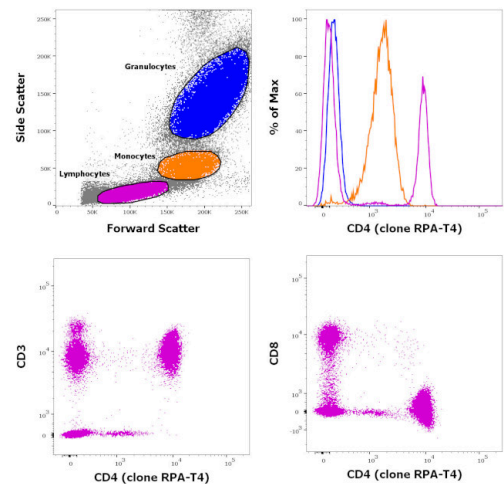
Description: The RPA-T4 monoclonal antibody reacts with human CD4, a 59 kDa cell surface receptor expressed by a majority of thymocytes, subpopulation of mature T cells (T-helper cells) and in low levels on monocytes. CD4 is a receptor for the human immunodeficiency virus (HIV). RPA-T4 blocks HIV binding and mixed lymphocyte reaction. The RPA-T4 antibody recognizes a different epitope than the OKT4 monoclonal antibody, and these antibodies do not cross-block binding to each other's respective epitopes.

Applications Reported: The RPA-T4 antibody has been reported for use in flow cytometric analysis.

Applications Tested: Has been pre-titrated and tested by flow cytometric analysis and can be used at 5 µL (0.5 µg) per test. A test is defined as the amount (µg) of antibody that will stain a cell sample in a final volume of 100 µL. Cell number should be determined empirically but can range from 10⁵ to 10⁸ cells/test. It is recommended that the antibody be carefully titrated for optimal performance in the assay of interest.

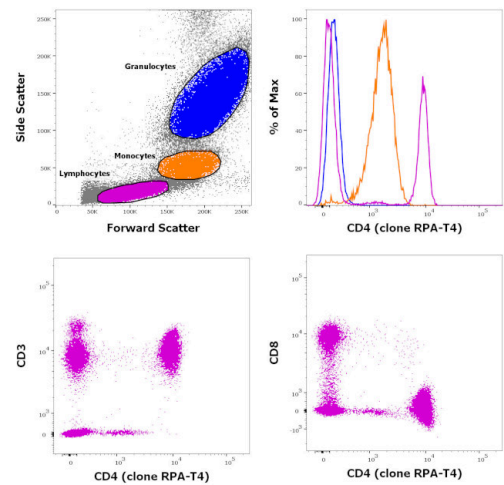
Excitation: 488-561 nm; **Emission:** 578 nm; **Laser:** Blue Laser, Green Laser, Yellow-Green Laser.

Filtration: 0.2 µm post-manufacturing filtered.



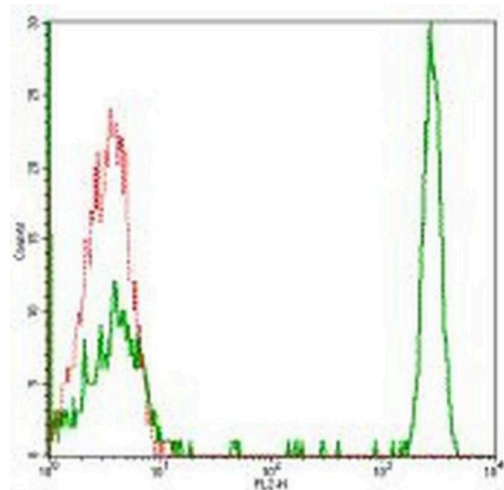
CD4 Antibody (12-0049-41)

Staining of human peripheral blood mononuclear cells with CD45 Pacific Blue, CD3 APC, CD8 PerCP and CD4 PE. As expected based on known relative expression patterns, CD4 clone RPA-T4 stains a subset of lymphocytes (pink) and monocytes (orange), but not granulocytes (blue). {RE}



CD4 Antibody (12-0049-41) in Flow

Staining of human peripheral blood mononuclear cells with CD45 Pacific Blue, CD3 APC, CD8 PerCP and CD4 PE. As expected based on known relative expression patterns, CD4 clone RPA-T4 stains a subset of lymphocytes (pink) and monocytes (orange), but not granulocytes (blue).



CD4 Antibody (12-0049-41) in Flow

Staining of normal human peripheral blood cells with Mouse IgG1 kappa Isotype Control PE (Product # 12-4714-81) (red histogram) or Anti-Human CD4 PE (green histogram).

View more figures on thermofisher.cn

Flow Cytometry (66)

Redox biology	Year 2024
IL-4 activates ULK1/Atg9a/Rab9 in asthma, NLRP3 inflammasomes, and Golgi fragmentation by increasing autophagy flux and mitochondrial oxidative stress.	
"Published figure using CD4 monoclonal antibody (Product # 12-0049-42) in Flow Cytometry"	
Authors: Xu C,Song Y,Liu W,Liu R,Bai Q,Li L,Wang C,Yan G	
British journal of pharmacology	Year 2024
Paediatric sepsis survivors are resistant to sepsis-induced long-term immune dysfunction.	
"Published figure using CD4 monoclonal antibody (Product # 12-0049-42) in Flow Cytometry"	
Authors: Colón DF,Wanderley CW,Turato WM,Borges VF,Franchin M,Castanheira FVS,Nascimento D,Prado D,Haruo Fernandes de Lima M,Volpon LC,Kavaguti SK,Carloti AP,Carmona F,Franklin BS,Cunha TM,Alves-Filho JC,Cunha FQ	

[View more Flow references on thermofisher.cn](#)

More applications with references on thermofisher.cn

For Research Use Only. Not for use in diagnostic procedures. Not for resale without express authorization. Products are warranted to operate or perform substantially in conformance with published Product specifications in effect at the time of sale, as set forth in the Production documentation, specifications and/or accompanying package inserts ("Documentation"). No claim of suitability for use in applications regulated by FDA is made. The warranty provided herein is valid only when used by properly trained individuals. Unless otherwise stated in the Documentation, this warranty is limited to one year from date of shipment when the Product is subjected to normal, proper and intended usage. This warranty does not extend to anyone other than the Buyer. Any model or sample furnished to Buyer is merely illustrative of the general type and quality of goods and does not represent that any Product will conform to such model or sample. NO OTHER WARRANTIES, EXPRESS OR IMPLIED, ARE GRANTED INCLUDING WITHOUT LIMITATION, IMPLIED WARRANTIES OF MERCHANTABILITY, FITNESS FOR ANY PARTICULAR PURPOSE, OR NON INFRINGEMENT. BUYER'S EXCLUSIVE REMEDY FOR NON-CONFORMING PRODUCTS DURING THE WARRANTY PERIOD IS LIMITED TO REPAIR, REPLACEMENT OF OR REFUND FOR THE NON-CONFORMING PRODUCT(S) AT SELLER'S SOLE OPTION. THERE IS NO OBLIGATION TO REPAIR, REPLACE OR REFUND FOR PRODUCTS AS THE RESULT OF (I) ACCIDENT, DISASTER OR EVENT OF FORCE MAJEURE, (II) MISUSE, FAULT OR NEGLIGENCE OF OR BY BUYER, (III) USE OF THE PRODUCTS IN A MANNER FOR WHICH THEY WERE NOT DESIGNED, OR (IV) IMPROPER STORAGE AND HANDLING OF THE PRODUCTS. Unless otherwise expressly stated on the Product or in the documentation accompanying the Product, the Product is intended for research only and is not to be used for any other purpose, including without limitation, unauthorized commercial uses, in vitro diagnostic uses, ex vivo or in vivo therapeutic uses, or any type of consumption by or application to human or animals.