

CD25 Monoclonal Antibody (BC96), PE, eBioscience™

Product Details	
Size	25 Tests
Species Reactivity	Human
Published Species	Human, Mouse
Host/Isotype	Mouse / IgG1, kappa
Recommended Isotype Control	Mouse IgG1 kappa Isotype Control (P3.6.2.8.1), PE, eBioscience™
Class	Monoclonal
Type	Antibody
Clone	BC96
Conjugate	PE
Excitation/Emission Max	565/576 nm
Form	Liquid
Concentration	5 µL/Test
Purification	Affinity chromatography
Storage buffer	PBS, pH 7.2, with BSA
Contains	0.09% sodium azide
Storage conditions	4° C, store in dark, DO NOT FREEZE!
RRID	AB_1659683

Applications	Tested Dilution	Publications
Flow Cytometry (Flow)	5 µL (0.125 µg)/test	41 Publications

Product Specific Information

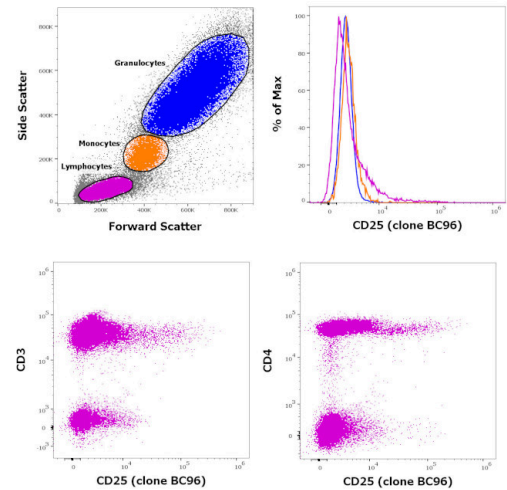
Description: The BC96 monoclonal antibody reacts with human CD25, the 55 kDa interleukin-2 receptor alpha chain (IL-2Ralpha). CD25 is expressed by early progenitors of T and B lineage as well as by activated mature T and B lymphocytes. By itself, CD25 binds IL-2 only with low affinity. However, CD25 associates with CD122 (IL-2 receptor beta chain) and CD132 (common gamma chain) to form the high affinity IL-2 receptor. CD25 plays a role in lymphocyte differentiating and activation/proliferation.

Applications Reported:The BC96 antibody has been reported for use in flow cytometric analysis.

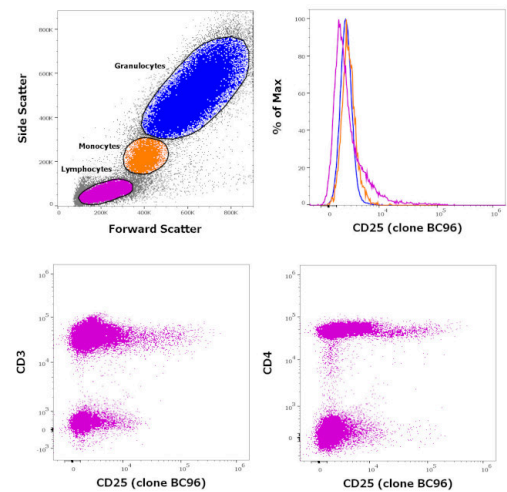
Applications Tested: Has been pre-titrated and tested and can be used at 5 µL (0.125 µg) per test. A test is defined as the amount (µg) of antibody that will stain a cell sample in a final volume of 100 µL. Cell number should be determined empirically but can range from 10^5 to 10^8 cells/test.

Excitation: 488-561 nm; Emission: 578 nm; Laser: Blue Laser, Green Laser, Yellow-Green Laser.

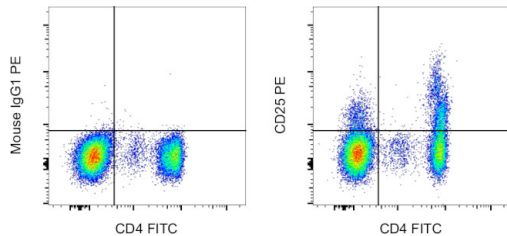
Filtration: 0.2 µm post-manufacturing filtered.



CD25 Antibody (12-0259-41)
Staining of human peripheral blood mononuclear cells with CD45 Pacific Blue, CD3 FITC, CD4 APC and CD25 PE. As expected based on known relative expression patterns, CD25 clone BC96 stains a subset of lymphocytes (pink), but not monocytes (orange) and granulocytes (blue). {RE}



CD25 Antibody (12-0259-41) in Flow
Staining of human peripheral blood mononuclear cells with CD45 Pacific Blue, CD3 FITC, CD4 APC and CD25 PE. As expected based on known relative expression patterns, CD25 clone BC96 stains a subset of lymphocytes (pink), but not monocytes (orange) and granulocytes (blue).



CD25 Antibody (12-0259-41) in Flow
Normal human peripheral blood cells were stained with CD4 Monoclonal Antibody, FITC (Product # 11-0047-42) and Mouse IgG1 kappa Isotype Control, PE (Product # 12-4714-82) (left) or CD25 Monoclonal Antibody, PE (right). Cells in the lymphocyte gate were used for analysis.

Flow Cytometry (41)

<p>Cytotherapy</p> <p>CD73 activity of mesenchymal stromal cell-derived extracellular vesicle preparations is detergent-resistant and does not correlate with immunomodulatory capabilities.</p> <p>"12-0259-42 was used in Flow Cytometry to assess whether ecto-5'-nucleotidase enzyme activity could serve as an indicator of the immunomodulatory potency of MSC-EV preparations."</p> <p>Authors: Bauer FN,Tertel T,Stambouli O,Wang C,Dittrich R,Staubach S,Börger V,Hermann DM,Brandau S,Giebel B</p>	<p>Year</p> <p>2023</p> <p>Species</p> <p>Human</p>
<p>Cells</p> <p>The Composition of Adipose-Derived Regenerative Cells Isolated from Lipoaspirate Using a Point of Care System Does Not Depend on the Subject's Individual Age, Sex, Body Mass Index and Ethnicity.</p> <p>"12-0259-42 was used in Flow cytometry/Cell sorting to show that key characteristics of unmodified, autologous, adipose-derived regenerative cells (UA-ADRCs) can be independent of the subject's age, sex, BMI and ethnicity."</p> <p>Authors: Schmitz C,Alt C,Azares AR,Pearce DA,Facile TR,Furia JP,Maffulli N,Huang C,Alt EU</p>	<p>Year</p> <p>2022</p> <p>Species</p> <p>Human</p>

[View more Flow references on thermofisher.cn](#)

More applications with references on thermofisher.cn

For Research Use Only. Not for use in diagnostic procedures. Not for resale without express authorization. Products are warranted to operate or perform substantially in conformance with published Product specifications in effect at the time of sale, as set forth in the Production documentation, specifications and/or accompanying package inserts ("Documentation"). No claim of suitability for use in applications regulated by FDA is made. The warranty provided herein is valid only when used by properly trained individuals. Unless otherwise stated in the Documentation, this warranty is limited to one year from date of shipment when the Product is subjected to normal, proper and intended usage. This warranty does not extend to anyone other than the Buyer. Any model or sample furnished to Buyer is merely illustrative of the general type and quality of goods and does not represent that any Product will conform to such model or sample. NO OTHER WARRANTIES, EXPRESS OR IMPLIED, ARE GRANTED INCLUDING WITHOUT LIMITATION, IMPLIED WARRANTIES OF MERCHANTABILITY, FITNESS FOR ANY PARTICULAR PURPOSE, OR NON INFRINGEMENT. BUYER'S EXCLUSIVE REMEDY FOR NON-CONFORMING PRODUCTS DURING THE WARRANTY PERIOD IS LIMITED TO REPAIR, REPLACEMENT OF OR REFUND FOR THE NON-CONFORMING PRODUCT(S) AT SELLER'S SOLE OPTION. THERE IS NO OBLIGATION TO REPAIR, REPLACE OR REFUND FOR PRODUCTS AS THE RESULT OF (i) ACCIDENT, DISASTER OR EVENT OF FORCE MAJEURE, (ii) MISUSE, FAULT OR NEGLIGENCE OF OR BY BUYER, (iii) USE OF THE PRODUCTS IN A MANNER FOR WHICH THEY WERE NOT DESIGNED, OR (iv) IMPROPER STORAGE AND HANDLING OF THE PRODUCTS. Unless otherwise expressly stated on the Product or in the documentation accompanying the Product, the Product is intended for research only and is not to be used for any other purpose, including without limitation, unauthorized commercial uses, in vitro diagnostic uses, ex vivo or in vivo therapeutic uses, or any type of consumption by or application to human or animals.