

CD11c Monoclonal Antibody (3.9), PE, eBioscience™

| Product Details | |
|-----------------------------|---|
| Size | 100 Tests |
| Species Reactivity | Human |
| Published Species | Human, Mouse, Rhesus monkey |
| Host/Isotype | Mouse / IgG1, kappa |
| Recommended Isotype Control | Mouse IgG1 kappa Isotype Control (P3.6.2.8.1), PE, eBioscience™ |
| Class | Monoclonal |
| Type | Antibody |
| Clone | 3.9 |
| Conjugate | PE |
| Excitation/Emission Max | 565/576 nm |
| Form | Liquid |
| Concentration | 5 µL/Test |
| Purification | Affinity chromatography |
| Storage buffer | PBS, pH 7.2, with BSA |
| Contains | 0.09% sodium azide |
| Storage conditions | 4° C, store in dark, DO NOT FREEZE! |
| RRID | AB_10597432 |

| Applications | Tested Dilution | Publications |
|-----------------------|------------------|-----------------|
| Flow Cytometry (Flow) | 5 µL (1 µg)/test | 30 Publications |

Product Specific Information

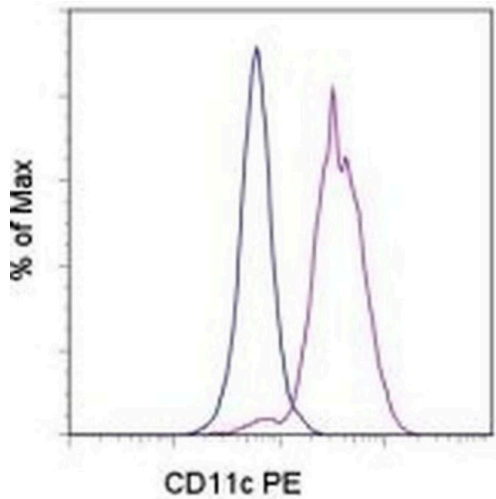
Description: The 3.9 monoclonal antibody reacts with human CD11c, the 150 kDa integrin alphaX chain. CD11c non-covalently associates with beta2 integrin to form the CD11c/CD18 heterodimer. This complex is expressed on monocytes, granulocytes, macrophages, NK, dendritic cells and subset of T and B lymphocytes. CD11c/CD18 binds to CD54, iC3b and fibrinogen and plays a role in leukocyte adhesive interactions.

Applications Reported: The 3.9 antibody has been reported for use in flow cytometric analysis.

Applications Tested: The 3.9 antibody has been pre-titrated and tested by flow cytometric analysis of normal human peripheral blood cells. This can be used at 5 µL (1 µg) per test. A test is defined as the amount (µg) of antibody that will stain a cell sample in a final volume of 100 µL. Cell number should be determined empirically but can range from 10^5 to 10^8 cells/test.

Excitation: 488-561 nm; Emission: 578 nm; Laser: Blue Laser, Green Laser, Yellow-Green Laser.

Filtration: 0.2 µm post-manufacturing filtered.



CD11c Antibody (12-0116-42) in Flow
Staining of normal human peripheral blood cells with Mouse IgG1 kappa Isotype Control PE (Product # 12-4714-81) (blue histogram) or Anti-Human CD11c PE (purple histogram). Cells in the monocyte gate were used for analysis.

[View more figures on thermofisher.cn](#)

[30 References](#)

Flow Cytometry (30)

| | | |
|---|--|------|
| Poultry science | | Year |
| Long-term supplementation of genistein improves immune homeostasis in the aged gut and extends the laying cycle of aged laying hens. | | 2024 |
| "Published figure using CD11c monoclonal antibody (Product # 12-0116-42) in Flow Cytometry" | | |
| Authors: Hou Q,Li G,Pan X,Zhong X,Geng X,Yang X,Yang X,Zhang B | | |
| Respiratory research | | Year |
| Alveolar macrophages from EVALI patients and e-cigarette users: a story of shifting phenotype. | | 2023 |
| "Published figure using CD11c monoclonal antibody (Product # 12-0116-42) in Flow Cytometry" | | |
| Authors: Warren KJ,Beck EM,Callahan SJ,Helms MN,Middleton E,Maddock S,Carr JR,Harris D,Blagev DP,Lanspa MJ,Brown SM,Paine R | | |

[View more Flow references on thermofisher.cn](#)

More applications with references on thermofisher.cn

For Research Use Only. Not for use in diagnostic procedures. Not for resale without express authorization. Products are warranted to operate or perform substantially in conformance with published Product specifications in effect at the time of sale, as set forth in the Production documentation, specifications and/or accompanying package inserts ("Documentation"). No claim of suitability for use in applications regulated by FDA is made. The warranty provided herein is valid only when used by properly trained individuals. Unless otherwise stated in the Documentation, this warranty is limited to one year from date of shipment when the Product is subjected to normal, proper and intended usage. This warranty does not extend to anyone other than the Buyer. Any model or sample furnished to Buyer is merely illustrative of the general type and quality of goods and does not represent that any Product will conform to such model or sample. NO OTHER WARRANTIES, EXPRESS OR IMPLIED, ARE GRANTED INCLUDING WITHOUT LIMITATION, IMPLIED WARRANTIES OF MERCHANTABILITY, FITNESS FOR ANY PARTICULAR PURPOSE, OR NON INFRINGEMENT. BUYER'S EXCLUSIVE REMEDY FOR NON-CONFORMING PRODUCTS DURING THE WARRANTY PERIOD IS LIMITED TO REPAIR, REPLACEMENT OF OR REFUND FOR THE NON-CONFORMING PRODUCT(S) AT SELLER'S SOLE OPTION. THERE IS NO OBLIGATION TO REPAIR, REPLACE OR REFUND FOR PRODUCTS AS THE RESULT OF (I) ACCIDENT, DISASTER OR EVENT OF FORCE MAJEURE, (II) MISUSE, FAULT OR NEGLIGENCE OF OR BY BUYER, (III) USE OF THE PRODUCTS IN A MANNER FOR WHICH THEY WERE NOT DESIGNED, OR (IV) IMPROPER STORAGE AND HANDLING OF THE PRODUCTS. Unless otherwise expressly stated on the Product or in the documentation accompanying the Product, the Product is intended for research only and is not to be used for any other purpose, including without limitation, unauthorized commercial uses, in vitro diagnostic uses, ex vivo or in vivo therapeutic uses, or any type of consumption by or application to human or animals.