

# CD105 (Endoglin) Monoclonal Antibody (SN6), PE, eBioscience™

Product Details	
Size	100 Tests
Species Reactivity	Human
Published Species	Fruit fly, Mammal, Bovine, Human, Mouse, Horse
Host/Isotype	Mouse / IgG1, kappa
Recommended Isotype Control	Mouse IgG1 kappa Isotype Control (P3.6.2.8.1), PE, eBioscience™
Class	Monoclonal
Type	Antibody
Clone	SN6
Conjugate	PE
Excitation/Emission Max	565/576 nm
Form	Liquid
Concentration	5 µL/Test
Purification	Affinity chromatography
Storage buffer	PBS, pH 7.2, with BSA
Contains	0.09% sodium azide
Storage conditions	4° C, store in dark, DO NOT FREEZE!
RRID	AB_1311123

Applications	Tested Dilution	Publications
Immunocytochemistry (ICC/IF)	-	2 Publications
Flow Cytometry (Flow)	5 µL (1 µg)/test	94 Publications

## Product Specific Information

**Description:** The SN6 monoclonal antibody reacts with human CD105, also known as Endoglin. CD105, an approximately 90 kDa disulfide-linked homodimer is expressed by vascular endothelial cells and some bone marrow cells and activated macrophages. It is suggested that CD105 functions in adhesion and embryonic angiogenesis.

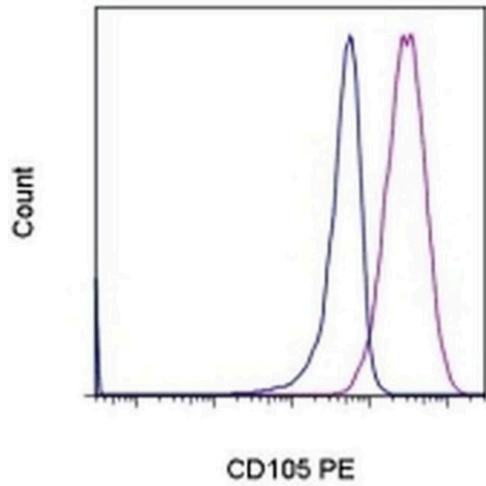
**Applications Reported:** The SN6 antibody has been reported for use in flow cytometric analysis.

**Applications Tested:** The SN6 antibody has been pre-titrated and tested by flow cytometric analysis of the U937 cell line. This can be used at 5 µL (1 µg) per test. A test is defined as the amount (µg) of antibody that will stain a cell sample in a final volume of 100 µL. Cell number should be determined empirically but can range from 10<sup>5</sup> to 10<sup>8</sup> cells/test.

**Excitation:** 488-561 nm; **Emission:** 578 nm; **Laser:** Blue Laser, Green Laser, Yellow-Green Laser.

**Filtration:** 0.2 µm post-manufacturing filtered.

## Product Images For CD105 (Endoglin) Monoclonal Antibody (SN6), PE, eBioscience™



### CD105 (Endoglin) Antibody (12-1057-42) in Flow

Staining of U937 cells with Mouse IgG1 K Isotype Control PE (Product # 12-4714-81) (blue histogram) or Anti-Human CD105 (Endoglin) PE (purple histogram). Total viable cells, as determined by Fixable Viability Dye eFluor® 780, were used for analysis.

[View more figures on thermofisher.cn](http://thermofisher.cn)

## Immunocytochemistry (2)

### Stem cell research

#### Generation of human embryonic stem cell line with heterozygous RB1 deletion by CRIPSR/Cas9 nickase.

"12-1057-42 was used in Immunocytochemistry to demonstrate generation of a heterozygous deletion of the RB1 gene in the H1 human embryonic stem cell line using CRISPR/Cas9 nickase genome editing."

Authors: Tu J,Huo Z,Liu M,Wang D,Xu A,Zhou R,Zhu D,Gingold J,Shen J,Zhao R,Lee DF

Year  
2018

Species  
Human

Dilution  
1:400

### Tissue engineering. Part A

#### Differentiation of human adipose-derived stem cells into neuron-like cells which are compatible with photocurable three-dimensional scaffolds.

"12-1057 was used in Immunocytochemistry to investigate the differentiation of human adipose-derived stem cells into neuron-like cells which are compatible with photocurable 3D scaffolds."

Authors: Gao S,Zhao P,Lin C,Sun Y,Wang Y,Zhou Z,Yang D,Wang X,Xu H,Zhou F,Cao L,Zhou W,Ning K,Chen X,Xu J

Year  
2014

Species  
Human

## Flow Cytometry (94)

### Stem cells international

#### Stimulated Human Umbilical Cord Mesenchymal Stem Cells Enhance the Osteogenesis and Cranial Bone Regeneration through IL-32 Mediated P38 Signaling Pathway.

"Published figure using CD105 (Endoglin) monoclonal antibody (Product # 12-1057-42) in Flow Cytometry"

Authors: Zhang X,Zheng Y,Wang G,Liu Y,Wang Y,Jiang X,Liang Y,Zhao X,Li P,Zhang Y

Year  
2024

### Cells

#### Generation of Highly Functional Hepatocyte-like Organoids from Human Adipose-Derived Mesenchymal Stem Cells Cultured with Endothelial Cells.

"Published figure using CD105 (Endoglin) monoclonal antibody (Product # 12-1057-42) in Flow Cytometry"

Authors: Chen S,Saito Y,Waki Y,Ikemoto T,Teraoku H,Yamada S,Morine Y,Shimada M

Year  
2024

[View more Flow references on thermofisher.cn](#)

## More applications with references on thermofisher.cn

For Research Use Only. Not for use in diagnostic procedures. Not for resale without express authorization. Products are warranted to operate or perform substantially in conformance with published Product specifications in effect at the time of sale, as set forth in the Production documentation, specifications and/or accompanying package inserts ("Documentation"). No claim of suitability for use in applications regulated by FDA is made. The warranty provided herein is valid only when used by properly trained individuals. Unless otherwise stated in the Documentation, this warranty is limited to one year from date of shipment when the Product is subjected to normal, proper and intended usage. This warranty does not extend to anyone other than the Buyer. Any model or sample furnished to Buyer is merely illustrative of the general type and quality of goods and does not represent that any Product will conform to such model or sample. NO OTHER WARRANTIES, EXPRESS OR IMPLIED, ARE GRANTED INCLUDING WITHOUT LIMITATION, IMPLIED WARRANTIES OF MERCHANTABILITY, FITNESS FOR ANY PARTICULAR PURPOSE, OR NON INFRINGEMENT. BUYER'S EXCLUSIVE REMEDY FOR NON-CONFORMING PRODUCTS DURING THE WARRANTY PERIOD IS LIMITED TO REPAIR, REPLACEMENT OF OR REFUND FOR THE NON-CONFORMING PRODUCT(S) AT SELLER'S SOLE OPTION. THERE IS NO OBLIGATION TO REPAIR, REPLACE OR REFUND FOR PRODUCTS AS THE RESULT OF (i) ACCIDENT, DISASTER OR EVENT OF FORCE MAJEURE, (ii) MISUSE, FAULT OR NEGLIGENCE OF OR BY BUYER, (iii) USE OF THE PRODUCTS IN A MANNER FOR WHICH THEY WERE NOT DESIGNED, OR (iv) IMPROPER STORAGE AND HANDLING OF THE PRODUCTS. Unless otherwise expressly stated on the Product or in the documentation accompanying the Product, the Product is intended for research only and is not to be used for any other purpose, including without limitation, unauthorized commercial uses, in vitro diagnostic uses, ex vivo or in vivo therapeutic uses, or any type of consumption by or application to human or animals.