

# CD8b Monoclonal Antibody (eBioH35-17.2 (H35-17.2)), FITC, eBioscience™

Product Details	
Size	100 µg
Species Reactivity	Mouse
Published Species	Mouse
Host/Isotype	Rat / IgG2b, kappa
Recommended Isotype Control	Rat IgG2b kappa Isotype Control (eB149/10H5), FITC, eBioscience™
Class	Monoclonal
Type	Antibody
Clone	eBioH35-17.2 (H35-17.2)
Conjugate	FITC
Excitation/Emission Max	498/517 nm
Form	Liquid
Concentration	0.5 mg/mL
Purification	Affinity chromatography
Storage buffer	PBS, pH 7.2
Contains	0.09% sodium azide
Storage conditions	4° C, store in dark, DO NOT FREEZE!
RRID	AB_657764

Applications	Tested Dilution	Publications
Immunohistochemistry (Frozen) (IHC (F))	-	2 Publications
Flow Cytometry (Flow)	0.25 µg/test	17 Publications

## Product Specific Information

**Description:** The eBioH35-17.2 monoclonal antibody reacts with the mouse CD8 beta molecule. The CD8 beta chain associates with the CD8 alpha chain to form the CD8 alpha/beta heterodimer expressed on the surface of a majority of thymocytes, and on peripheral cytotoxic alpha beta TCR T cells. CD8 binds to MHC class I and plays a role in T cell development and activation of mature T cells.

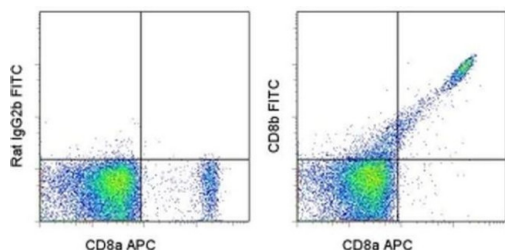
**Applications Reported:** This eBioH35-17.2 (H35-17.2) antibody has been reported for use in flow cytometric analysis.

**Applications Tested:** This eBioH35-17.2 (H35-17.2) antibody has been tested by flow cytometric analysis of mouse splenocytes. This can be used at less than or equal to 0.25 µg per test. A test is defined as the amount (µg) of antibody that will stain a cell sample in a final volume of 100 µL. Cell number should be determined empirically but can range from 10<sup>5</sup> to 10<sup>8</sup> cells/test. It is recommended that the antibody be carefully titrated for optimal performance in the assay of interest.

**Excitation:** 488 nm; **Emission:** 520 nm; **Laser:** Blue Laser.

**Filtration:** 0.2 µm post-manufacturing filtered.

## Product Images For CD8b Monoclonal Antibody (eBioH35-17.2 (H35-17.2)), FITC, eBioscience™



### CD8b Antibody (11-0083-82) in Flow

Staining of BALB/c splenocytes with Anti-Mouse CD8a APC (Product # 17-0081-82) and 0.125 µg of Rat IgG2b kappa Isotype Control FITC (Product # 11-4031-82) (left) or 0.125 µg of Anti-Mouse CD8b FITC (right). Cells in the lymphocyte gate were used for analysis.

[View more figures on thermofisher.cn](#)

### 19 References

#### Immunohistochemistry (Frozen) (2)

##### Microbial pathogenesis

### CD8alphaalpha T cells in lesions of *Listeria monocytogenes*-infected beta2m-deficient mice.

Authors: Thoma-Uszynski S, Emoto M, Kaufmann SH

Year  
1997

##### Infection and immunity

### Depletion of T-cell subpopulations results in exacerbation of myocarditis and parasitism in experimental Chagas' disease.

Authors: Tarleton RL, Sun J, Zhang L, Postan M

Year  
1994

#### Flow Cytometry (17)

##### iScience

### Bifidobacterium affects antitumor efficacy of oncolytic adenovirus in a mouse model of melanoma.

"11-0083-82 was used in Flow Cytometry to suggest that molecular mimicry between melanoma and Bifidobacterium-derived epitopes may favor activation of cross-reactive T cells and constitutes one of the mechanisms by which gut microbiota modulates OV's response."

Authors: Tripodi L, Feola S, Granata I, Whalley T, Passariello M, Capasso C, Coluccino L, Vitale M, Scalia G, Gentile L, De Lorenzo C, Guaracino MR, Castaldo G, D'Argenio V, Szomolay B, Cerullo V, Pastore L

Year  
2023

Species  
Mouse

##### Cell reports

### IL-18BP mediates the balance between protective and pathological immune responses to *Toxoplasma gondii*.

"11-0083-82 was used in Flow cytometry/Cell sorting to investigate the role of interleukin-18 (IL-18) and its binding protein (IL-18BP) in controlling *Toxoplasma gondii* infection."

Authors: Clark JT, Weizman OE, Aldridge DL, Shallberg LA, Eberhard J, Lanzar Z, Wasche D, Huck JD, Zhou T, Ring AM, Hunter CA

Year  
2023

Species  
Mouse

[View more Flow references on thermofisher.cn](#)

#### More applications with references on thermofisher.cn

For Research Use Only. Not for use in diagnostic procedures. Not for resale without express authorization. Products are warranted to operate or perform substantially in conformance with published Product specifications in effect at the time of sale, as set forth in the Production documentation, specifications and/or accompanying package inserts ("Documentation"). No claim of suitability for use in applications regulated by FDA is made. The warranty provided herein is valid only when used by properly trained individuals. Unless otherwise stated in the Documentation, this warranty is limited to one year from date of shipment when the Product is subjected to normal, proper and intended usage. This warranty does not extend to anyone other than the Buyer. Any model or sample furnished to Buyer is merely illustrative of the general type and quality of goods and does not represent that any Product will conform to such model or sample. NO OTHER WARRANTIES, EXPRESS OR IMPLIED, ARE GRANTED INCLUDING WITHOUT LIMITATION, IMPLIED WARRANTIES OF MERCHANTABILITY, FITNESS FOR ANY PARTICULAR PURPOSE, OR NON INFRINGEMENT. BUYER'S EXCLUSIVE REMEDY FOR NON-CONFORMING PRODUCTS DURING THE WARRANTY PERIOD IS LIMITED TO REPAIR, REPLACEMENT OF OR REFUND FOR THE NON-CONFORMING PRODUCT(S) AT SELLER'S SOLE OPTION. THERE IS NO OBLIGATION TO REPAIR, REPLACE OR REFUND FOR PRODUCTS AS THE RESULT OF (I) ACCIDENT, DISASTER OR EVENT OF FORCE MAJEURE, (II) MISUSE, FAULT OR NEGLIGENCE OF OR BY BUYER, (III) USE OF THE PRODUCTS IN A MANNER FOR WHICH THEY WERE NOT DESIGNED, OR (IV) IMPROPER STORAGE AND HANDLING OF THE PRODUCTS. Unless otherwise expressly stated on the Product or in the documentation accompanying the Product, the Product is intended for research only and is not to be used for any other purpose, including without limitation, unauthorized commercial uses, in vitro diagnostic uses, ex vivo or in vivo therapeutic uses, or any type of consumption by or application to human or animals.