

# Goat anti-Mouse IgG (H+L) Cross-Adsorbed Secondary Antibody, Alexa Fluor™ 350

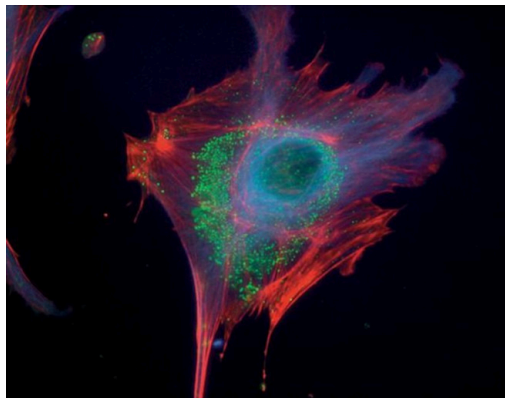
Product Details	
Size	1 mg
Species Reactivity	Mouse
Host/Isotype	Goat / IgG
Class	Polyclonal
Type	Secondary Antibody
Conjugate	Alexa Fluor™ 350
Excitation/Emission Max	343/441 nm
Immunogen	Gamma Immunoglobins Heavy and Light chains
Form	Liquid
Concentration	2 mg/mL
Purification	purified
Storage buffer	PBS, pH 7.5
Contains	5mM sodium azide
Storage conditions	4° C, store in dark
RRID	AB_2534100

Applications	Tested Dilution	Publications
Immunohistochemistry (IHC)	1-10 µg/mL	-
Immunohistochemistry - Free Floating (IHC (Free))	-	0 Publication
Immunocytochemistry (ICC/IF)	1-10 µg/mL	0 Publication
Flow Cytometry (Flow)	1-10 µg/mL	0 Publication
Miscellaneous PubMed (Misc)	-	0 Publication

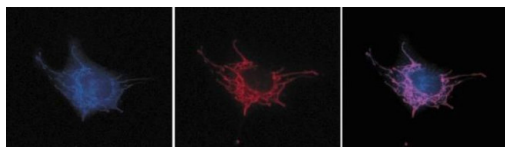
## Product Specific Information

Product will be shipped at Room Temperature.

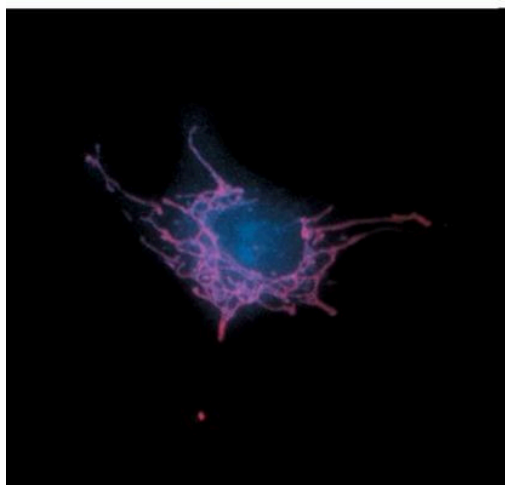
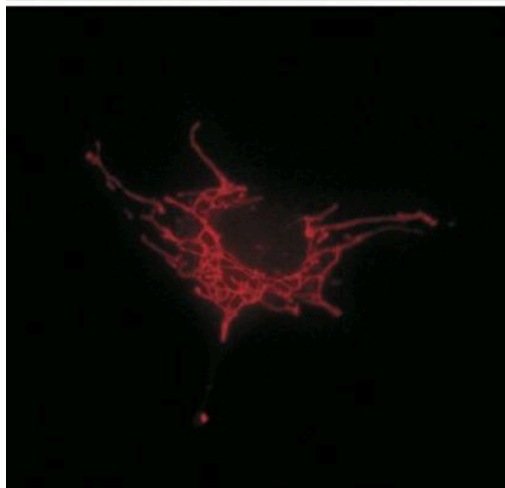
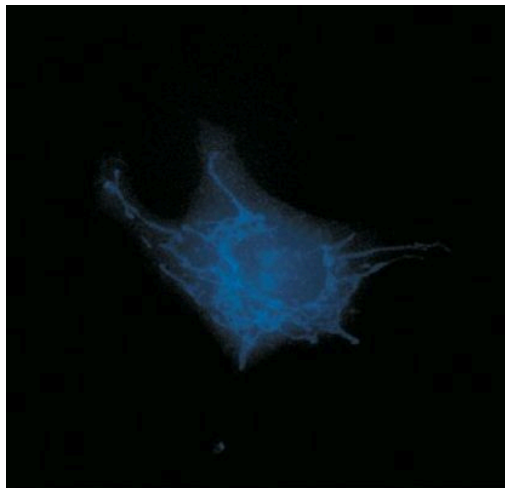
## Product Images For Goat anti-Mouse IgG (H+L) Cross-Adsorbed Secondary Antibody, Alexa Fluor™ 350



**Mouse IgG (H+L) Cross-Adsorbed Secondary Antibody (A-11045) in ICC/IF**  
Microtubules of fixed bovine pulmonary artery endothelial cells localized with mouse monoclonal anti- $\alpha$ -tubulin antibody (Product # A11126), which was subsequently visualized with Alexa Fluor® 350 goat anti-mouse IgG antibody (Product # A-11045). Next, the F-actin was labeled with Alexa Fluor® 594 phalloidin (Product # A12381). Finally, the cells were incubated with Alexa Fluor® 488 wheat germ agglutinin (Product # W11261) to stain components of endosomal pathways. The superimposed and pseudocolored images were acquired sequentially using bandpass filter sets appropriate for DAPI, the Texas Red® dye and FITC, respectively.



**Mouse IgG (H+L) Cross-Adsorbed Secondary Antibody (A-11045) in ICC/IF**  
Live bovine pulmonary artery endothelial cells (BPAEC) loaded with red-fluorescent MitoTracker Red CMXRos (Product # M-7512), fixed and permeabilized (middle). After fixation and permeabilization, the cells were treated with a cocktail containing two mouse monoclonal antibodies to cytochrome oxidase (the anti-OxPhos Complex IV subunit VIc (Product # A6401) and anti-OxPhos Complex IV subunit I (Product # A6403) antibodies), which were then detected using blue-fluorescent Alexa Fluor 350 goat anti-mouse IgG antibody (Product # A-11045) (left). The image in the right panel is an overlay of the first two images.



**Mouse IgG (H+L) Cross-Adsorbed Secondary Antibody (A-11045) in ICC/IF**  
 Live bovine pulmonary artery endothelial cells loaded with MitoTracker® Red CMXRos (Product # M-7512) then fixed and permeabilized. The cells were then treated with a cocktail containing two antibodies to cytochrome oxidase: the anti-OxPhos Complex IV subunit VIc (Product # A6401) and anti-OxPhos Complex IV subunit I (Product # A6403) antibodies. The mitochondria were then labeled with Alexa Fluor® 350 goat anti-mouse IgG antibody (Product # A-11045). The image on the right is an overlay of the first two images.

[View more figures on thermofisher.cn](https://www.thermofisher.cn)

High-throughput differentiation of human blood vessel organoids reveals overlapping and distinct functions of the cerebral cavernous malformation proteins bioRxiv (2024)

Requirement of Nek2a and cyclin A2 for Wapl-dependent removal of cohesin from prophase chromatin. EMBO J (2024)

DNA combing versus DNA spreading and the separation of sister chromatids. J Cell Biol (2024)

Lmod2 is necessary for effective skeletal muscle contraction. Sci Adv (2024)

Activation of innate immune receptor TLR9 by mitochondrial DNA plays essential roles in the chemical long-term depression of hippocampal neurons. J Biol Chem (2024)

For Research Use Only. Not for use in diagnostic procedures. Not for resale without express authorization. Products are warranted to operate or perform substantially in conformance with published Product specifications in effect at the time of sale, as set forth in the Production documentation, specifications and/or accompanying package inserts ("Documentation"). No claim of suitability for use in applications regulated by FDA is made. The warranty provided herein is valid only when used by properly trained individuals. Unless otherwise stated in the Documentation, this warranty is limited to one year from date of shipment when the Product is subjected to normal, proper and intended usage. This warranty does not extend to anyone other than the Buyer. Any model or sample furnished to Buyer is merely illustrative of the general type and quality of goods and does not represent that any Product will conform to such model or sample. NO OTHER WARRANTIES, EXPRESS OR IMPLIED, ARE GRANTED INCLUDING WITHOUT LIMITATION, IMPLIED WARRANTIES OF MERCHANTABILITY, FITNESS FOR ANY PARTICULAR PURPOSE, OR NON INFRINGEMENT. BUYER'S EXCLUSIVE REMEDY FOR NON-CONFORMING PRODUCTS DURING THE WARRANTY PERIOD IS LIMITED TO REPAIR, REPLACEMENT OF OR REFUND FOR THE NON-CONFORMING PRODUCT(S) AT SELLER'S SOLE OPTION. THERE IS NO OBLIGATION TO REPAIR, REPLACE OR REFUND FOR PRODUCTS AS THE RESULT OF (I) ACCIDENT, DISASTER OR EVENT OF FORCE MAJEURE, (II) MISUSE, FAULT OR NEGLIGENCE OF OR BY BUYER, (III) USE OF THE PRODUCTS IN A MANNER FOR WHICH THEY WERE NOT DESIGNED, OR (IV) IMPROPER STORAGE AND HANDLING OF THE PRODUCTS. Unless otherwise expressly stated on the Product or in the documentation accompanying the Product, the Product is intended for research only and is not to be used for any other purpose, including without limitation, unauthorized commercial uses, in vitro diagnostic uses, ex vivo or in vivo therapeutic uses, or any type of consumption by or application to human or animals.