

Goat anti-Chicken IgY (H+L) Secondary Antibody, Alexa Fluor™ 647

Product Details	
Size	1 mg
Species Reactivity	Chicken
Host/Isotype	Goat / IgG
Class	Polyclonal
Type	Secondary Antibody
Conjugate	Alexa Fluor™ 647
Excitation/Emission Max	650/671 nm
Immunogen	Gamma Immunoglobins Heavy and Light chains
Form	Liquid
Concentration	2 mg/mL
Purification	purified
Storage buffer	PBS, pH 7.5
Contains	5mM sodium azide
Storage conditions	4° C, store in dark
RRID	AB_2535866

Applications	Tested Dilution	Publications
Western Blot (WB)	1:5,000-1:10,000	0 Publication
Immunohistochemistry (IHC)	1-10 µg/mL	0 Publication
Immunohistochemistry (Paraffin) (IHC (P))	-	0 Publication
Immunohistochemistry - Free Floating (IHC (Free))	-	0 Publication
Immunocytochemistry (ICC/IF)	1-10 µg/mL	0 Publication
Miscellaneous PubMed (Misc)	-	0 Publication

Product Specific Information

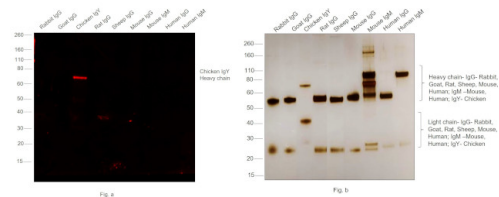
Alexa Fluor dyes are among the most trusted fluorescent dyes available today. Invitrogen™ Alexa Fluor 647 dye is a near-infrared-fluorescent dye with excitation ideally suited to the 647 nm laser line. For stable signal generation in imaging and flow cytometry, Alexa Fluor 647 dye is pH-insensitive over a wide molar range. Probes with high fluorescence quantum yield and high photostability allow detection of low-abundance biological structures with great sensitivity. Alexa Fluor 647 dye molecules can be attached to proteins at high molar ratios without significant self-quenching, enabling brighter conjugates and more sensitive detection. The degree of labeling for each conjugate is typically 2-8 fluorophore molecules per IgG molecule; the exact degree of labeling is indicated on the certificate of analysis for each product lot.

Using conjugate solutions: Centrifuge the protein conjugate solution briefly in a microcentrifuge before use; add only the supernatant to the experiment. This step will help eliminate any protein aggregates that may have formed during storage, thereby reducing nonspecific background staining. Because staining protocols vary with application, the appropriate dilution of antibody should be determined empirically. For the fluorophore-labeled antibodies a final concentration of 1-10 µg/mL should

be satisfactory for most immunohistochemistry and flow cytometry applications.

Product will be shipped at Room Temperature.

Product Images For Goat anti-Chicken IgY (H+L) Secondary Antibody, Alexa Fluor™ 647

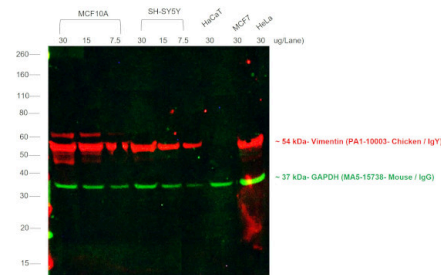


Chicken IgY (H+L) Secondary Antibody (A-21449)

Specificity of secondary antibody was demonstrated by specific detection of the target immunoglobulin. Antibody specificity was demonstrated by specific detection of Chicken IgY. A band at ~ 68 kDa corresponding to Chicken IgY Heavy Chain was observed in Chicken IgY but not in other species using Goat anti-Chicken IgY (H+L) Secondary Antibody, Alexa Fluor™ 647 (Product # A-21449) in Western Blot. {RE}

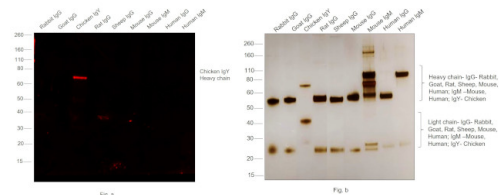
Chicken IgY (H+L) Secondary Antibody (A-21449) in WB

Multiplexed fluorescent western blot was performed using Goat anti-Chicken IgY (H+L) Secondary Antibody, Alexa Fluor™ 647 (Product # A-21449). Whole cell extracts of MCF10A (Lane 1, 2, 3), SH-SY5Y (Lane 4, 5, 6), HaCaT (Lane 7), MCF7 (Lane 8) and HeLa (Lane 9) were electrophoresed usingNuPAGE™ 4-12% Bis-Tris Protein Gel (Product # NP0322BOX). Resolved proteins were transferred onto anitrocellulose membrane (Product # IB23001) byiBlot® 2 Dry BlottingSystem (Product # IB21001). The blot was probed with Vimentin Polyclonal Antibody (Product # PA1-10003), and GAPDH Loading Control Monoclonal Antibody (GA1R) (Product # MA5-15738). Secondary antibodies (Product # A-21103, 1:10,000 dilution), and (Product # A32766, 1:10,000 dilution) were used for detection of Vimentin, and GAPDH respectively. Fluorescent detection was performed usingiBright™ FL1500 (Product # A44115). The anti-chicken secondary antibody (Product # A-21449) specifically detects the chicken primary antibody.



Chicken IgY (H+L) Secondary Antibody (A-21449) in WB

Western blot was performed using Goat anti-Chicken IgY (H+L) Secondary Antibody, Alexa Fluor™ 647 (Product # A-21449) and a 67 kDa bandcorresponding to Chicken IgY Heavy Chain was observed in Chicken IgY but not in Rabbit IgG, Goat IgG, Rat IgG, Sheep IgG, Mouse IgG, Mouse IgM, Human IgG and Human IgM. Purified protein (100 ng) of Rabbit IgG(Lane 1), Goat IgG (Lane 2), Chicken IgY (Lane 3), Rat IgG (Lane 4), Sheep IgG (Lane 5), Mouse IgG (Lane 6), Mouse IgM (Lane 7), Human IgG (Lane 8), and Human IgM (Lane 9) wereelectrophoresed usingNuPAGE™ 4-12% Bis-Tris Protein Gel (Product # NP0321BOX). Resolved proteins were then transferred onto a nitrocellulose membrane(Product # IB23001) byiBlot® 2 Dry Blotting System (Product # IB21001). The blot was probed with Goat anti-Chicken IgY (H+L) Secondary Antibody, Alexa Fluor™ 647 (Product # A-21449, 1:5000 dilution) and detected using theiBright™ FL1500 (Product # A44115). Silver staining was performed to establish equivalent loading of purified proteins using the Pierce™ Silver Stain Kit (Product # 24612) (Fig b).



View more figures on thermofisher.cn

Respiratory pathology in the mdx/utrn -/- mouse: A murine model for Duchenne Muscular Dystrophy (DMD). PLoS One (2025)

Erythropoietin decreases apoptosis and promotes Schwann cell repair and phagocytosis following nerve crush injury in mice bioRxiv (2025)

Protective mechanisms against Alzheimer's Disease in APOE3-Christchurch homozygous astrocytes bioRxiv (2025)

Characterisation of the axon initial segment and intrinsic excitability in the sub-acute phase post-ischemic stroke bioRxiv (2025)

Transgenic A53T mice have astrocytic -synuclein aggregates in dopamine and striatal regions bioRxiv (2025)

For Research Use Only. Not for use in diagnostic procedures. Not for resale without express authorization. Products are warranted to operate or perform substantially in conformance with published Product specifications in effect at the time of sale, as set forth in the Production documentation, specifications and/or accompanying package inserts ("Documentation"). No claim of suitability for use in applications regulated by FDA is made. The warranty provided herein is valid only when used by properly trained individuals. Unless otherwise stated in the Documentation, this warranty is limited to one year from date of shipment when the Product is subjected to normal, proper and intended usage. This warranty does not extend to anyone other than the Buyer. Any model or sample furnished to Buyer is merely illustrative of the general type and quality of goods and does not represent that any Product will conform to such model or sample. NO OTHER WARRANTIES, EXPRESS OR IMPLIED, ARE GRANTED INCLUDING WITHOUT LIMITATION, IMPLIED WARRANTIES OF MERCHANTABILITY, FITNESS FOR ANY PARTICULAR PURPOSE, OR NON INFRINGEMENT. BUYER'S EXCLUSIVE REMEDY FOR NON-CONFORMING PRODUCTS DURING THE WARRANTY PERIOD IS LIMITED TO REPAIR, REPLACEMENT OF OR REFUND FOR THE NON-CONFORMING PRODUCT(S) AT SELLER'S SOLE OPTION. THERE IS NO OBLIGATION TO REPAIR, REPLACE OR REFUND FOR PRODUCTS AS THE RESULT OF (i) ACCIDENT, DISASTER OR EVENT OF FORCE MAJEURE, (ii) MISUSE, FAULT OR NEGLIGENCE OF OR BY BUYER, (iii) USE OF THE PRODUCTS IN A MANNER FOR WHICH THEY WERE NOT DESIGNED, OR (iv) IMPROPER STORAGE AND HANDLING OF THE PRODUCTS. Unless otherwise expressly stated on the Product or in the documentation accompanying the Product, the Product is intended for research only and is not to be used for any other purpose, including without limitation, unauthorized commercial uses, in vitro diagnostic uses, ex vivo or in vivo therapeutic uses, or any type of consumption by or application to human or animals.