

Goat anti-Mouse IgG (H+L) Cross-Adsorbed Secondary Antibody, Alexa Fluor™ 750

Product Details	
Size	1 mg
Species Reactivity	Mouse
Host/Isotype	Goat / IgG
Class	Polyclonal
Type	Secondary Antibody
Conjugate	Alexa Fluor™ 750
Excitation/Emission Max	752/776 nm
Immunogen	Gamma Immunoglobins Heavy and Light chains
Form	Liquid
Concentration	2 mg/mL
Purification	purified
Storage buffer	PBS, pH 7.5
Contains	5mM sodium azide
Storage conditions	4° C, store in dark
RRID	AB_2535708

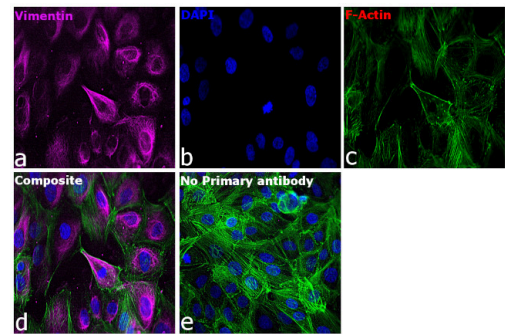
Applications	Tested Dilution	Publications
Western Blot (WB)	0.04-0.2 µg/mL	0 Publication
Immunocytochemistry (ICC/IF)	1-10 µg/mL	-
Flow Cytometry (Flow)	1-10 µg/mL	-
Miscellaneous PubMed (Misc)	-	0 Publication

Product Specific Information

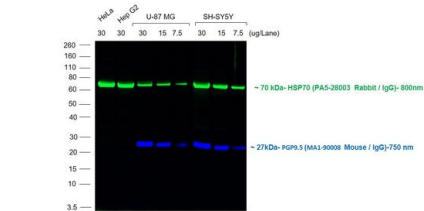
This secondary antibody is designed for fluorescent Western blot detection on various near-infrared fluorescence instruments. This antibody can be used for multi-color and multiplexing detection when using other antibodies conjugated to compatible Alexa Fluor™ dyes and wavelengths. Other applications of this antibody include immunofluorescent and fluorescent imaging applications when using instrumentation with appropriate excitation and detection capabilities.

Product will be shipped at Room Temperature.

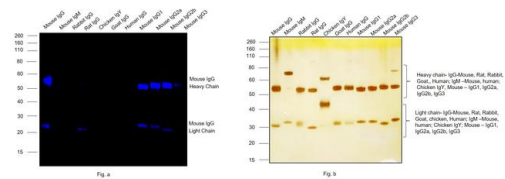
Mouse IgG (H+L) Cross-Adsorbed Secondary Antibody (A-21037) in ICC/IF
Immunofluorescence analysis of Goat anti-Mouse IgG (H+L) Cross-Adsorbed Secondary Antibody, Alexa Fluor 750 (Product # A-21037) was performed using MCF 10A, cells stained with Vimentin Monoclonal Antibody (V9), eBioscience™ (Product # 14-9897-82). The cells were fixed with 4% paraformaldehyde for 10 minutes, permeabilized with 0.1% Triton™ X-100 for 10 minutes, blocked with 1% BSA for 1 hour and labeled with 2 µg/mL primary antibody for 3 hours at room temperature. Goat anti-Mouse IgG (H+L) Cross-Adsorbed Secondary Antibody, Alexa Fluor 750 (Product # A-21037, 1:2000 dilution) in 0.1% BSA in PBS for 45 minutes at room temperature, was used for detection of Vimentin in the cytoskeleton (Panel a: purple). Nuclei (Panel b: blue) were stained with Hoechst33342 (Product # H1399). F-actin was stained with Alexa Fluor® 488 Phalloidin (Product # A12379, 1:300) (Panel c: green). Panel d represents the composite image. Non-specific staining was not observed with secondary antibody alone (panel e). The images were captured at 40X magnification in CellInsight CX7 LZR High-Content Screening (HCS) Platform (Product # CX7A1110LZR) and externally deconvoluted (D.Sage et al./Methods 115 (2017) 28–41).



Mouse IgG (H+L) Cross-Adsorbed Secondary Antibody (A-21037) in WB
Multiplexed fluorescent western blot was performed using Goat anti-Mouse IgG (H+L) Cross-Adsorbed Secondary Antibody, Alexa Fluor 750 (Product # A-21037). Whole cell extracts of HeLa (Lane 1), Hep G2 (Lane 2), U-87 MG (Lane 3, 4, 5), SH-SY5Y (Lane 6, 7, 8) were electrophoresed using NuPAGE™ 4-12% Bis-Tris Protein Gel (Product # NP03222BOX). Resolved proteins were transferred onto a nitrocellulose membrane (Product # IB23001) by iBlot® 2 Dry Blotting System (Product # IB21001). The blot was probed with PGP9.5 Monoclonal Antibody (13C4) (Product # MA1-90008) and HSP70 Polyclonal Antibody (Product # PA5-28003). Secondary antibodies (Product # A-21037, 1:10000 dilution) and (Product # A32802, 1:20000 dilution) were used for detection of PGP9.5 and HSP70 respectively. Fluorescent detection was performed using iBright FL1500 (Product # A44115). Goat anti-Mouse IgG (H+L) Cross-Adsorbed Secondary Antibody, Alexa Fluor 750 (Product # A-21037) specifically detects the mouse primary antibody.



Mouse IgG (H+L) Cross-Adsorbed Secondary Antibody (A-21037) in WB
Western blot was performed using Goat anti-Mouse IgG (H+L) Cross-Adsorbed Secondary Antibody, Alexa Fluor 750 (Product # A-21037) and ~55, 25 kDa bands corresponding to Mouse IgG Heavy Chain and Light Chain were observed in Mouse IgG, Mouse IgG1, Mouse IgG2a, Mouse IgG2b but not in Mouse IgM, Rabbit IgG, Chicken IgY, Goat IgG, Human IgG. Purified protein (100 ng) of Mouse IgG (Lane 1), Mouse IgM (Lane 2), Rabbit IgG (Lane 3), Rat IgG (Lane 4), Chicken IgY (Lane 5), Goat IgG (Lane 6) Human IgG (Lane 7), Mouse IgG1 (Lane 8), Mouse IgG2a (Lane 9), Mouse IgG2b (Lane 10) and Mouse IgG3 (Lane 11) (Fig. a) were electrophoresed using NuPAGE™ 4-12% Bis-Tris Protein Gel (Product # NP03222BOX). Resolved proteins were then transferred onto a nitrocellulose membrane (Product # IB23001) by iBlot® 2 Dry Blotting System (Product # IB21001). The blot was probed with Goat anti-Mouse IgG (H+L) Cross-Adsorbed Secondary Antibody, Alexa Fluor 750 (Product # A-21037, 1:2000 dilution) and detected using the iBright FL1500 (Product # A44115). Silver staining was performed to establish equivalent loading of purified proteins using the Pierce™ Silver Stain Kit (Product # 24612) (Fig. b). Antibody showed cross reactivity towards Rat IgG light chain.



Unsupervised clustering reveals noncanonical myeloid cell subsets in the brain tumor microenvironment. Cancer Immunol Immunother (2025)

Macrophage-derived extracellular vesicles transfer mitochondria to adipocytes and promote adipocyte-myofibroblast transition in epidural fibrosis. NPJ Regen Med (2024)

Transmembrane prostatic acid phosphatase: a therapeutic target in advanced prostate cancer. Am J Clin Exp Urol (2024)

Single cell and spatial transcriptomics highlight the interaction of club-like cells with immunosuppressive myeloid cells in prostate cancer. Nat Commun (2024)

A translocation-competent pore is required for *Shigella flexneri* to escape from the double membrane vacuole during intercellular spread bioRxiv (2024)

For Research Use Only. Not for use in diagnostic procedures. Not for resale without express authorization. Products are warranted to operate or perform substantially in conformance with published Product specifications in effect at the time of sale, as set forth in the Production documentation, specifications and/or accompanying package inserts ("Documentation"). No claim of suitability for use in applications regulated by FDA is made. The warranty provided herein is valid only when used by properly trained individuals. Unless otherwise stated in the Documentation, this warranty is limited to one year from date of shipment when the Product is subjected to normal, proper and intended usage. This warranty does not extend to anyone other than the Buyer. Any model or sample furnished to Buyer is merely illustrative of the general type and quality of goods and does not represent that any Product will conform to such model or sample. NO OTHER WARRANTIES, EXPRESS OR IMPLIED, ARE GRANTED INCLUDING WITHOUT LIMITATION, IMPLIED WARRANTIES OF MERCHANTABILITY, FITNESS FOR ANY PARTICULAR PURPOSE, OR NON INFRINGEMENT. BUYER'S EXCLUSIVE REMEDY FOR NON-CONFORMING PRODUCTS DURING THE WARRANTY PERIOD IS LIMITED TO REPAIR, REPLACEMENT OF OR REFUND FOR THE NON-CONFORMING PRODUCT(S) AT SELLER'S SOLE OPTION. THERE IS NO OBLIGATION TO REPAIR, REPLACE OR REFUND FOR PRODUCTS AS THE RESULT OF (i) ACCIDENT, DISASTER OR EVENT OF FORCE MAJEURE, (ii) MISUSE, FAULT OR NEGLIGENCE OF OR BY BUYER, (iii) USE OF THE PRODUCTS IN A MANNER FOR WHICH THEY WERE NOT DESIGNED, OR (iv) IMPROPER STORAGE AND HANDLING OF THE PRODUCTS. Unless otherwise expressly stated on the Product or in the documentation accompanying the Product, the Product is intended for research only and is not to be used for any other purpose, including without limitation, unauthorized commercial uses, in vitro diagnostic uses, ex vivo or in vivo therapeutic uses, or any type of consumption by or application to human or animals.