

Goat anti-Rabbit IgG (H+L) Cross-Adsorbed Secondary Antibody, Alexa Fluor™ 750

Product Details	
Size	1 mg
Species Reactivity	Rabbit
Host/Isotype	Goat / IgG
Class	Polyclonal
Type	Secondary Antibody
Conjugate	Alexa Fluor™ 750
Excitation/Emission Max	752/776 nm
Immunogen	Gamma Immunoglobins Heavy and Light chains
Form	Liquid
Concentration	2 mg/mL
Purification	purified
Storage buffer	PBS, pH 7.5
Contains	5mM sodium azide
Storage conditions	4° C, store in dark
RRID	AB_2535710

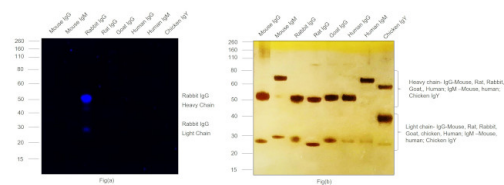
Applications	Tested Dilution	Publications
Western Blot (WB)	0.04-0.2 µg/mL	0 Publication
Immunocytochemistry (ICC/IF)	1-10 µg/mL	0 Publication
Flow Cytometry (Flow)	1-10 µg/mL	-
Miscellaneous PubMed (Misc)	-	0 Publication

Product Specific Information

This secondary antibody is designed for fluorescent Western blot detection on various near-infrared fluorescence instruments. This antibody can be used for multi-color and multiplexing detection when using other antibodies conjugated to compatible Alexa Fluor™ dyes and wavelengths. Other applications of this antibody include immunofluorescent and fluorescent imaging applications when using instrumentation with appropriate excitation and detection capabilities.

Product will be shipped at Room Temperature.

Product Images For Goat anti-Rabbit IgG (H+L) Cross-Adsorbed Secondary Antibody, Alexa Fluor™ 750

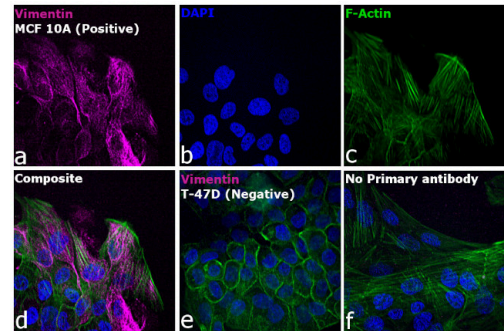


Rabbit IgG (H+L) Cross-Adsorbed Secondary Antibody (A-21039)

Specificity of secondary antibody was demonstrated by specific detection of the target immunoglobulin. Antibody specificity was demonstrated by specific detection of Rabbit IgG. Bands at ~50, 25 kDa corresponding to Rabbit IgG Heavy and Light Chain were observed in Rabbit IgG but not in other species using Goat anti-Rabbit IgG (H+L) Cross-Adsorbed Secondary Antibody, Alexa Fluor™ 750 (Product # A-21039) in Western Blot. {RE}

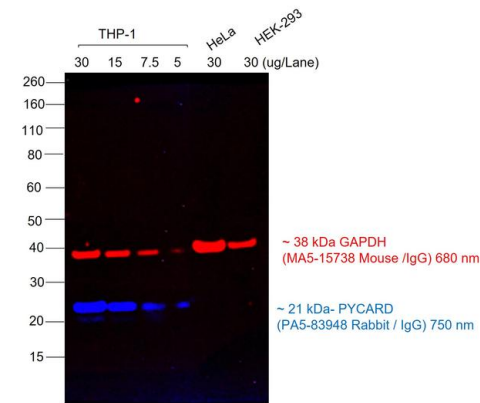
Rabbit IgG (H+L) Cross-Adsorbed Secondary Antibody (A-21039) in ICC/IF

Immunofluorescence analysis of Goat anti-Rabbit IgG (H+L) Cross-Adsorbed Secondary Antibody, Alexa Fluor™ 750 (Product # A-21039) was performed using MCF 10A (positive model) and T-47D (negative model) cells stained with Vimentin Polyclonal Antibody (Product # PA5-27231). The cells were fixed with 4% paraformaldehyde for 10 minutes, permeabilized with 0.1% Triton™ X-100 for 10 minutes, blocked with 1% BSA for 1 hour and labeled with 2 µg/mL primary antibody for 3 hours at room temperature. Goat anti-Rabbit IgG (H+L) Cross-Adsorbed Secondary Antibody, Alexa Fluor™ 750 (Product # A-21039, 1:2000 dilution) in 0.1% BSA in PBS for 45 minutes at room temperature, was used for detection of Vimentin in the cytoplasm (Panel a: pink). Nuclei (Panel b: blue) were stained with Hoechst33342 (Product # H1399). F-actin was stained with Alexa Fluor® 488 Phalloidin (Product # A12379, 1:300) (Panel c: green). Panel d represents the composite image. The specificity of the secondary antibody was proved by the absence of signal in T-47D (negative model for vimentin) due to no primary antibody binding (Panel e). Nonspecific staining was not observed with secondary antibody alone (panel f). The images were captured at 40X magnification in CellInsight CX7 LZR High-Content Screening (HCS) Platform (Product # CX7A1110LZR) and externally deconvoluted (D.Sage et al./Methods 115 (2017) 28–41).



Rabbit IgG (H+L) Cross-Adsorbed Secondary Antibody (A-21039) in WB

Multiplexed fluorescent western blot was performed using Goat anti-Rabbit IgG (H+L) Cross-Adsorbed Secondary Antibody, Alexa Fluor™ 750 (Product # A-21039). Whole cell extracts of THP-1 (Lane 1, 2, 3, 4), HeLa (Lane 5) and HEK-293 (Lane 6) were electrophoresed usingNuPAGE™ 4-12% Bis-Tris Protein Gel (Product # NP03222BOX). Resolved proteins were transferred onto anitrocellulose membrane (Product # IB23001) byiBlot® 2 Dry BlottingSystem (Product # IB21001). The blot was probed with PYCARD Polyclonal Antibody (Product # PA5-83948) and GAPDH Loading Control Monoclonal Antibody (GA1R) (Product # MA5-15738). Secondary antibodies (Product # A-21039, 1:20000 dilution) and (Product # A32788, 1:20000 dilution) were used for detection of PYCARD and GAPDH respectively. Fluorescent detection was performed usingiBrightFL1500 (Product # A44115). The anti-rabbit secondary antibody (Product # A-21039) specifically detects the rabbit primary antibody.



View more figures on thermofisher.cn

Loss of YTHDC1 m6A reading function promotes invasiveness in urothelial carcinoma of the bladder. Exp Mol Med (2025)

Protocol for detection of glial complement expression in relation to amyloid plaques in mouse brain with combined FISH and IHC. STAR Protoc (2024)

Neuronal interactions in forebrain organoids lead to protective antiviral responses. Research Square (2024)

Transmembrane prostatic acid phosphatase: a therapeutic target in advanced prostate cancer. Am J Clin Exp Urol (2024)

Explainable AI-based analysis of human pancreas sections identifies traits of type 2 diabetes medRxiv (2024)

For Research Use Only. Not for use in diagnostic procedures. Not for resale without express authorization. Products are warranted to operate or perform substantially in conformance with published Product specifications in effect at the time of sale, as set forth in the Production documentation, specifications and/or accompanying package inserts ("Documentation"). No claim of suitability for use in applications regulated by FDA is made. The warranty provided herein is valid only when used by properly trained individuals. Unless otherwise stated in the Documentation, this warranty is limited to one year from date of shipment when the Product is subjected to normal, proper and intended usage. This warranty does not extend to anyone other than the Buyer. Any model or sample furnished to Buyer is merely illustrative of the general type and quality of goods and does not represent that any Product will conform to such model or sample. NO OTHER WARRANTIES, EXPRESS OR IMPLIED, ARE GRANTED INCLUDING WITHOUT LIMITATION, IMPLIED WARRANTIES OF MERCHANTABILITY, FITNESS FOR ANY PARTICULAR PURPOSE, OR NON-INFRINGEMENT. BUYER'S EXCLUSIVE REMEDY FOR NON-CONFORMING PRODUCTS DURING THE WARRANTY PERIOD IS LIMITED TO REPAIR, REPLACEMENT OF OR REFUND FOR THE NON-CONFORMING PRODUCT(S) AT SELLER'S SOLE OPTION. THERE IS NO OBLIGATION TO REPAIR, REPLACE OR REFUND FOR PRODUCTS AS THE RESULT OF (i) ACCIDENT, DISASTER OR EVENT OF FORCE MAJEURE, (ii) MISUSE, FAULT OR NEGLIGENCE OF OR BY BUYER, (iii) USE OF THE PRODUCTS IN A MANNER FOR WHICH THEY WERE NOT DESIGNED, OR (iv) IMPROPER STORAGE AND HANDLING OF THE PRODUCTS. Unless otherwise expressly stated on the Product or in the documentation accompanying the Product, the Product is intended for research only and is not to be used for any other purpose, including without limitation, unauthorized commercial uses, in vitro diagnostic uses, ex vivo or in vivo therapeutic uses, or any type of consumption by or application to human or animals.