

Goat anti-Rabbit IgG (H+L) Cross-Adsorbed Secondary Antibody, Alexa Fluor™ 660

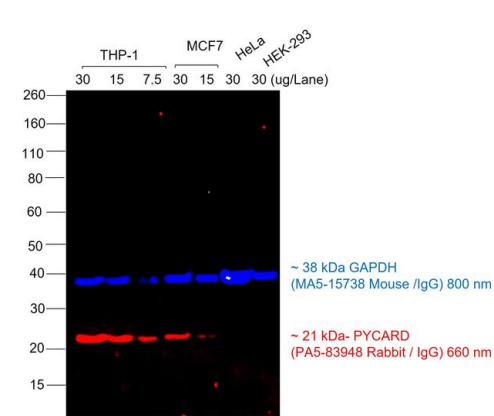
Product Details	
Size	1 mg
Species Reactivity	Rabbit
Host/Isotype	Goat / IgG
Class	Polyclonal
Type	Secondary Antibody
Conjugate	Alexa Fluor™ 660
Excitation/Emission Max	663/691 nm
Immunogen	Gamma Immunoglobins Heavy and Light chains
Form	Liquid
Concentration	2 mg/mL
Purification	purified
Storage buffer	PBS, pH 7.5
Contains	5mM sodium azide
Storage conditions	4° C, store in dark
RRID	AB_2535734

Applications	Tested Dilution	Publications
Western Blot (WB)	1:10,000	-
Immunocytochemistry (ICC/IF)	1-10 µg/mL	-
Flow Cytometry (Flow)	1-10 µg/mL	-
Miscellaneous PubMed (Misc)	-	0 Publication

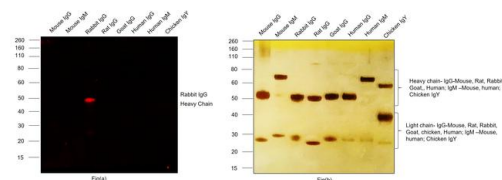
Product Specific Information

Product will be shipped at Room Temperature.

Product Images For Goat anti-Rabbit IgG (H+L) Cross-Adsorbed Secondary Antibody, Alexa Fluor™ 660



Rabbit IgG (H+L) Cross-Adsorbed Secondary Antibody (A-21073) in WB
Multiplexed fluorescent western blot was performed using Goat anti-Rabbit IgG (H+L) Cross-Adsorbed Secondary Antibody, Alexa Fluor™ 660 (Product # A-21073). Whole cell extracts of THP-1 (Lane 1, 2, 3), MCF7 (Lane 4, 5), HeLa (Lane 6) and HEK-293 (Lane 7) were electrophoresed usingNuPAGE™ 4-12% Bis-Tris Protein Gel (Product # NP03222BOX). Resolved proteins were transferred onto anitrocellulose membrane (Product # IB23001) byiBlot® 2 Dry BlottingSystem (Product # IB21001). The blot was probed with PYCARD Polyclonal Antibody (Product # PA5-83948) and GAPDH Loading Control Monoclonal Antibody (GA1R) (Product # MA5-15738). Secondary antibodies (Product # A-21073, 1:10000 dilution) and (Product # A32789, 1:20000 dilution) were used for detection of PYCARD and GAPDH respectively. Fluorescent detection was performed usingiBrightFL1500 (Product # A44115). The anti-rabbit secondary antibody (Product # A-21073) specifically detects the rabbit primary antibody.



Rabbit IgG (H+L) Cross-Adsorbed Secondary Antibody (A-21073) in WB
Western blot was performed using Goat anti-Rabbit IgG (H+L) Cross-Adsorbed Secondary Antibody, Alexa Fluor™ 660 (Product # A-21073) and ~50 kDa bandcorresponding to Rabbit IgG Heavy Chain was observed in Rabbit IgG but not in Mouse IgG, Mouse IgM, Goat IgG, Rat IgG, Goat IgG, Human IgG, Human IgM and Chicken IgY. Purified protein (100 ng) of Mouse IgG (Lane 1), Mouse IgM (Lane 2),Rabbit IgG(Lane 3), Rat IgG (Lane 4), Goat IgG (Lane 5) Human IgG (Lane 6), Human IgM (Lane 7) and Chicken IgY (Lane 8) (Fig a) wereelectrophoresed usingNuPAGE™ 4-12% Bis-Tris Protein Gel (Product # NP03222BOX). Resolved proteins were then transferred onto a nitrocellulose membrane(Product # IB23001) byiBlot® 2 Dry Blotting System (Product # IB21001). The blot was probed Goat anti-Rabbit IgG (H+L) Cross-Adsorbed Secondary Antibody, Alexa Fluor™ 660 (Product # A-21073, 1:2000 dilution) and detected using theiBrightFL1500 (Product # A44115). Silver staining was performed to establish equivalent loading of purified proteins using the Pierce™ Silver Stain Kit (Product # 24612) (Fig b).

20 References

Super-Resolution Analysis of the Origins of the Elementary Events of ER Calcium Release in Dorsal Root Ganglion Neurons. Cells (2023)

The bacterial effector GarD shields Chlamydia trachomatis inclusions from RNF213-mediated ubiquitylation and destruction. Cell Host Microbe (2022)

Differences between intrinsic and acquired nucleoside analogue resistance in acute myeloid leukaemia cells. J Exp Clin Cancer Res (2021)

Chemosensitivity analysis and study of gene resistance on tumors and cancer stem cell isolates from patients with colorectal cancer. Mol Med Rep (2021)

Pathologic tau conformer ensembles induce dynamic, liquid-liquid phase separation events at the nuclear envelope. BMC Biol (2021)

For Research Use Only. Not for use in diagnostic procedures. Not for resale without express authorization. Products are warranted to operate or perform substantially in conformance with published Product specifications in effect at the time of sale, as set forth in the Production documentation, specifications and/or accompanying package inserts ("Documentation"). No claim of suitability for use in applications regulated by FDA is made. The warranty provided herein is valid only when used by properly trained individuals. Unless otherwise stated in the Documentation, this warranty is limited to one year from date of shipment when the Product is subjected to normal, proper and intended usage. This warranty does not extend to anyone other than the Buyer. Any model or sample furnished to Buyer is merely illustrative of the general type and quality of goods and does not represent that any Product will conform to such model or sample. NO OTHER WARRANTIES, EXPRESS OR IMPLIED, ARE GRANTED INCLUDING WITHOUT LIMITATION, IMPLIED WARRANTIES OF MERCHANTABILITY, FITNESS FOR ANY PARTICULAR PURPOSE, OR NON-INFRINGEMENT. BUYER'S EXCLUSIVE REMEDY FOR NON-CONFORMING PRODUCTS DURING THE WARRANTY PERIOD IS LIMITED TO REPAIR, REPLACEMENT OF OR REFUND FOR THE NON-CONFORMING PRODUCT(S) AT SELLER'S SOLE OPTION. THERE IS NO OBLIGATION TO REPAIR, REPLACE OR REFUND FOR PRODUCTS AS THE RESULT OF (I) ACCIDENT, DISASTER OR EVENT OF FORCE MAJEURE, (II) MISUSE, FAULT OR NEGLIGENCE OF OR BY BUYER, (III) USE OF THE PRODUCTS IN A MANNER FOR WHICH THEY WERE NOT DESIGNED, OR (IV) IMPROPER STORAGE AND HANDLING OF THE PRODUCTS. Unless otherwise expressly stated on the Product or in the documentation accompanying the Product, the Product is intended for research only and is not to be used for any other purpose, including without limitation, unauthorized commercial uses, in vitro diagnostic uses, ex vivo or in vivo therapeutic uses, or any type of consumption by or application to human or animals.