

Goat anti-Human IgG (H+L) Cross-Adsorbed Secondary Antibody, Alexa Fluor™ 568

Product Details	
Size	1 mg
Species Reactivity	Human
Host/Isotype	Goat / IgG
Class	Polyclonal
Type	Secondary Antibody
Conjugate	Alexa Fluor™ 568
Excitation/Emission Max	579/603 nm
Immunogen	Gamma Immunoglobins Heavy and Light chains
Form	Liquid
Concentration	2 mg/mL
Purification	purified
Storage buffer	PBS, pH 7.5
Contains	5mM sodium azide
Storage conditions	4° C, store in dark
RRID	AB_2535746

Applications	Tested Dilution	Publications
Western Blot (WB)	1:2000	-
Immunohistochemistry (IHC)	1-10 µg/mL	-
Immunocytochemistry (ICC/IF)	1-10 µg/mL	0 Publication
Flow Cytometry (Flow)	-	0 Publication
Miscellaneous PubMed (Misc)	-	0 Publication

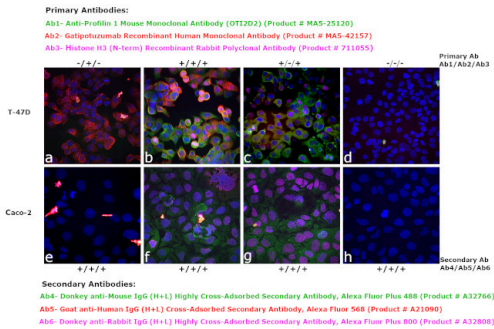
Product Specific Information

Product will be shipped at Room Temperature.

Product Images For Goat anti-Human IgG (H+L) Cross-Adsorbed Secondary Antibody, Alexa Fluor™ 568

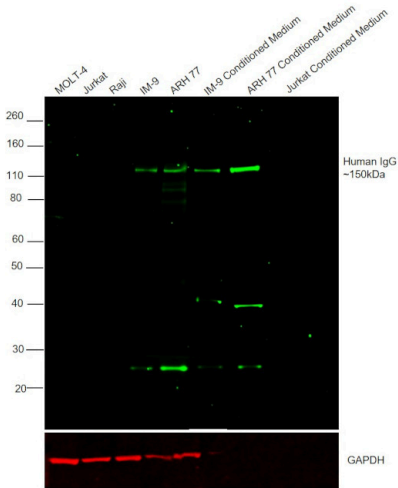
Human IgG (H+L) Cross-Adsorbed Secondary Antibody (A-21090)

Immunofluorescence analysis of Goat anti-Human IgG (H+L) Cross-Adsorbed Secondary Antibody, Alexa Fluor 568 (Product # A-21090) was performed using anti-Human MUC1 antibody (Product # MA5- 42157) with T-47D (positive) and Caco-2 (negative) cells. The cells were fixed with 4% Paraformaldehyde, permeabilized with 0.1% Triton X-100 and blocked with 2% BSA, then incubated with following primary antibodies at 1:100 dilution at 4 degree celsius overnight; Panel a & e- Ab2 (MUC1), Panel b & f- Ab1 (PFN1), Ab2 (MUC1), Ab3 (H3) and Panel c & g-: Ab1 (PFN1), Ab3 (H3). The cells were then incubated with secondary antibodies- Ab4 (Product # A32766), Ab5 (Product # A-21090) and Ab6 (Product # A32808) in 0.1% BSA at room temperature for 45 minutes. The images were captured at 40X magnification in CellInsight CX7 LZR High-Content Screening (HCS) Platform (Product # CX7A1110LZR) and externally deconvoluted (D.Sage et al./Methods 115 (2017) 28–41). Panel a shows plasma membrane localization of MUC1 in T-47D and its absence in Caco-2 (panel e), Panel b shows plasma membrane, cytoplasmic and nuclear localization of MUC1, PFN1 and H3 respectively in the channels corresponding to the wavelength of their secondary antibody. Panel c shows no signal in red channel proving the specificity of Ab4 to human primary antibody and not to mouse or rabbit primary antibody. Panel f & g show Caco-2 with PFN1 and H3 staining. Panel d & h are control cells with no primary antibody. {RE}



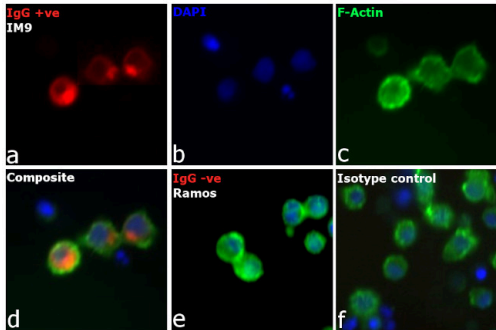
Human IgG (H+L) Cross-Adsorbed Secondary Antibody (A-21090)

Antibody specificity was demonstrated by detection of differential basal expression of IgG across cell lines owing to their inherent genetic constitution. Relative expression of Human IgG was observed in IM-9, ARH-77 and IM-9, ARH-77 conditioned medium (CM) but not in Raji, Jurkat, Molt-4 and Jurkat CM using Goat anti-Human IgG (H+L) Cross-Adsorbed Secondary Antibody, Alexa Fluor 568 (Product # A-21090) in Western Blot. IM-9 and ARH-77 express and secrete IgG whereas Raji is known to express IgM. MOLT-4 and Jurkat (T-cell lines) do not express immunoglobulins. (DOI:10.1002/eji.1830100305;10.3791/3573;10.1016/0022-1759(94)00286-6;PMID: 566614). {RE}



Human IgG (H+L) Cross-Adsorbed Secondary Antibody (A-21090) in ICC/IF

Immunofluorescence analysis of Goat anti-Human IgG (H+L) Cross-Adsorbed Secondary Antibody, Alexa Fluor 568 was performed using log phase IM9 cells (IgG producing B-cell line). The cells were fixed with 4% paraformaldehyde for 10 minutes, permeabilized with 0.1% Triton™ X-100 for 15 minutes and blocked with 2% BSA for 1 hour at room temperature. The cells were labeled with Goat anti-Human IgG (H+L) Cross-Adsorbed Secondary Antibody, Alexa Fluor 568 (Product # A-21090) at 1:250 dilution in 0.1% BSA, incubated at 4 degree celsius overnight (Panel a: red). Nuclei (Panel b: blue) were stained with Hoechst33342 (Product # H1399). F-actin (Panel c: green) was stained with Alexa Fluor™ 488 Phalloidin (Product # A12379, 1:300 dilution). Panel d represents the merged image showing cytoplasmic (plasma membrane and golgi-body like) localization. Panel e represents Ramos (IgM non-producing B-cell line) which is a negative model for IgG expression. Panel f represents control cells with isotype control antibody to assess background. The images were captured at 40X magnification in CellInsight CX7 LZR High-Content Screening (HCS) Platform (Product # CX7A1110LZR).



View more figures on thermofisher.cn

Protocol for iterative indirect immunofluorescence imaging in cultured cells, tissue sections, and metaphase chromosome spreads. STAR Protoc (2024)

An engineered human cardiac tissue model reveals contributions of systemic lupus erythematosus autoantibodies to myocardial injury. Nat Cardiovasc Res (2024)

Astrocytic stress response is induced by exposure to astrocyte-binding antibodies expressed by plasmablasts from pediatric patients with acute transverse myelitis. J Neuroinflammation (2024)

MFN2 coordinates mitochondria motility with α -tubulin acetylation and this regulation is disrupted in CMT2A. iScience (2024)

Topoisomerase I is an evolutionarily conserved key regulator for satellite DNA transcription. Nat Commun (2024)

For Research Use Only. Not for use in diagnostic procedures. Not for resale without express authorization. Products are warranted to operate or perform substantially in conformance with published Product specifications in effect at the time of sale, as set forth in the Production documentation, specifications and/or accompanying package inserts ("Documentation"). No claim of suitability for use in applications regulated by FDA is made. The warranty provided herein is valid only when used by properly trained individuals. Unless otherwise stated in the Documentation, this warranty is limited to one year from date of shipment when the Product is subjected to normal, proper and intended usage. This warranty does not extend to anyone other than the Buyer. Any model or sample furnished to Buyer is merely illustrative of the general type and quality of goods and does not represent that any Product will conform to such model or sample. NO OTHER WARRANTIES, EXPRESS OR IMPLIED, ARE GRANTED INCLUDING WITHOUT LIMITATION, IMPLIED WARRANTIES OF MERCHANTABILITY, FITNESS FOR ANY PARTICULAR PURPOSE, OR NON INFRINGEMENT. BUYER'S EXCLUSIVE REMEDY FOR NON-CONFORMING PRODUCTS DURING THE WARRANTY PERIOD IS LIMITED TO REPAIR, REPLACEMENT OF OR REFUND FOR THE NON-CONFORMING PRODUCT(S) AT SELLER'S SOLE OPTION. THERE IS NO OBLIGATION TO REPAIR, REPLACE OR REFUND FOR PRODUCTS AS THE RESULT OF (i) ACCIDENT, DISASTER OR EVENT OF FORCE MAJEURE, (ii) MISUSE, FAULT OR NEGLIGENCE OF OR BY BUYER, (iii) USE OF THE PRODUCTS IN A MANNER FOR WHICH THEY WERE NOT DESIGNED, OR (iv) IMPROPER STORAGE AND HANDLING OF THE PRODUCTS. Unless otherwise expressly stated on the Product or in the documentation accompanying the Product, the Product is intended for research only and is not to be used for any other purpose, including without limitation, unauthorized commercial uses, in vitro diagnostic uses, ex vivo or in vivo therapeutic uses, or any type of consumption by or application to human or animals.